

# VOR RWY 5

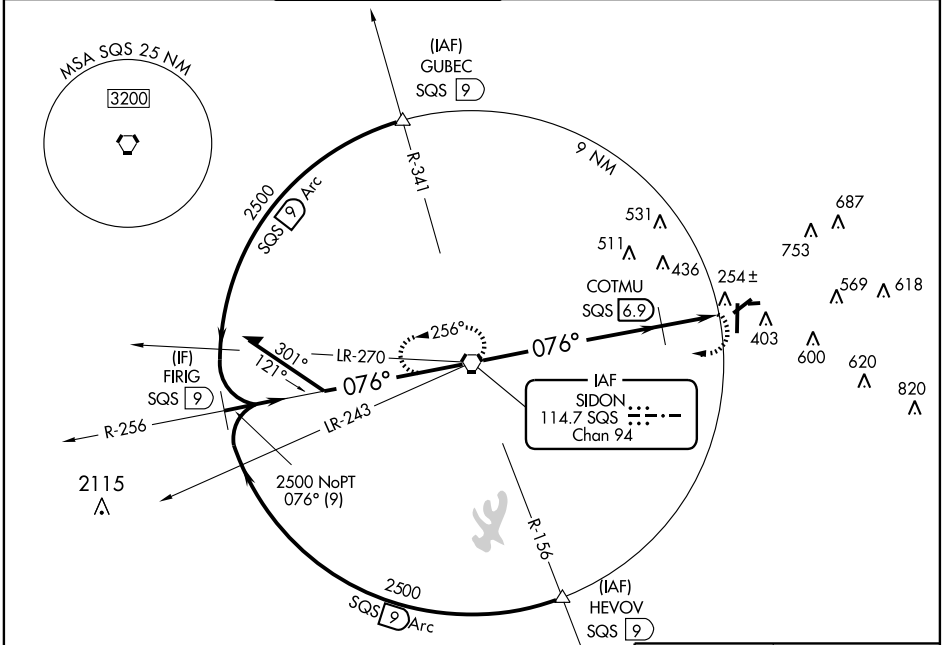
GREENWOOD-LEFLORE (GWO)

VORTAC SQS <b>114.7</b> Chan <b>94</b>	APP CRS <b>076°</b>	Rwy Idg TDZE <b>149</b> Apt Elev <b>162</b>	<b>5005</b>
--	------------------------	---	-------------

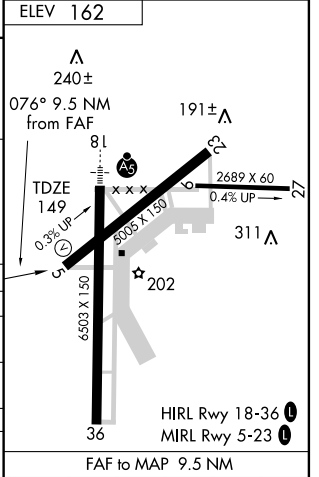
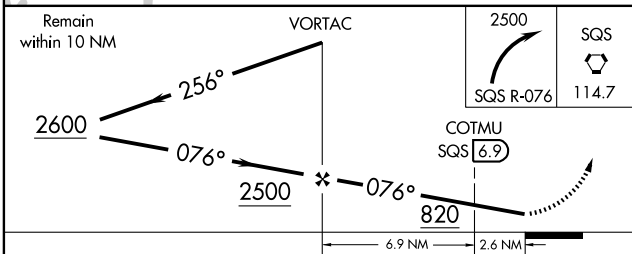
**▽**  
**▲**

MISSED APPROACH: Climbing right turn to 2500 via SQS R-076 to SQS VORTAC and hold.

ASOS <b>119.975</b>	MEMPHIS CENTER <b>132.5 259.1</b>	GREENWOOD TOWER* <b>118.35</b> (CTAF) <b>0 367.6</b>	GND CON <b>125.55 373.4</b>	CLNC DEL <b>125.55</b>	UNICOM <b>122.95</b>
------------------------	--------------------------------------	---	--------------------------------	---------------------------	-------------------------



Remain within 10 NM



CATEGORY	A	B	C	D
S-5	820-1	671 (700-1)	820-2 671 (700-2)	820-2 ¼ 671 (700-2¼)
CIRCLING	820-1	658 (700-1)	820-2 658 (700-2)	820-2 ¼ 658 (700-2¼)
COTMU FIX MINIMUMS				
S-5	600-1	451 (500-1)	600-1 ¼ 451 (500-1¼)	600-1 ½ 451 (500-1½)
CIRCLING	760-1	598 (600-1)	780-1 ¼ 618 (700-1¼)	780-2 618 (700-2)

FAF to MAP 9.5 NM					
Knots	60	90	120	150	180
Min:Sec	9:30	6:20	4:45	3:48	3:10

SC-4, 22 OCT 2009 to 19 NOV 2009

SC-4, 22 OCT 2009 to 19 NOV 2009