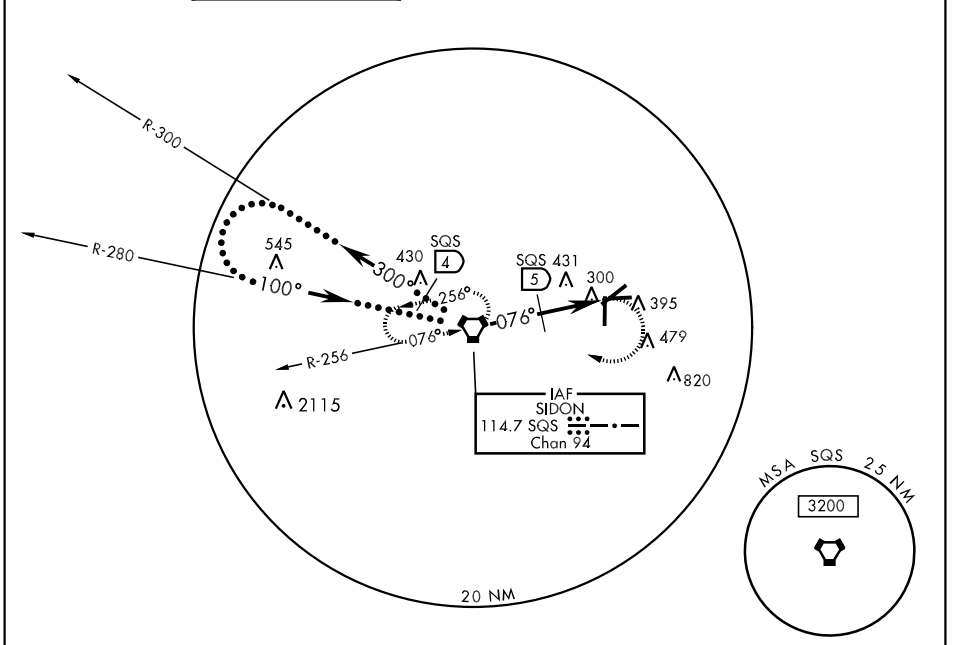


VORTAC SQS 114.7 Chan 94	APCH CRS 076°	Rwy Idg TDZE 5005 149 Arpt Elev 162	JAL-181 [USAF]	GREENWOOD-LEFLORE (GWO)
--------------------------------	------------------	--	----------------	-------------------------

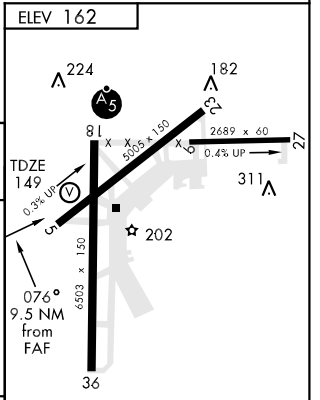
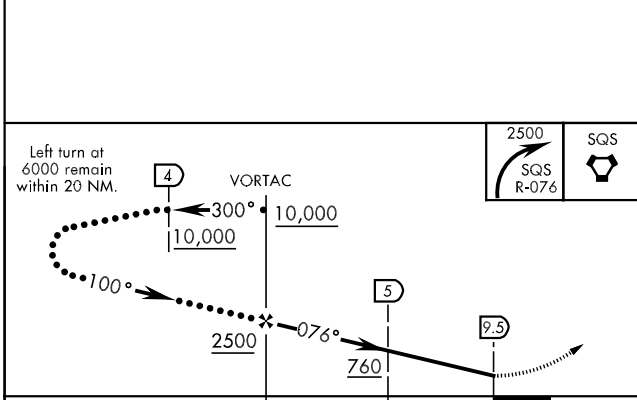
**V** MISSED APPROACH: Climbing right turn to 2500 via SQS R-076 to SQS VORTAC and hold.

MEMPHIS CENTER 132.5 259.1	GREENWOOD TOWER ★ 118.35 (CTAF) 0 367.6	GND CON 125.55 373.4	GREENWOOD RADIO 122.55	CLNC DEL 125.55
-------------------------------	--	-------------------------	---------------------------	--------------------



SC-4, 22 OCT 2009 to 19 NOV 2009

SC-4, 22 OCT 2009 to 19 NOV 2009



CATEGORY	C	D	E
S-5	600-1¼ 451 (500-1¼)	600-1½ 451 (500-1½)	1080-3 918 (1000-3)
CIRCLING	780-1¾ 618 (700-1¾)	780-2 618 (700-2)	1080-3 918 (1000-3)

HIRL Rwy 18-36	0
MIRL Rwy 5-23	0
FAF to MAP 9.5 NM	
Knots	120 140 160 180 200
Min:Sec	4:45 4:04 3:34 3:10 2:51