

WAAS CH <b>53413</b> <b>W01A</b>	APP CRS <b>006°</b>	Rwy Idg TDZE Apt Elev	<b>5393</b> <b>1015</b> <b>1048</b>
--	------------------------	-----------------------------	---

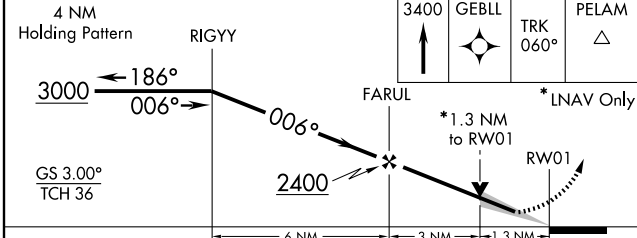
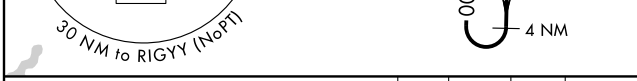
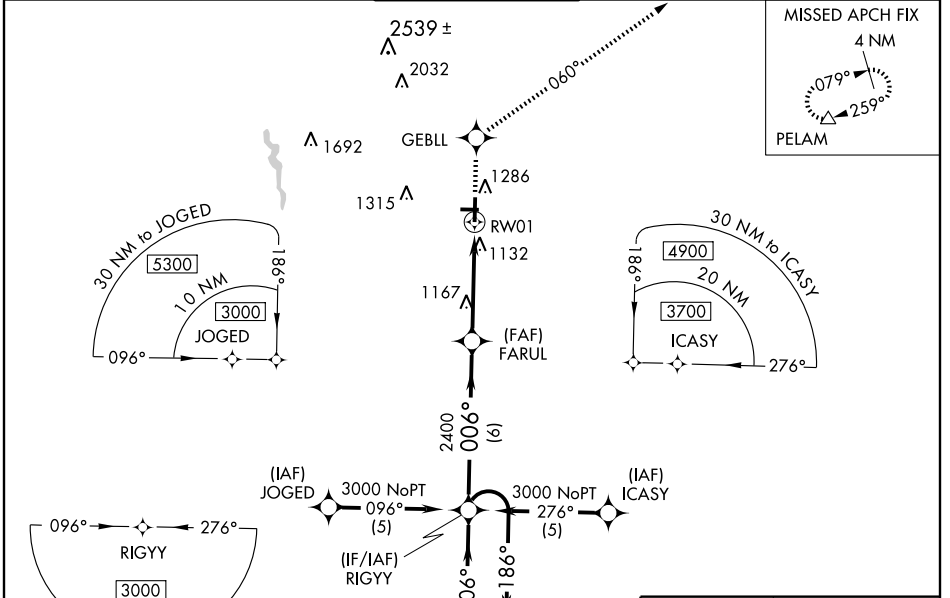
# RNAV (GPS) RWY 1

GREENVILLE DOWNTOWN (GMU)

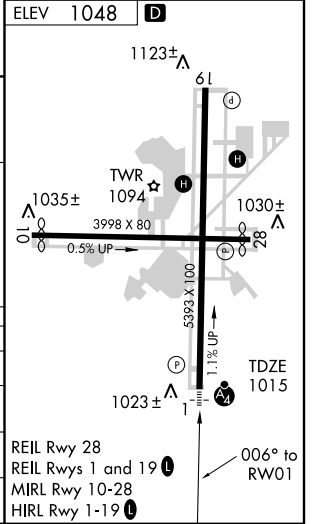
For uncompensated Baro-VNAV systems, LNAV/VNAV NA below -17°C (2°F) or above 46°C (114°F). DME/DME RNP-0.3 NA. Baro-VNAV and VDP NA when using Greer altimeter setting. When local altimeter setting not received, use Greer altimeter setting and increase all DA 29 feet and all MDA 40 feet, increase LPV and LNAV/VNAV all Cats, LNAV Cat D and Circling Cat C visibility ¼ mile. Inoperative table does not apply to LNAV/VNAV all Cats and LNAV Cat C.

**MALSIF**  
MISSED APPROACH:  
Climb to 3400 direct GEBLL and via track 060° to PELAM and hold.

<b>ASOS</b> 127.075	<b>GREER APP CON</b> 118.8 385.4	<b>GREENVILLE TOWER*</b> 119.9 (CTAF) 0 257.7	<b>GND CON</b> 121.25	<b>UNICOM</b> 122.95
------------------------	-------------------------------------	--	--------------------------	-------------------------



CATEGORY	A	B	C	D
LPV DA		1215-¾	200 (200-¾)	
LNAV/VNAV DA		1415-1½	400 (400-1½)	
LNAV MDA	1440-¾	425 (400-¾)	1440-1¼	425 (400-1¼)
CIRCLING	1620-1	572 (600-1)	1620-1½	1740-2¼



SE-2, 22 OCT 2009 to 19 NOV 2009

SE-2, 22 OCT 2009 to 19 NOV 2009