

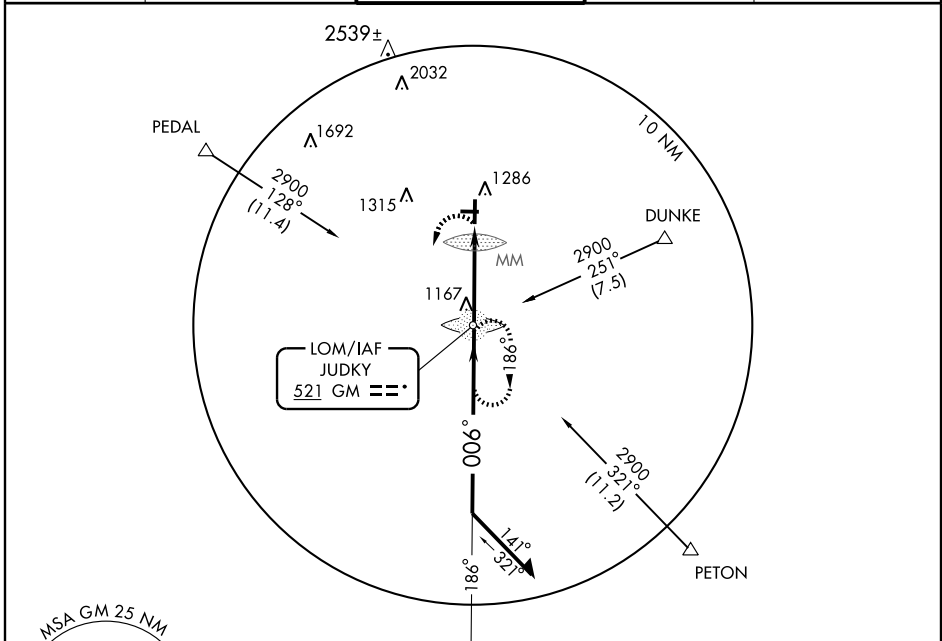
NDB RWY 1

GREENVILLE DOWNTOWN (GMU)

LOM GM 521	APP CRS 006°	Rwy Idg 5393
		TDZE 1015
		Apt Elev 1048

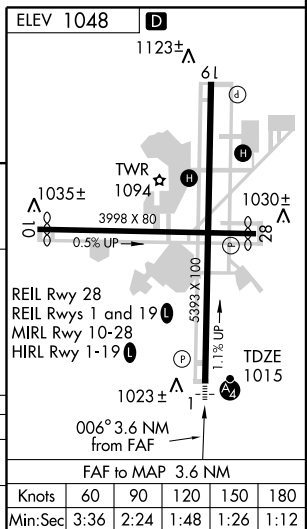
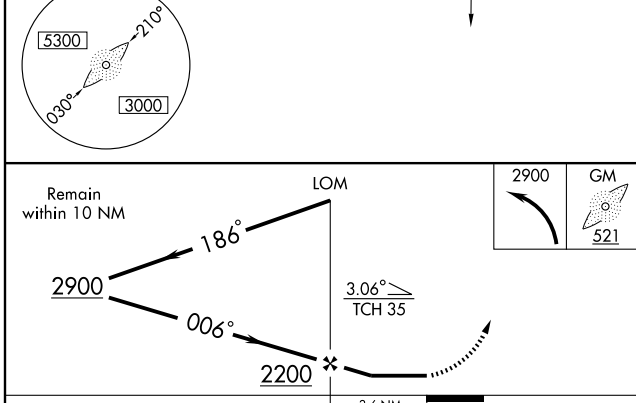
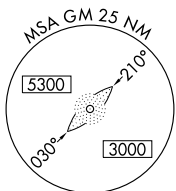
<p>NA Inoperative table does not apply to Cat C. If local altimeter setting not received, use Greer altimeter setting and increase all MDAs 40 feet.</p>	<p>MALSF</p>	<p>MISSED APPROACH: Climbing left turn to 2900 direct GM LOM and hold, continue climb-in-hold to 2900.</p>
---	---------------------	---

ASOS 127.075	GREER APP CON * 118.8 385.4	GREENVILLE TOWER * 119.9 (CTAF) 257.7	GND CON 121.25	UNICOM 122.95
------------------------	---------------------------------------	---	--------------------------	-------------------------



SE-2, 22 OCT 2009 to 19 NOV 2009

SE-2, 22 OCT 2009 to 19 NOV 2009



CATEGORY	A	B	C	D
S-1	1480-3/4 465 (500-3/4)		1480-1 1/4 465 (500-1 1/4)	1480-1 1/2 465 (500-1 1/2)
CIRCLING	1620-1 572 (600-1)		1620-1 1/2 572 (600-1 1/2)	1740-2 1/4 692 (700-2 1/4)

NDB RWY 1