

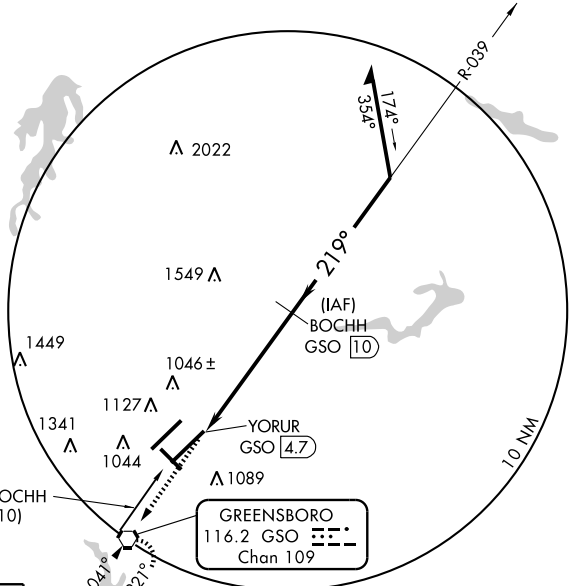
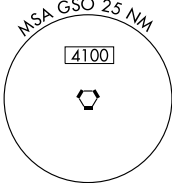
VORTAC GSO	APP CRS	Rwy Idg	9601
116.2	219°	TDZE	889
Chan 109		Apt Elev	925

# VOR/DME RWY 23L

GREENSBORO/PIEDMONT TRIAD INTL (GSO)

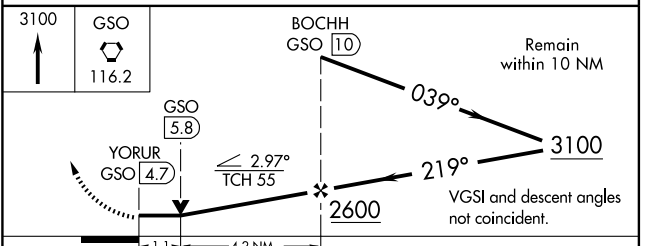
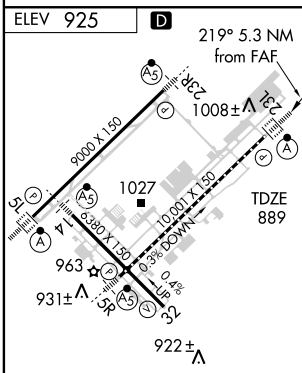
	For inoperative ALSF, increase S-23L Cat. D visibility to RVR 6000.	ALSF-2 	MISSED APPROACH: Climb to 3100 direct GSO VORTAC and hold, continue climb-in-hold to 3100.

ATIS <b>128.55</b>	GREENSBORO APP CON <b>124.35 269.225</b> (250° -049°) <b>118.5 327.075</b> (050° -249°)	GREENSBORO TOWER <b>119.1 290.325</b>	GND CON <b>121.9 348.6</b>	CLNC DEL <b>121.75</b>
-----------------------	-----------------------------------------------------------------------------------------------	------------------------------------------	-------------------------------	---------------------------



SE-2, 22 OCT 2009 to 19 NOV 2009

SE-2, 22 OCT 2009 to 19 NOV 2009



CATEGORY	A	B	C	D
S-23L	1300/24	411 (400-½)	1300/40 411 (400-¾)	1300/50 411 (400-1)
CIRCLING	1340-1 415 (500-1)	1440-1 515 (600-1)	1440-1½ 515 (600-1½)	1480-2 555 (600-2)