

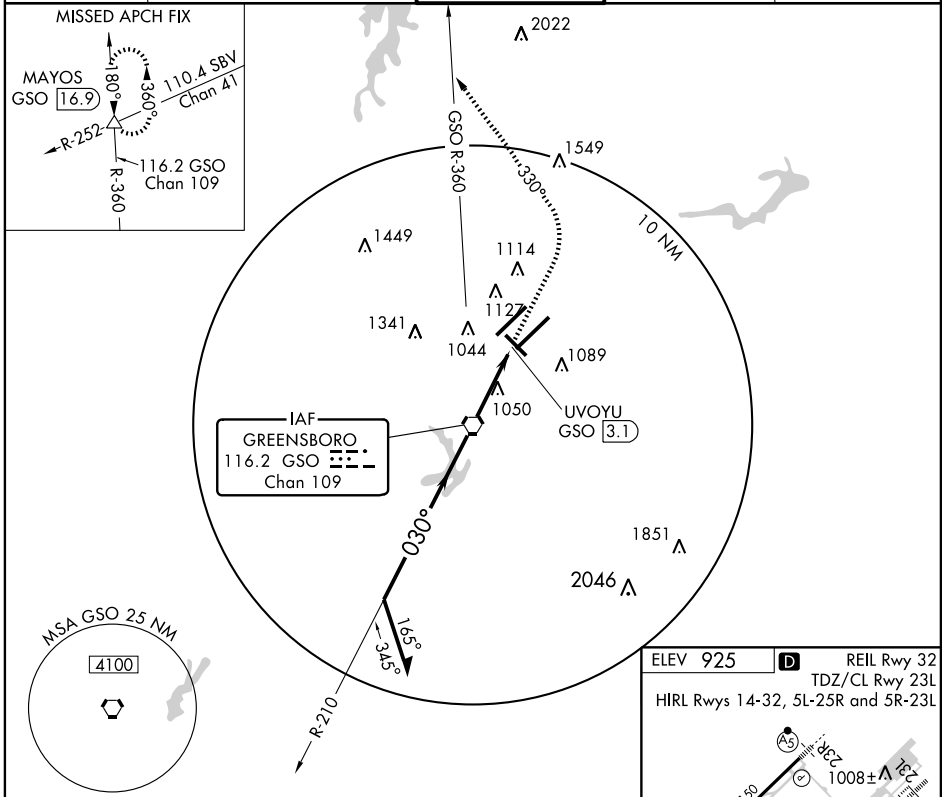
VORTAC GSO <b>116.2</b> Chan 109	APP CRS <b>030°</b>	Rwy Idg TDZE Apt Elev	<b>10001</b> <b>900</b> <b>925</b>
--	------------------------	-----------------------------	--

# VOR RWY 5R

GREENSBORO/PIEDMONT TRIAD INTL (GSO)

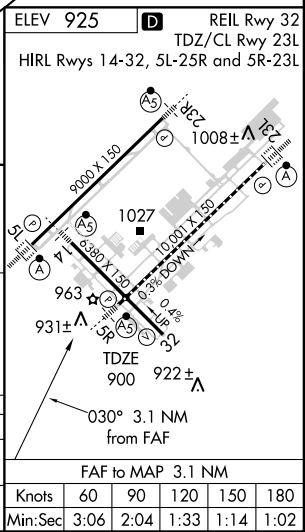
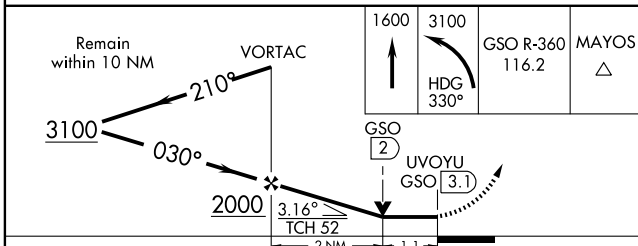
<p>Inoperative table does not apply to S-5R Cat. D.</p>	<p>MALSR</p>	<p>MISSED APPROACH: Climb to 1600 then climbing left turn to 3100 via heading 330° and GSO R-360 to MAYOS Int/GSO 16.9 DME and hold.</p>	
---	--------------	--	--

ATIS <b>128.55</b>	GREENSBORO APP CON <b>124.35 269.225</b> (250° -049°) <b>118.5 327.075</b> (050° -249°)	GREENSBORO TOWER <b>119.1 290.325</b>	GND CON <b>121.9 348.6</b>	CINC DEL <b>121.75</b>
-----------------------	---	--	-------------------------------	---------------------------



SE-2, 22 OCT 2009 to 19 NOV 2009

SE-2, 22 OCT 2009 to 19 NOV 2009



CATEGORY	A	B	C	D
S-5R	1300/24 400 (400-1/2)			1300/60 400 (400-1/4)
CIRCLING	1340-1 415 (500-1)	1440-1 515 (600-1)	1440-1 1/2 515 (600-1 1/2)	1480-2 555 (600-2)

FAF to MAP 3.1 NM	Knots	60	90	120	150	180
	Min:Sec	3:06	2:04	1:33	1:14	1:02