


# RNAV (GPS) RWY 14

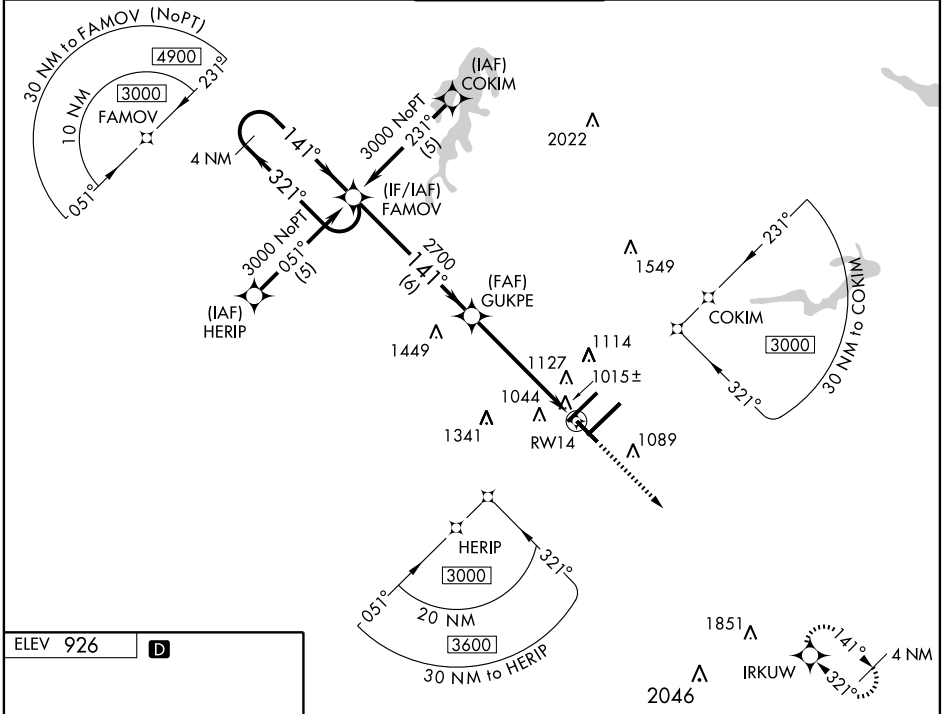
GREENSBORO/ PIEDMONT TRIAD INTL (GSO)

APP CRS	Rwy Idg	<b>6380</b>
<b>141°</b>	TDZE	<b>926</b>
	Apt Elev	<b>926</b>

**V** Baro-VNAV NA below -16°C (4°F). Baro-VNAV NA when using Winston-Salem altimeter setting. DME/DME RNP-0.3 NA.  
**A** If local altimeter setting not received, use Winston-Salem altimeter setting and increase all DAs/MDAs 40 feet.

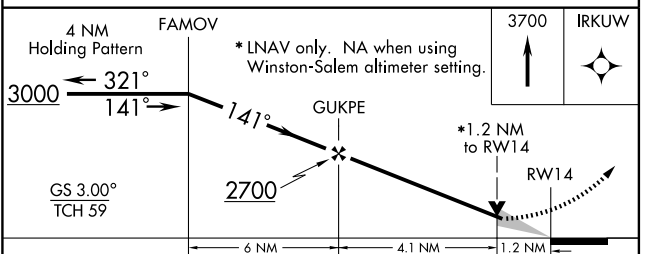
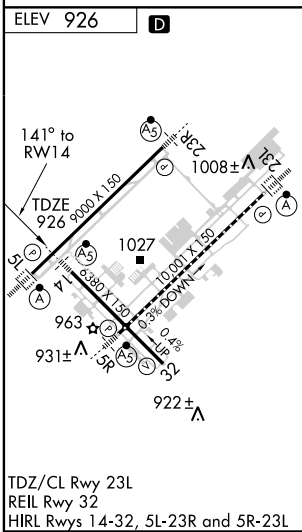
MALSR   
 MISSED APPROACH: Climb to 3700 direct IRKUW and hold.

ATIS <b>128.55</b>	GREENSBORO APP CON <b>124.35 269.225</b> (250°-049°) <b>118.5 327.075</b> (050°-249°)	GREENSBORO TOWER <b>119.1 290.325</b>	GND CON <b>121.9 348.6</b>	CLNC DEL <b>121.75</b>
-----------------------	---	--	-------------------------------	---------------------------



SE-2, 22 OCT 2009 to 19 NOV 2009

SE-2, 22 OCT 2009 to 19 NOV 2009



CATEGORY	A	B	C	D
LPV DA	NA			
LNAV/VNAV DA	1320/40 394 (400-¾)			
LNAV MDA	1360/24	434 (500-½)	1360/40 434 (500-¾)	1360/50 434 (500-1)
CIRCLING	1360-1¼ 434 (500-1¼)	1440-1¼ 514 (600-1¼)	1440-1½ 514 (600-1½)	1480-2 554 (600-2)