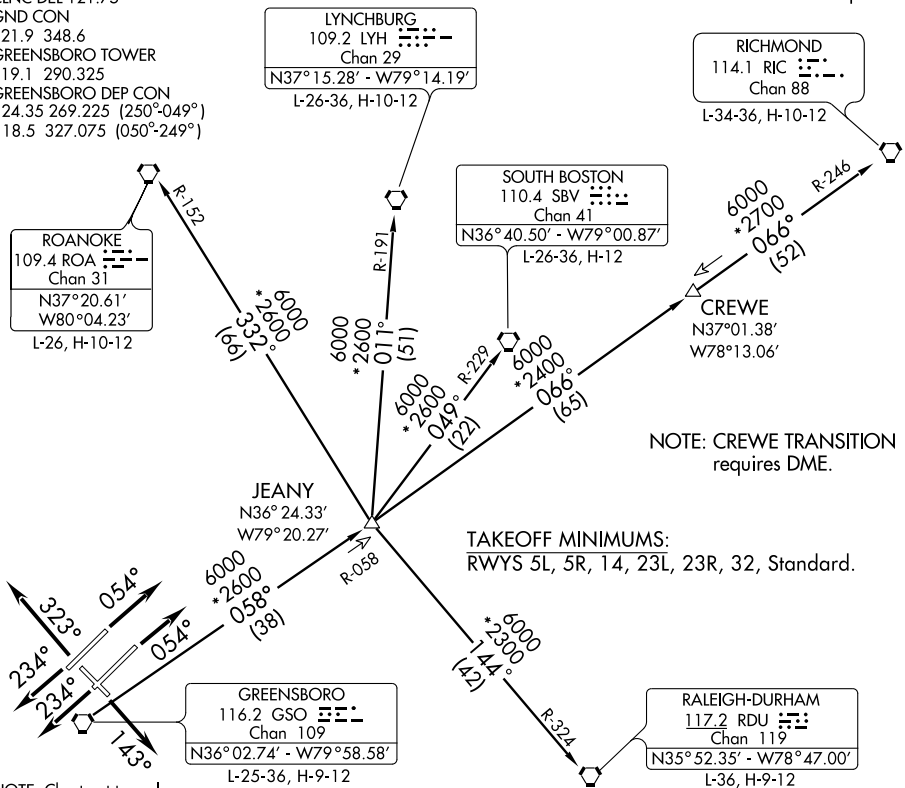


QUAKER THREE DEPARTURE

ATIS 128.55
 CLNC DEL 121.75
 GND CON
 121.9 348.6
 GREENSBORO TOWER
 119.1 290.325
 GREENSBORO DEP CON
 124.35 269.225 (250°-049°)
 118.5 327.075 (050°-249°)

NOTE: Radar required.



NOTE: CREWE TRANSITION requires DME.

TAKEOFF MINIMUMS:
 RWYS 5L, 5R, 14, 23L, 23R, 32, Standard.

NOTE: Chart not to scale.

SE-2, 22 OCT 2009 to 19 NOV 2009

SE-2, 22 OCT 2009 to 19 NOV 2009

DEPARTURE ROUTE DESCRIPTION

- TAKEOFF RWY 5R: Climb heading 054°. Thence....
- TAKEOFF RWY 5L: Climb heading 054°. Thence....
- TAKEOFF RWY 14: Climb heading 143°. Thence....
- TAKEOFF RWY 23L: Climb heading 234°. Thence....
- TAKEOFF RWY 23R: Climb heading 234°. Thence....
- TAKEOFF RWY 32: Climb heading 323°. Thence....

TURBOJETS: Maintain 4000. TURBOPROP/PROP: Maintain 2500 or assigned altitude.

... Expect vector to intercept assigned radial associated with issued transition. Proceed via the depicted radial to the transition fix then as filed. If no transition assigned, expect vector to appropriate fix. Expect filed altitude/flight level ten minutes after departure.