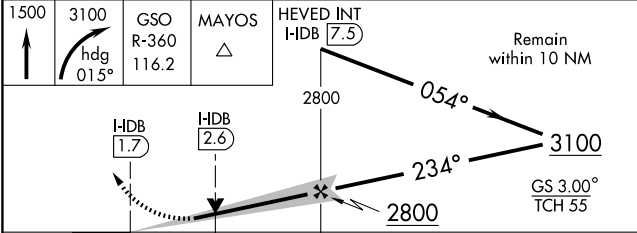
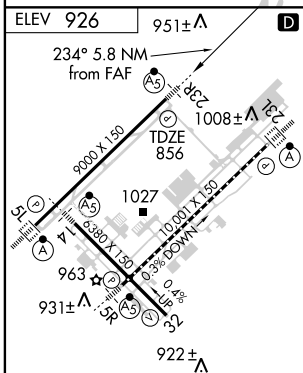
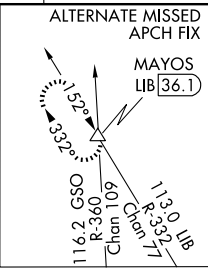
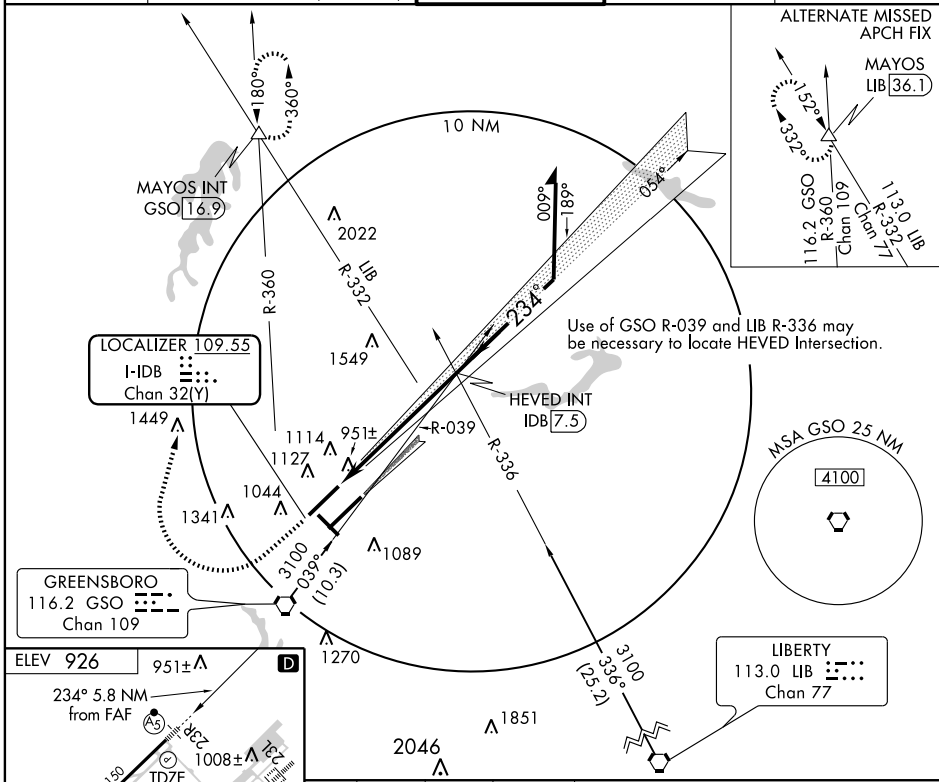


LOC/DME I-HDB	APP CRS	Rwy Idg TDZE	<b>9000</b>
<b>109.55</b>	<b>234°</b>	Apt Elev	<b>856</b>
Chan 32Y			<b>926</b>

# ILS or LOC RWY 23R

GREENSBORO/PIEDMONT TRIAD INTL (GSO)

<b>ATIS</b> <b>128.55</b>		GREENSBORO APP CON <b>124.35 269.225</b> (250°-049°) <b>118.5 327.075</b> (050°-249°)	<b>GREENSBORO TOWER</b> <b>119.1 290.325</b>	<b>GND CON</b> <b>121.9 348.6</b>	<b>CLNC DEL</b> <b>121.75</b>
		<b>MALSRL</b> MISSED APPROACH: Climb to 1500 then climbing right turn to 3100 via heading 015° and GSO VORTAC R-360 to MAYOS INT/GSO 16.9 DME and hold.			



TDZ/CL Rwy 23L  
 REIL Rwy 32  
 HIRL Rwys 14-32, 5R-23L and 5L-23R

FAF to MAP 5.8 NM

Knots	60	90	120	150	180
Min:Sec	5:48	3:52	2:54	2:19	1:56

CATEGORY	A	B	C	D
S-ILS 23R	1056/24 200 (200-½)			
S-LOC 23R	1220/24 364 (300-½)			1220/40 364 (300-¾)
CIRCLING	1440-1	514 (600-1)	1440-1½ 514 (600-1½)	1480-2 554 (700-2)

SE-2, 22 OCT 2009 to 19 NOV 2009

SE-2, 22 OCT 2009 to 19 NOV 2009