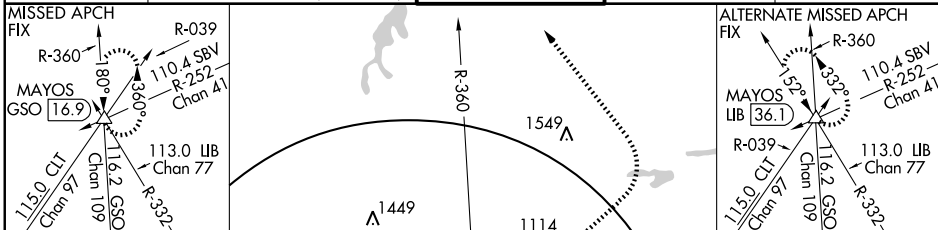


LOC/DME I-LLG 109.55 Chan 32(Y)	APP CRS 054°	Rwy Idg TDZE Apt Elev	9000 917 926
--	------------------------	-----------------------------	---

ILS RWY 5L (CAT III)
GREENSBORO/PIEDMONT TRIAD INTL (GSO)

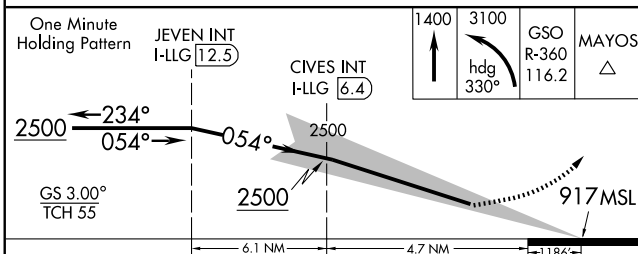
ATIS 128.55	GREENSBORO APP CON 124.35 269.225 (250°-049°) 118.5 327.075 (050°-249°)	GREENSBORO TOWER 119.1 290.325	GND CON 121.9 348.6	CLNC DEL 121.75
-----------------------	---	--	-------------------------------	---------------------------

MISSED APPROACH FIX		ALS-F-2 MISSED APPROACH: Climb to 1400 then climbing left turn to 3100 via heading 330° and GSO VORTAC R-360 to MAYOS INT/GSO 16.9 DME and hold.		
---------------------	--	---	--	--

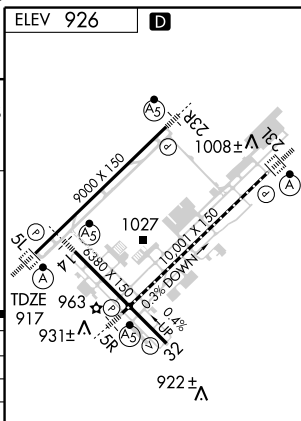


Use of GSO R-241 and LIB R-295 may be necessary to locate JEVEN Intersection.

DME or RADAR required for procedure entry at LIB VORTAC.



One Minute Holding Pattern	JEVEN INT I-LLG 12.5	CIVES INT I-LLG 6.4	1400	3100	GSO R-360 116.2	MAYOS
GS 3.00° TCH 55	2500	2500	2500	917 MSL		
	6.1 NM	4.7 NM	1186'			
CATEGORY	A	B	C	D		
S-ILS-05L			CAT IIIa	RVR 07		
S-ILS-05L			CAT IIIb	RVR 06		
S-ILS-05L			CAT IIIc	NA		



CATEGORY III ILS - SPECIAL AIRCREW & AIRCRAFT CERTIFICATION REQUIRED

TDZ/CL Rwy 23L
REIL Rwy 32
HIRL Rwy 14-32, 5R-23L and 5L-23R