

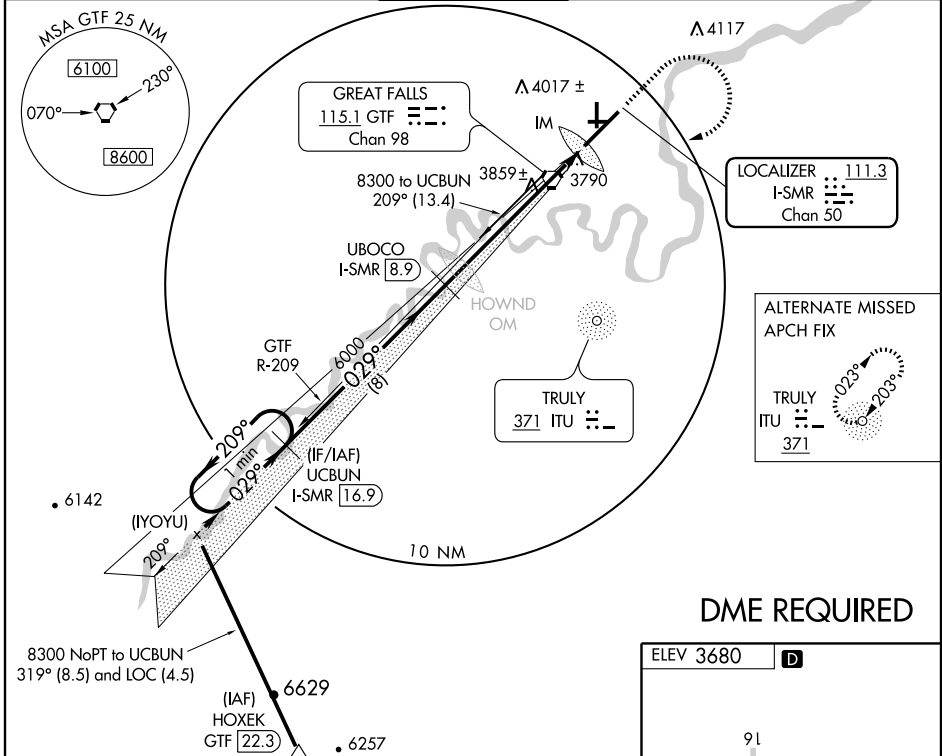
LOC/DME I-SMR 111.3 Chan 50	APP CRS 029°	Rwy Idg 10502 TDZE 3680 Apt Elev 3680
--	------------------------	--

ILS or LOC/DME RWY 3

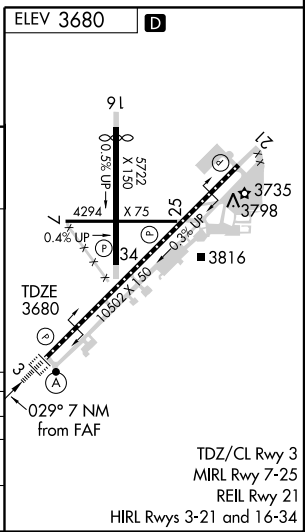
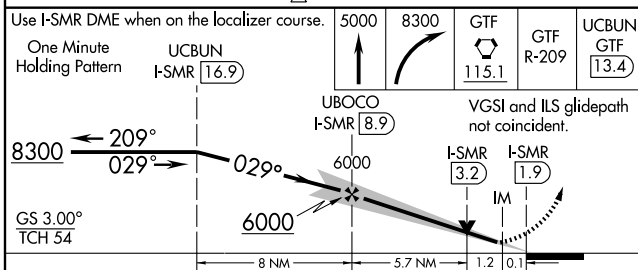
GREAT FALLS INTL (GTF)

ALSIF-2 	MISSED APPROACH: Climb to 5000 then climbing right turn to 8300 direct GTF VORTAC then via GTF VORTAC R-209 to UCBUN/GTF VORTAC 13.4 DME and hold.
-------------	--

ATIS 126.6 269.0	GREAT FALLS APP CON 128.6 259.1	GREAT FALLS TOWER 118.7 282.2	GND CON 121.7 348.6	CLNC DEL 121.7 348.6
----------------------------	---	---	-------------------------------	--------------------------------



DME REQUIRED



CATEGORY	A	B	C	D
S-ILS 3	3880/18		200 (200-½)	
S-LOC 3	4160/24	480 (500-½)	4160/40 480 (500-¾)	4160/50 480 (500-1)
CIRCLING	4160-1	480 (500-1)	4160-1½ 480 (500-1½)	4240-2 560 (600-2)

NW-1, 22 OCT 2009 to 19 NOV 2009

NW-1, 22 OCT 2009 to 19 NOV 2009