

GREAT FALLS, MONTANA

AL-177 (FAA)

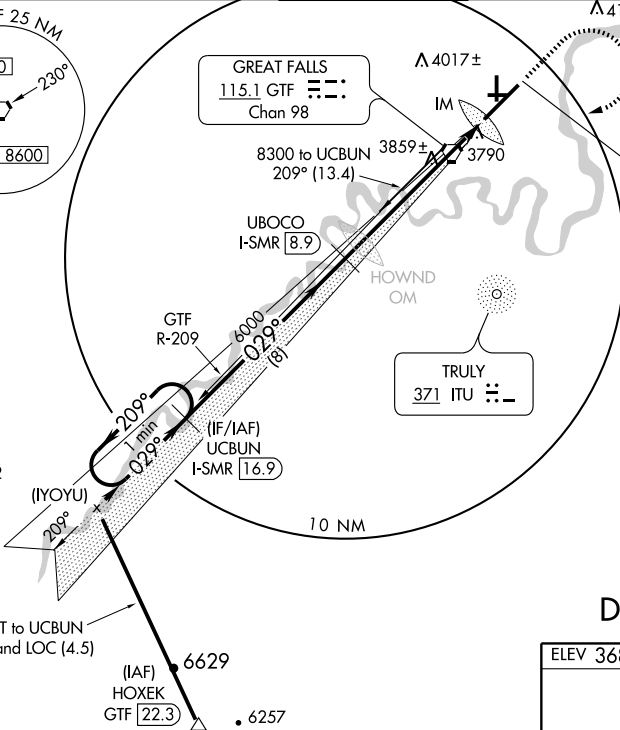
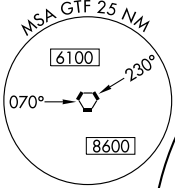
ILS RWY 3 (CAT III)
GREAT FALLS INTL (GTF)

LOC/DME I-SMR 111.3 Chan 50	APP CRS 029°	Rwy Idg TDZE Apt Elev	10502 3680 3680
--	------------------------	-----------------------------	--

ALSF-2

MISSED APPROACH: Climb to 5000 then climbing right turn to 8300 direct GTF VORTAC then via GTF VORTAC R-209 to UCBUN/GTF VORTAC 13.4 DME and hold.

ATIS 126.6 269.0	GREAT FALLS APP CON 128.6 259.1	GREAT FALLS TOWER 118.7 282.2	GND CON 121.7 348.6	CLNC DEL 121.7 348.6
----------------------------	---	---	-------------------------------	--------------------------------



LOCALIZER **111.3**
I-SMR
Chan 50

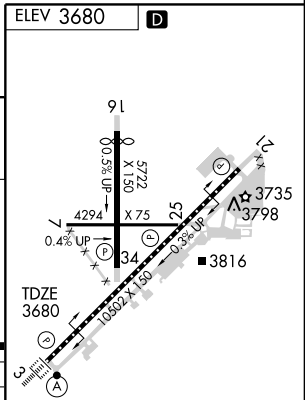
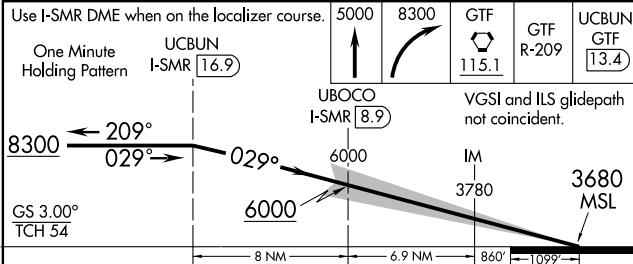
ALTERNATE MISSED APCH FIX

TRULY
ITU **371**

NW-1, 22 OCT 2009 to 19 NOV 2009

NW-1, 22 OCT 2009 to 19 NOV 2009

DME REQUIRED



Use I-SMR DME when on the localizer course.	5000	8300	GTF 115.1	GTF R-209	UCBUN GTF 13.4
One Minute Holding Pattern	UCBUN I-SMR 16.9	UBOCO I-SMR 8.9	VGS1 and ILS glidepath not coincident.		
8300 ← 209°	← 029°	029° →	6000	IM 3780	3680 MSL
GS 3.00° TCH 54	8 NM	6.9 NM	860'	10.9 NM	
CATEGORY	A	B	C	D	
S-ILS 3		CAT IIIa	RVR 07		
S-ILS 3		CAT IIIb	RVR 06		
S-ILS 3		CAT IIIc	NA		
CATEGORY III ILS - SPECIAL AIRCREW & AIRCRAFT CERTIFICATION REQUIRED					

TDZ/CL Rwy 3
MIRL Rwy 7-25
REIL Rwy 21
HIRL Rwsy 3-21 and 16-34

GREAT FALLS, MONTANA
Amdt 4 08325

47°29'N-111°22'W

GREAT FALLS INTL (GTF)
ILS RWY 3 (CAT III)