

GREAT FALLS, MONTANA

AL-177 (FAA)

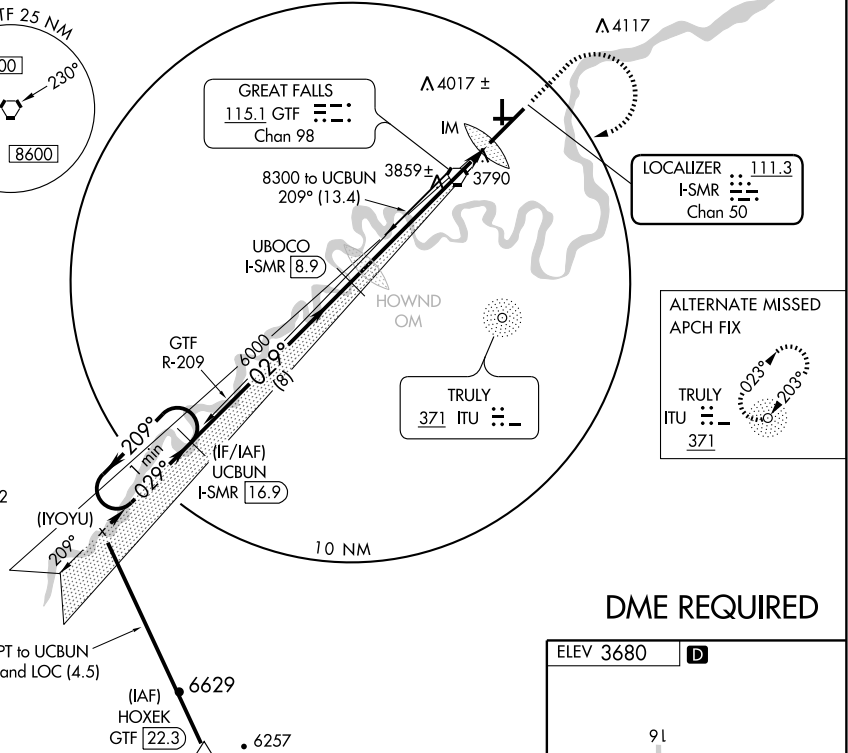
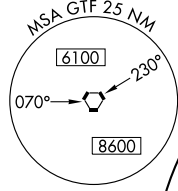
ILS RWY 3 (CAT II) GREAT FALLS INTL (GTF)

LOC/DME I-SMR 111.3 Chan 50	APP CRS 029°	Rwy Idg TDZE 3680 Apt Elev 3680
--	------------------------	---



MISSED APPROACH: Climb to 5000 then climbing right turn to 8300 direct GTF VORTAC then via GTF VORTAC R-209 to UCBUN/GTF VORTAC 13.4 DME and hold.

ATIS 126.6 269.0	GREAT FALLS APP CON 128.6 259.1	GREAT FALLS TOWER 118.7 282.2	GND CON 121.7 348.6	CLNC DEL 121.7 348.6
----------------------------	---	---	-------------------------------	--------------------------------

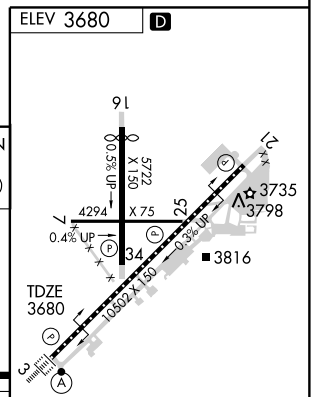


LOCALIZER **111.3**
I-SMR
Chan 50

ALTERNATE MISSED APCH FIX

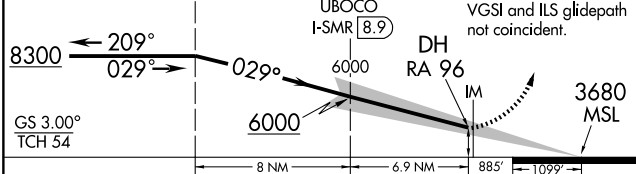
TRULY **371** ITU **371**
023°
203°

DME REQUIRED



Use I-SMR DME when on the localizer course.

One Minute Holding Pattern	UBUN I-SMR 16.9	5000	8300	GTF 115.1	GTF R-209	UCBUN GTF 13.4
----------------------------	------------------------	------	------	------------------	-----------	-----------------------



CATEGORY	A	B	C	D
S-ILS 3	3780/12 100 RA 96			

CATEGORY II ILS - SPECIAL AIRCREW & AIRCRAFT CERTIFICATION REQUIRED

TDZ/CL Rwy 3
MIRL Rwy 7-25
REIL Rwy 21
HIRL Rwsy 3-21 and 16-34

NW-1, 22 OCT 2009 to 19 NOV 2009

NW-1, 22 OCT 2009 to 19 NOV 2009

GREAT FALLS, MONTANA
Amdt 4 08325

47°29'N-111°22'W

GREAT FALLS INTL (GTF)
ILS RWY 3 (CAT II)