

# RNAV (GPS) RWY 35

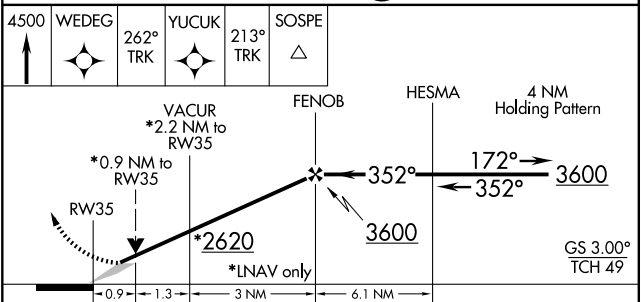
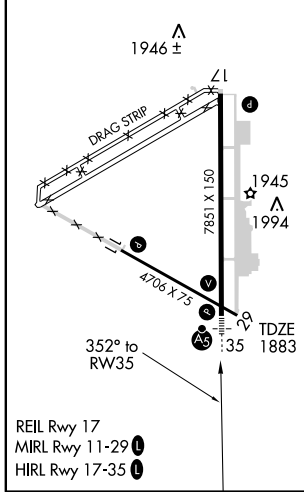
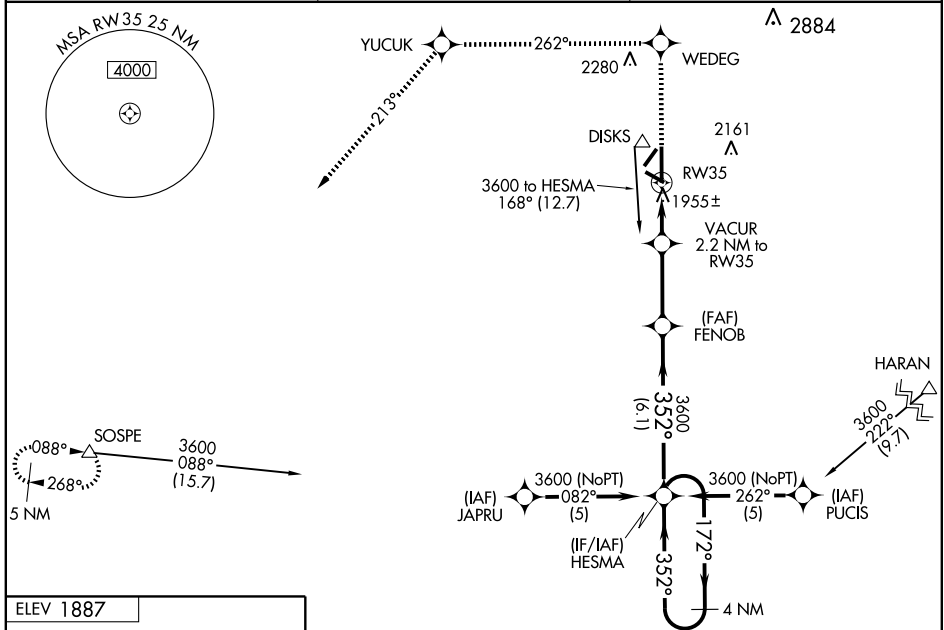
GREAT BEND MUNI (G.B.D)

WAAS CH <b>65710</b> <b>W35A</b>	APP CRS <b>352°</b>	Rwy Idg TDZE <b>1883</b> Apt Elev <b>1887</b>
--	------------------------	---

▼ For uncompensated Baro-VNAV systems, LNAV/VNAV NA below -18°C (0.0°F) or above 45°C (113°F). DME/DME RNP-0.3 NA. When local altimeter setting not received, use Russell Muni altimeter setting and increase all DA 77 feet and all MDA 80 feet. Increase LPV and LNAV/VNAV all Cats, LNAV Cat C and circling Cat D visibility ¼ mile. For inoperative MALSRS increase LPV all Cats and LNAV Cat D visibility to 1/4 mile. For inoperative MALSRS when using Russell Muni altimeter setting increase LPV all Cats and LNAV Cat D visibility to 1/4 mile. Baro-VNAV and VDP NA when using Russell Muni altimeter setting. Inoperative table does not apply to LNAV Cat D.

MALSRS  
MISSED APPROACH: Climb to 4500 direct WEDEG and via 262° track to YUCUK then via 213° track to SOSPE and hold.

AWOS-3 <b>119.275</b>	KANSAS CITY CENTER <b>118.8 337.4</b>	UNICOM <b>122.8 (CTAF)</b>
--------------------------	--	-------------------------------



CATEGORY	A	B	C	D
LPV DA		2171-1/2	288 (300-1/2)	
LNAV/VNAV DA		2222-3/4	339 (400-3/4)	
LNAV MDA	2200-1/2	337 (400-1/2)		2220-1 337 (400-1)
CIRCLING	2300-1 413 (500-1)	2340-1 453 (500-1)	2340-1 1/2 453 (500-1 1/2)	2500-2 613 (700-2)

NC-2, 22 OCT 2009 to 19 NOV 2009

NC-2, 22 OCT 2009 to 19 NOV 2009