

VOR/DME RWY 35

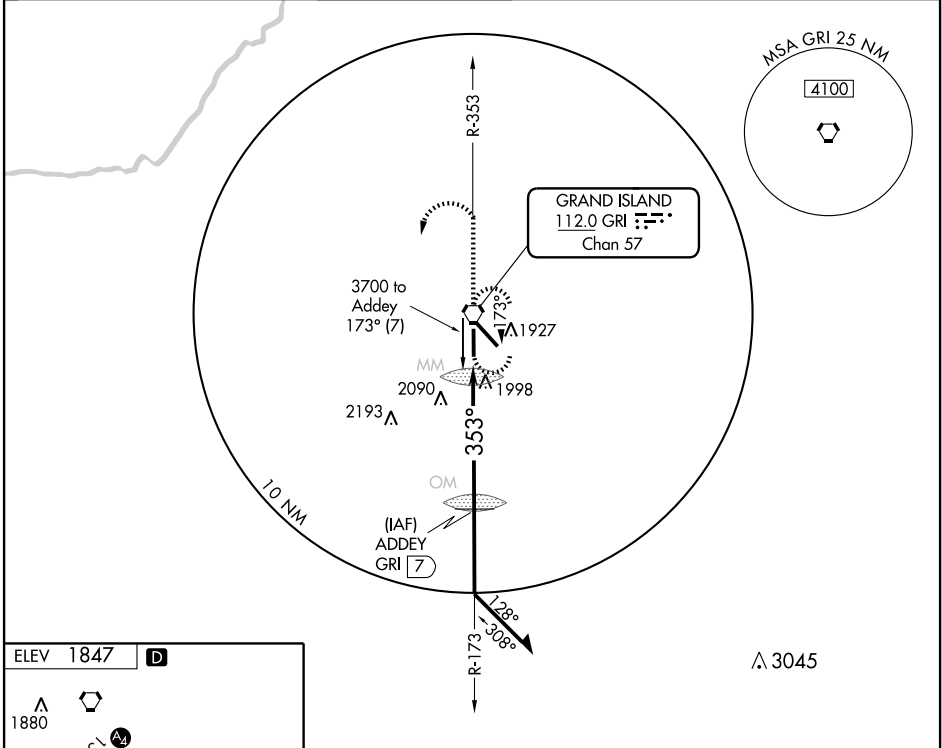
GRAND ISLAND/CENTRAL NEBRASKA RGNL (GRI)

VORTAC GRI 112.0 Chan 57	APP CRS 353°	Rwy Idg 7002 TDZE 1847 Apt Elev 1847
--	------------------------	---



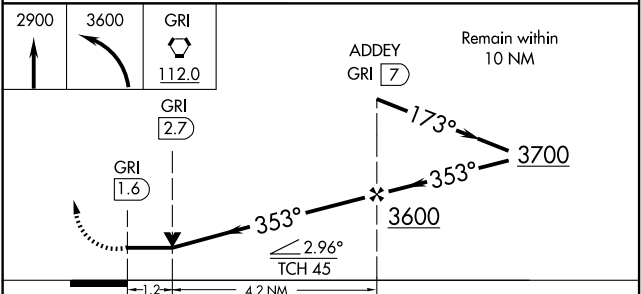
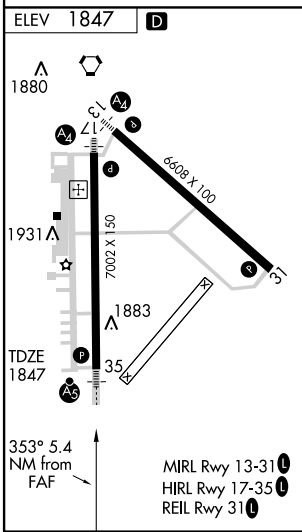
MISSED APPROACH: Climb to 2900, then climbing left turn to 3600 direct GRI VORTAC and hold.

ATIS 127.4	MINNEAPOLIS CENTER 119.4 278.8	GRAND ISLAND TOWER* 118.2 (CTAF) 0 388.2	GND CON 121.9 388.2	CLNC DEL 121.9 126.05 (when tower closed)	UNICOM 122.95
----------------------	--	--	-------------------------------	---	-------------------------



NC-2, 22 OCT 2009 to 19 NOV 2009

NC-2, 22 OCT 2009 to 19 NOV 2009



CATEGORY	A	B	C	D
S-35	2260-1/2 413 (500-1/2)		2260-3/4 413 (500-3/4)	2260-1 413 (500-1)
CIRCLING	2300-1 453 (500-1)		2300-1 1/2 453 (500-1 1/2)	2400-2 553 (600-2)