

VORTAC GRI 112.0 Chan 57	APP CRS 313°	Rwy Idg 6608 TDZE 1844 Apt Elev 1847
---------------------------------------	------------------------	---

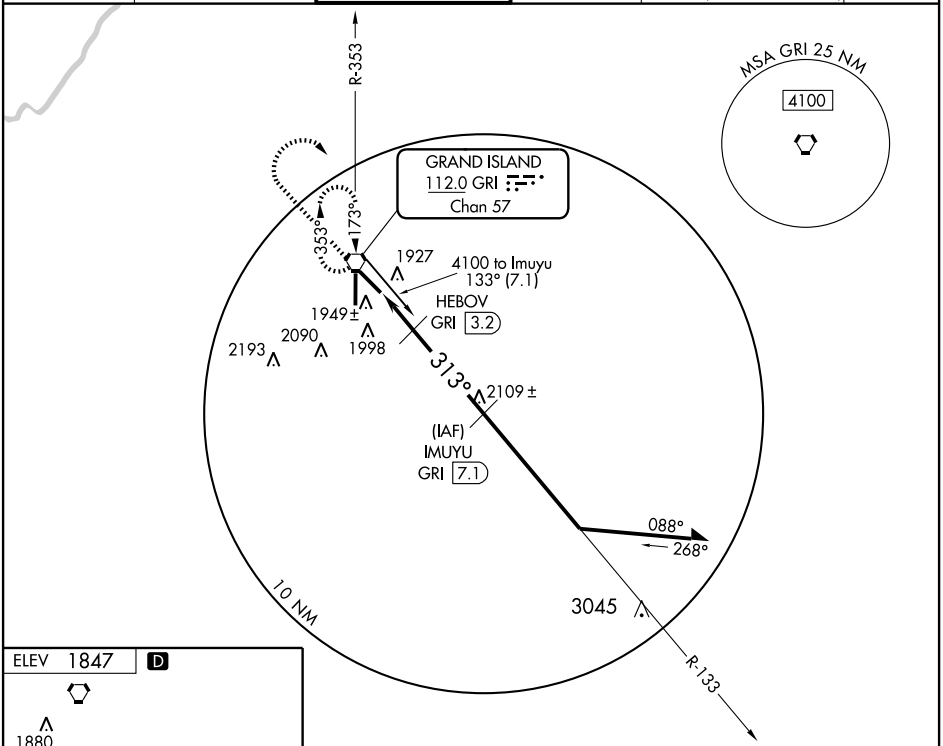
VOR/DME RWY 31

GRAND ISLAND/ CENTRAL NEBRASKA RGNL (GRI)

▼ If local altimeter setting not received, use Aurora altimeter setting and increase all MDAs 60 feet.
 ▲ VDP NA when using Aurora altimeter setting.

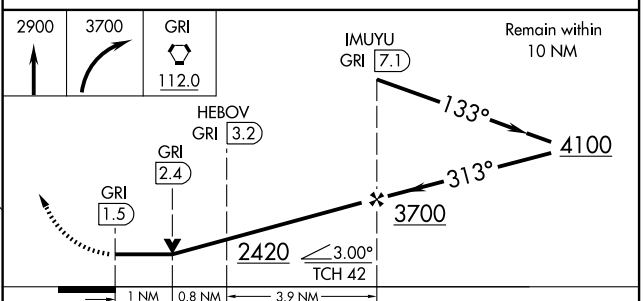
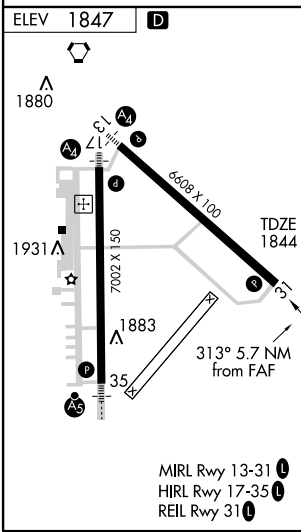
MISSED APPROACH: Climb to 2900 then climbing right turn to 3700 direct GRI VORTAC and hold.

ATIS 127.4	MINNEAPOLIS CENTER 119.4 278.8	GRAND ISLAND TOWER * 118.2 (CTAF) 0 388.2	GND CON 121.9 388.2	CLNC DEL 121.9 126.05 (when tower closed)	UNICOM 122.95
----------------------	--	---	-------------------------------	---	-------------------------



NC-2, 22 OCT 2009 to 19 NOV 2009

NC-2, 22 OCT 2009 to 19 NOV 2009



CATEGORY	A	B	C	D
S-31	2200-1	356 (400-1)	2200-1¼	2200-1¼ 356 (400-1¼)
CIRCLING	2300-1	453 (500-1)	2300-1½ 453 (500-1½)	2400-2 553 (600-2)