

GRAND ISLAND, NEBRASKA

AL-173 (FAA)

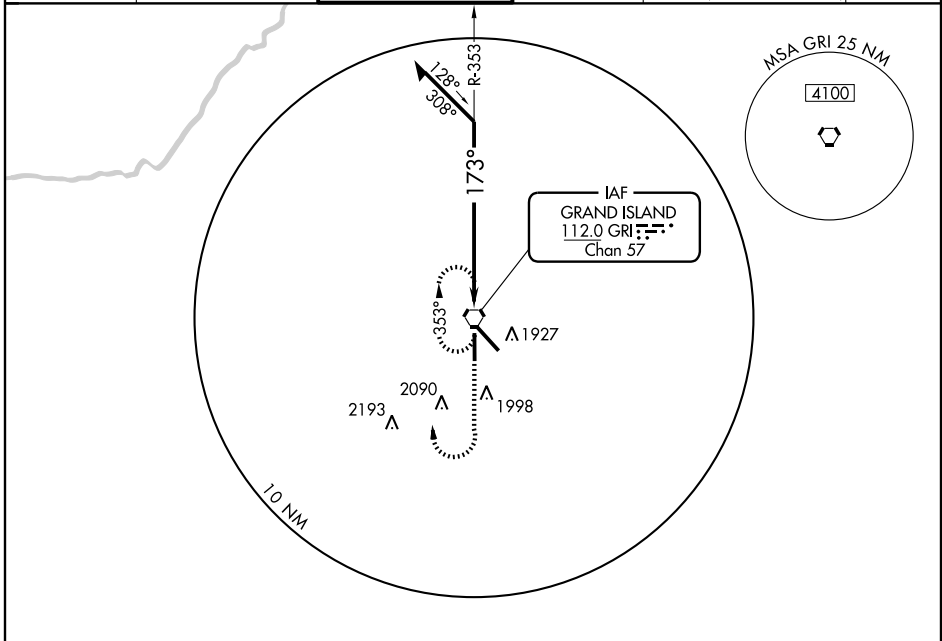
VORTAC GRI 112.0 Chan 57	APP CRS 173°	Rwy Idg TDZE 1844 Apt Elev 1847	7002
---------------------------------------	------------------------	---	-------------

VOR RWY 17

GRAND ISLAND/ CENTRAL NEBRASKA RGNL (GRI)

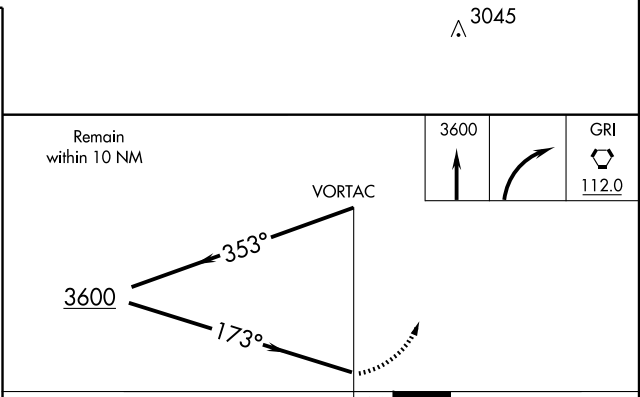
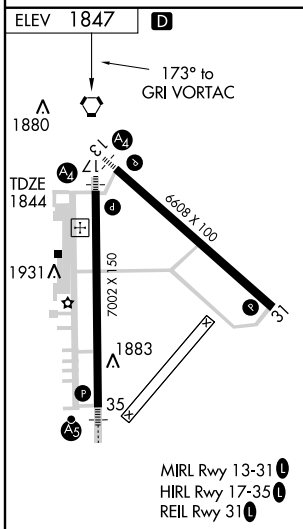
Inoperative table does not apply to S-17 Cat C.		MALS 	MISSED APPROACH: Climb to 3600, then right turn direct GRI VORTAC and hold.		
---	--	----------	---	--	--

ATIS 127.4	MINNEAPOLIS CENTER 119.4 278.8	GRAND ISLAND TOWER * 118.2 (CTAF) 388.2	GND CON 121.9 388.2	CLNC DEL 121.9 126.05 (when tower closed)	UNICOM 122.95
----------------------	--	---	-------------------------------	---	-------------------------



NC-2, 22 OCT 2009 to 19 NOV 2009

NC-2, 22 OCT 2009 to 19 NOV 2009



CATEGORY	A	B	C	D
S-17	2300-3/4 456 (500-3/4)		2300-1/4 456 (500-1/4)	2300-1/2 456 (500-1/2)
CIRCLING	2300-1 453 (500-1)		2300-1/2 453 (500-1/2)	2400-2 553 (600-2)

GRAND ISLAND, NEBRASKA
Amdt 24 08325

GRAND ISLAND/ CENTRAL NEBRASKA RGNL (GRI)
40° 58' N-98° 19' W

VOR RWY 17