


RNAV (GPS) RWY 35

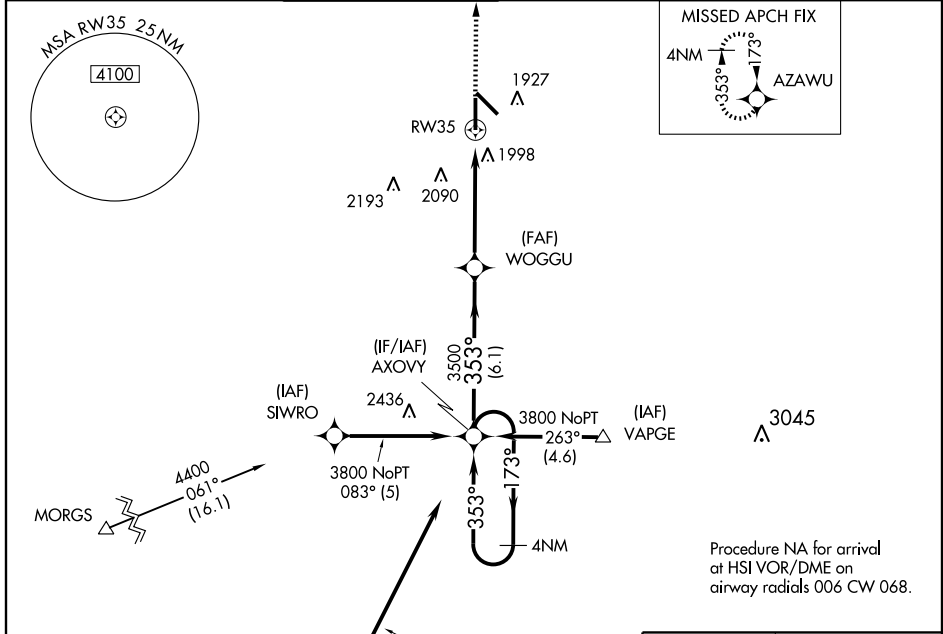
GRAND ISLAND/CENTRAL NEBRASKA RGNL (GRI)

WAAS CH 86799 W35A	APP CRS 353°	Rwy Idg 7002 TDZE 1847 Apt Elev 1847
--	------------------------	---

⚠ DME/DME RNP-0.3 NA. BARO-VNAV NA below -18°C (0°F). If local altimeter setting not received, use Aurora altimeter setting and increase all DAs/MDAs 60 feet. BARO-VNAV and VDP NA when using Aurora altimeter setting. For inoperative MALSR increase LPV visibility to RVR 4000 all Cats.

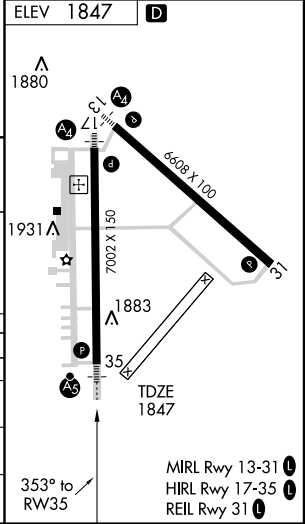
MALSR
 MISSED APPROACH:
Climb to 3500 direct
AZAWU and hold.

ATIS 127.4	MINNEAPOLIS CENTER 119.4 278.8	GRAND ISLAND TOWER ★ 118.2 (CTAF) 0 388.2	GND CON 121.9 388.2	CLNC DEL 121.9 (when tower closed)	UNICOM 122.95
----------------------	--	---	-------------------------------	---	-------------------------



NC-2, 22 OCT 2009 to 19 NOV 2009

NC-2, 22 OCT 2009 to 19 NOV 2009



4 NM Holding Pattern	AXOVOY	3500	AZAWU
3800	353°	353°	3500
WOGGU	353°	353°	3500
GS 3.00° TCH 55	353°	353°	3500
6.1 NM	3.7 NM	1.3	

CATEGORY	A	B	C	D
LPV DA		2097/24	250 (300-½)	
LPV/ VNAV DA		2283/50	436 (500-1)	
LPV MDA	2260/24	413 (500-½)	2260/40 413 (500-¾)	2260/50 413 (500-1)
CIRCLING		2300-1½	453 (500-1½)	2400-2 553 (600-2)

RNAV (GPS) RWY 35

MIRL Rwy 13-31
HIRL Rwy 17-35
REIL Rwy 31