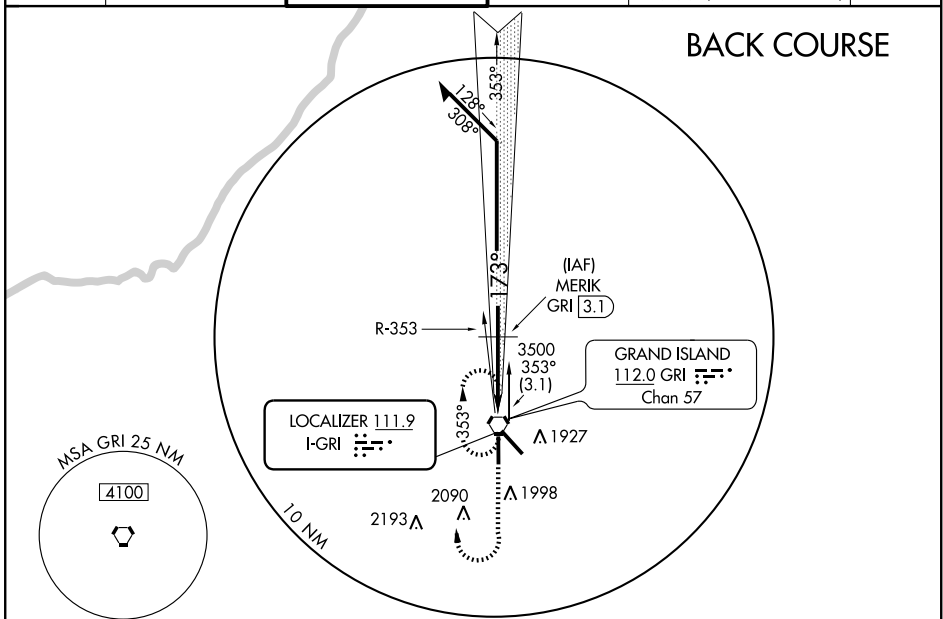


LOC I-GRI 111.9	APP CRS 173°	Rwy Idg 7002	TDZE 1844	Apt Elev 1847
---------------------------	------------------------	------------------------	---------------------	-------------------------

LOC/DME BC RWY 17

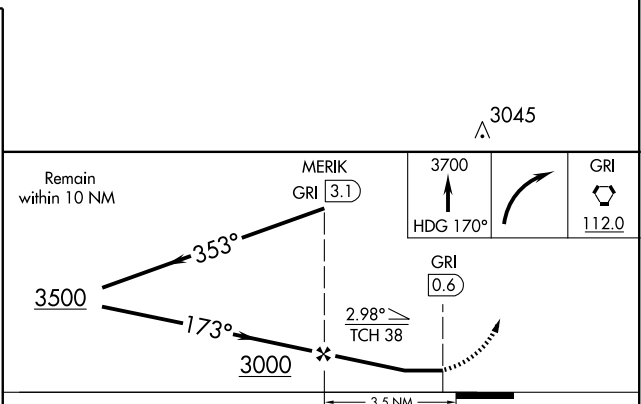
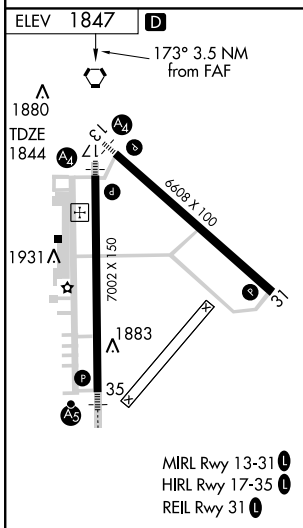
GRAND ISLAND/ CENTRAL NEBRASKA RGNL (GRI)

Simultaneous reception of I-GRI and GRI DME required. Disregard glide slope indications.		MALS 	MISSED APPROACH: Climb to 3700 heading 170° then right turn direct GRI VORTAC and hold.		
ATIS 127.4	MINNEAPOLIS CENTER 119.4 278.8	GRAND ISLAND TOWER ★ 118.2 (CTAF) 0 388.2	GND CON 121.9 388.2	CLNC DEL 126.05 (when tower closed)	UNICOM 122.95



NC-2, 22 OCT 2009 to 19 NOV 2009

NC-2, 22 OCT 2009 to 19 NOV 2009



CATEGORY	A	B	C	D
S-17	2160-¾ 316 (400-¾)		2160-1 316 (400-1)	
CIRCLING	2300-1	453 (500-1)	2300-1½ 453 (500-1½)	2400-2 553 (600-2)