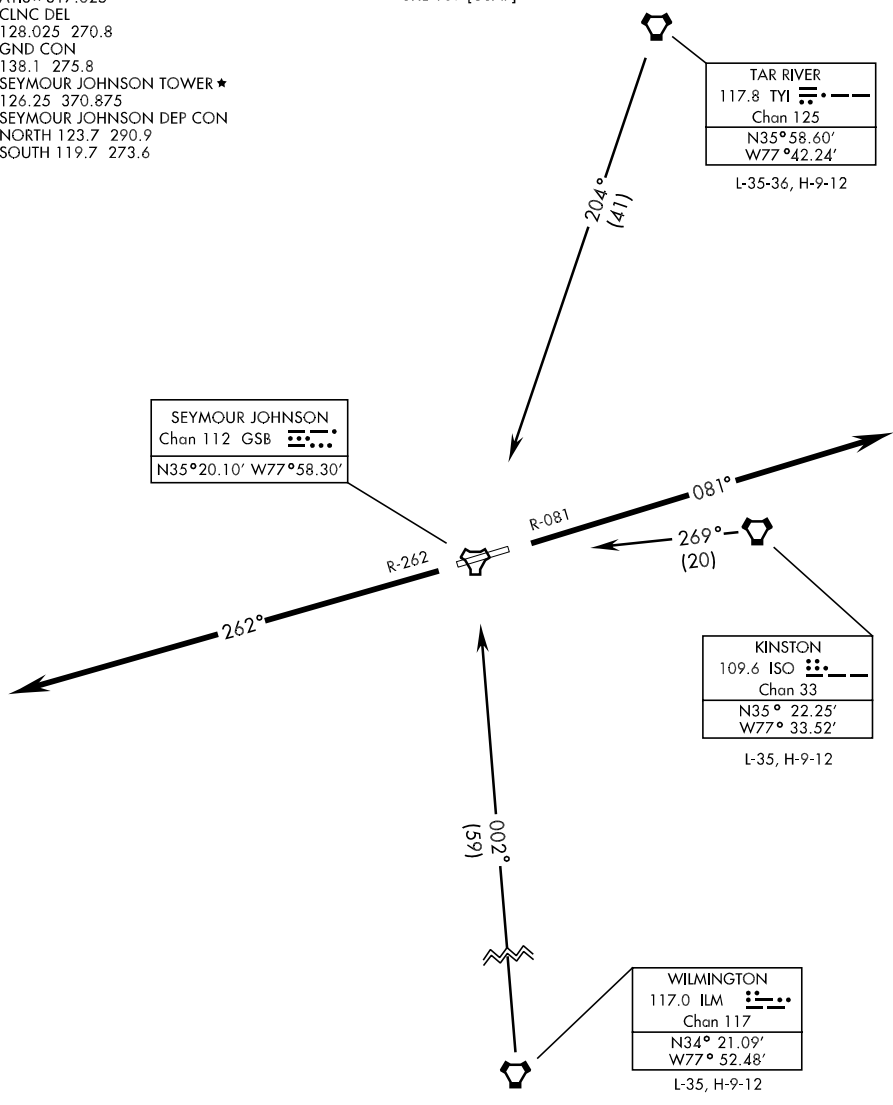


NEUSE-THREE DEPARTURE (NEUSE3 • GSB)

SEYMOUR JOHNSON AFB (KGSB)
GOLDSBORO, NORTH CAROLINA

ATIS ★ 317.625
CLNC DEL
128.025 270.8
GND CON
138.1 275.8
SEYMOUR JOHNSON TOWER ★
126.25 370.875
SEYMOUR JOHNSON DEP CON
NORTH 123.7 290.9
SOUTH 119.7 273.6

SHL-169 [USAF]



SE-2, 22 OCT 2009 to 19 NOV 2009

SE-2, 22 OCT 2009 to 19 NOV 2009

DEPARTURE ROUTE DESCRIPTION

TAKE-OFF RWY 8: Track outbound on GSB R-081 until passing 2500', then turn right/left on course climbing to assigned altitude.

TAKE-OFF RWY 26: Track outbound on GSB R-262 until passing 2500', then turn right/left on course climbing to assigned altitude.

NEUSE-THREE DEPARTURE (NEUSE3 • GSB)

GOLDSBORO, NORTH CAROLINA
SEYMOUR JOHNSON AFB (KGSB)