

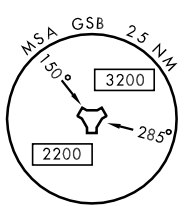
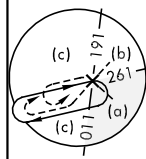
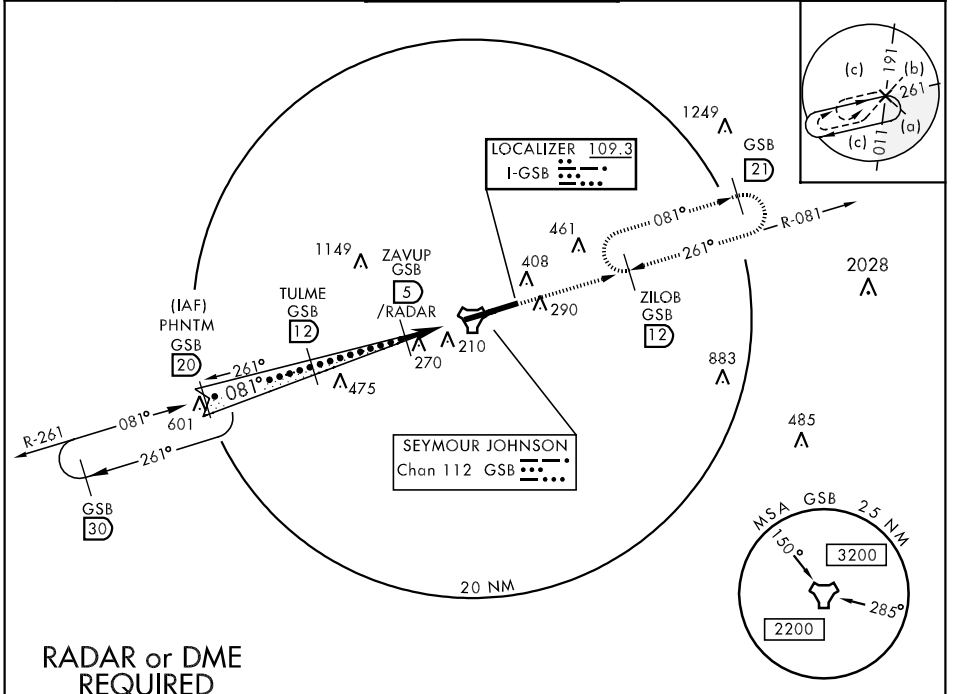
LOC I-GSB 109.3	APCH CRS 081°	Rwy Idg 11,760 TDZE 73 Arpt Elev 109	JAL-169 [USAF]	SEYMOUR JOHNSON AFB (KGSB)
---------------------------	-------------------------	---	----------------	----------------------------

* When ALS inop, increase CAT C vis to 1½ miles, CAT DE vis to 1¾ miles.
 ** Circling N of Rwy 8-26 not authorized.



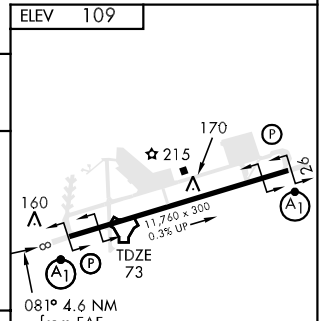
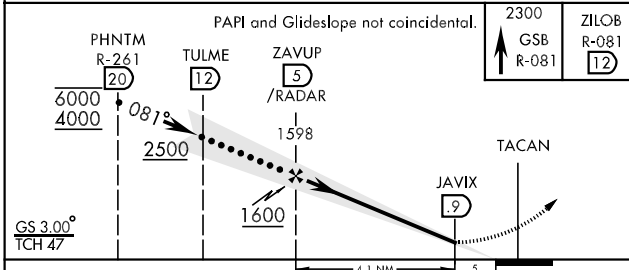
MISSED APPROACH: Climb to 2300 via GSB R-081 to 12 DME (ZILOB) and hold.

ATIS * 317.625	SEYMOUR JOHNSON APP CON 258°-110° 123.7 290.9 111°-257° 119.7 273.6	SEYMOUR JOHNSON TOWER * 126.25 370.875	GND CON 138.1 275.8	CLNC DEL 128.025 270.8
--------------------------	---	--	-------------------------------	----------------------------------



RADAR or DME REQUIRED

EMERG SAFE ALT 100 NM 3700



CATEGORY	A	B	C	D	E
S-ILS 8	334/50		261	(300-1)	
S-LOC 8 *	600/50	527	(500-1)	600/60 527	(500-1¼)
CIRCLING **	660-1 551	(600-1)	660-1½ 551 (600-1½)	660-2 551 (600-2)	740-2¼ 631 (700-2¼)

FAF to MAP 4.1 NM					
Knots	120	140	160	180	200
Min:Sec	2:03	1:45	1:32	1:22	1:14

SE-2, 22 OCT 2009 to 19 NOV 2009

SE-2, 22 OCT 2009 to 19 NOV 2009