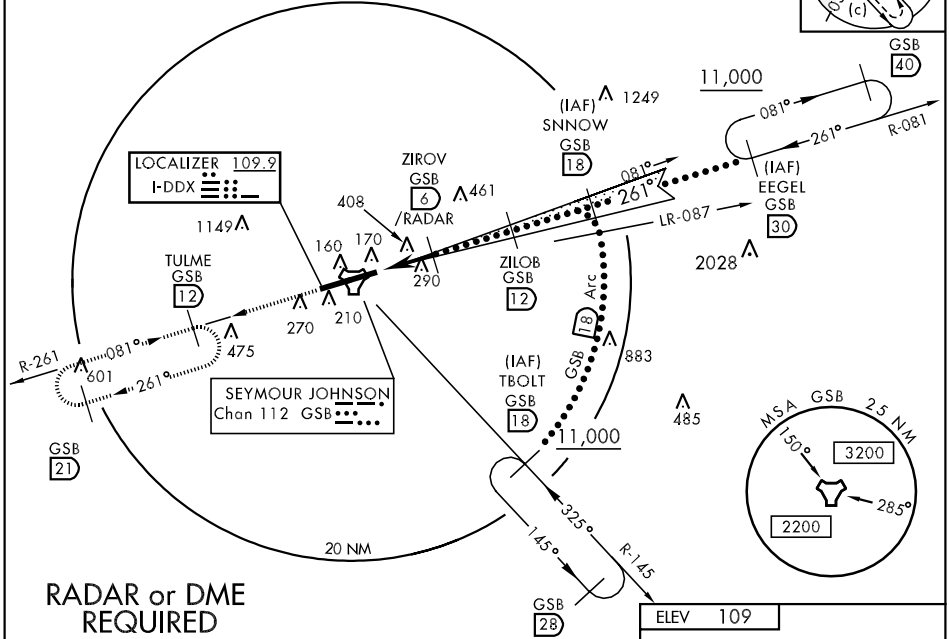
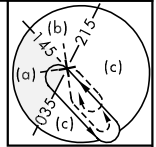


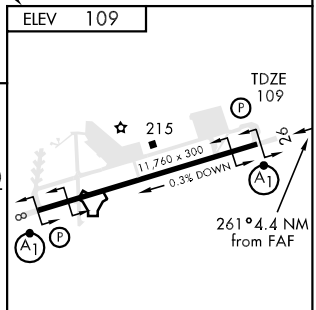
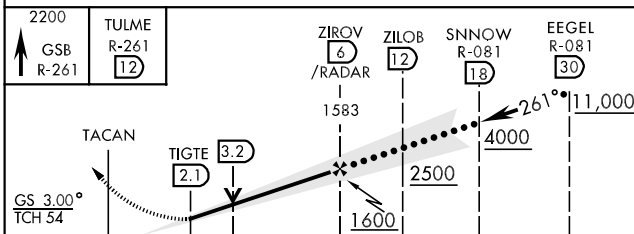
LOC I-DDX 109.9	APCH CRS 261°	Rwy Idg TDZE Arpt Elev 11,760 109 109	JAL-169 [USAF]	SEYMOUR JOHNSON AFB (KGSB)
* When ALS inop, increase RVR to 40 and vis to ¾ mile. ** When ALS inop, increase CAT AB RVR to 50 and vis to 1 mile, CAT C vis to 1½ miles, CAT D vis to 1¾ miles, CAT E vis to 2 miles.			ALSF-1 	MISSED APPROACH: Climb to 2200 via GSB R-261 to 12 DME (TULME) and hold.
ATIS ★ 317.625	SEYMOUR JOHNSON APP CON 258°-110° 123.7 290.9 111°-257° 119.7 273.6	SEYMOUR JOHNSON TOWER ★ 126.25 370.875	GND CON 138.1 275.8	CLNC DEL 128.025 270.8

*** Circling N of Rwy 8-26 not authorized.



RADAR or DME REQUIRED

EMERG SAFE ALT 100 NM 3700



CATEGORY	A	B	C	D	E
S-ILS 26*	309/24		200	(200-½)	
S-LOC 26**	680/24	571 (600-½)	680/50 571 (600-1)	680/60 571 (600-¼)	680-1½ 571 (600-1½)
CIRCLING***	680-1	571 (600-1)	680-1½ 571 (600-½)	680-2 571 (600-2)	740-2¼ 631 (700-2¼)

HIRL Rwy 8-26

FAF to MAP 3.9 NM					
Knots	120	140	160	180	200
Min:Sec	1:57	1:40	1:28	1:18	1:10

SE-2, 22 OCT 2009 to 19 NOV 2009

SE-2, 22 OCT 2009 to 19 NOV 2009