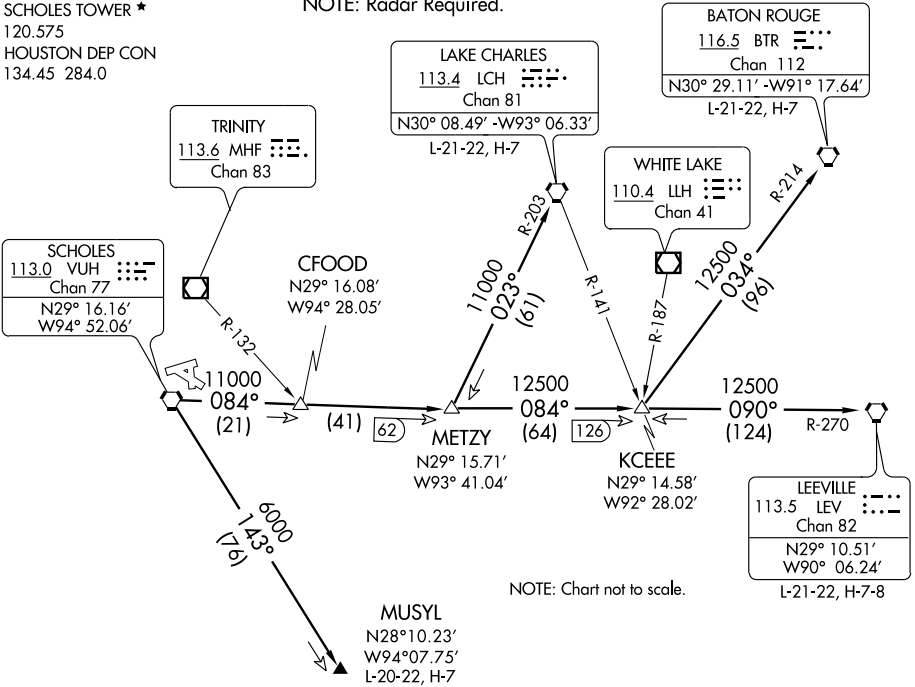


# SCHOLES THREE DEPARTURE

ASOS  
119.275  
GND CON  
118.625  
SCHOLES TOWER ★  
120.575  
HOUSTON DEP CON  
134.45 284.0

NOTE: LCH, BTR, and LEV transitions are ATC assigned only, do not file.  
NOTE: For LCH, BTR, LEV transitions, this procedure requires over water flight not to exceed 35 miles from nearest shoreline.  
NOTE: Radar Required.



**TAKEOFF MINIMUMS:**

Rwy 13, 31, 35, standard.  
Rwy 17, 300-1 or standard with a minimum climb of 502' per NM to 300'.

(TAKE-OFF NOTES ON FOLLOWING PAGE)

**DEPARTURE ROUTE DESCRIPTION**

When entering controlled airspace, fly assigned heading for vectors to VUH VORTAC, maintain 4000', expect filed altitude 10 minutes after departure.

BATON ROUGE TRANSITION (VUH3.BTR): From over VUH VORTAC via VUH R-084 to KCEEE INT, then via BTR R-214 to BTR VORTAC.

LAKE CHARLES TRANSITION (VUH3.LCH): From over VUH VORTAC via VUH R-084 to METZY INT, then via LCH R-203 to LCH VORTAC.

LEEVILLE TRANSITION (VUH3.LEV): From over VUH VORTAC via VUH R-084 to KCEEE INT, then via LEV R-270 to LEV VORTAC.

MUSYL TRANSITION (VUH3.MUSYL): From over VUH VORTAC via VUH R-143 to MUSYL.