

GALVESTON, TEXAS

AL-164 (FAA)

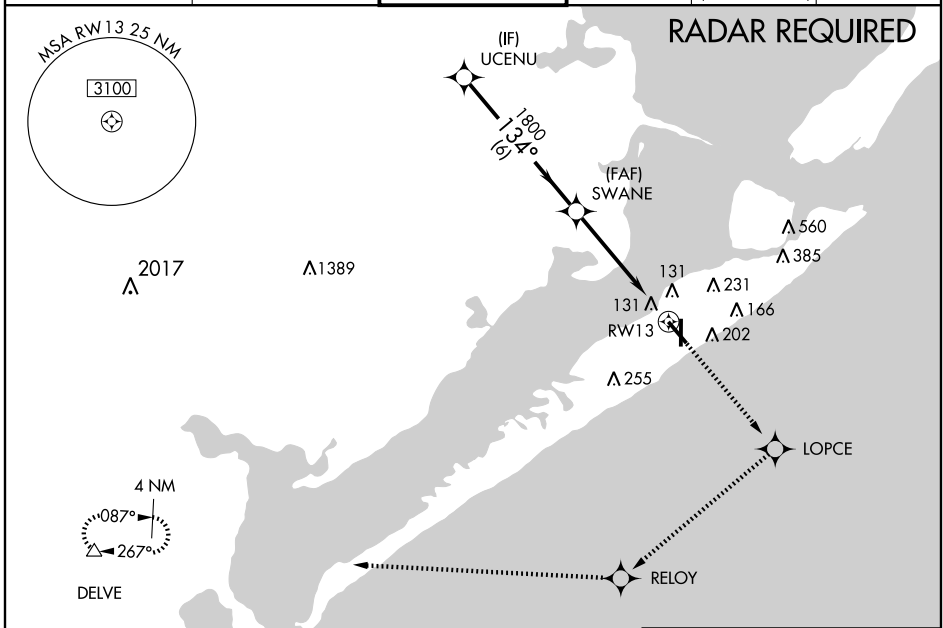
WAAS Chan 65606 W13A	APP CRS 134°	Rwy Idg 6000 TDZE 5 Apt Elev 6
--	------------------------	---

RNAV (GPS) RWY 13

GALVESTON/ SCHOLES INTL AT GALVESTON (GLS)

Baro-VNAV NA below -15°C (5°F). DME/DME RNP-0.3 NA. Circling NA east of Rwy 17 and northeast of Rwy 31. For inoperative MALS, increase LPV all Cats visibility to ¾, LNAV/VNAV and LNAV Cat E visibility to 1¼.	MALS	MISSED APPROACH: Climb to 1800 direct LOPCE and right turn via 224° track to RELOY and via 267° track to DELVE and hold.
---	------	--

ASOS 119.275	HOUSTON APP CON 134.45 284.0	SCHOLES TOWER* 120.575 (CTAF)	GND CON 118.625	CLNC DEL 135.35 (When tower closed)	UNICOM 123.05
------------------------	--	---	---------------------------	--	-------------------------



SC-5, 22 OCT 2009 to 19 NOV 2009

SC-5, 22 OCT 2009 to 19 NOV 2009

ELEV 6		134° to RWY 13		56 96 161 148 94 65 60 35 51	
1800 LOPCE 224° TRK RELOY 267° TRK DELVE		UCENU SWANE RWY 13 * 1.4 NM to RWY 13 * LNAV only		TDZE 5 6000 x 1.50 6000 x 1.50 6000 x 1.50 6000 x 1.50	
GS 3.00° TCH 53		VGSi and RNAV glidepath not coincident.			
6 NM		4 NM		1.4 NM	
CATEGORY	A	B	C	D	E
LPV DA	260-½		255 (300-½)		
LNAV/VNAV DA	480-1¼		475 (500-1¼)		
LNAV MDA	480-½	475 (500-½)	480-¾ 475 (500-¾)	480-1 475 (500-1)	480-1¼ 475 (500-1¼)
CIRCLING	500-1¾ 494 (500-1¾)		560-2 554 (600-2)		620-2¼ 614 (700-2¼)
				REIL Rws 17, 31, and 35 MIRL Rwy 17-35 HIRL Rwy 13-31	

GALVESTON, TEXAS
Orig 09015

GALVESTON/ SCHOLES INTL AT GALVESTON (GLS)
29°16'N-94°52'W
RNAV (GPS) RWY 13