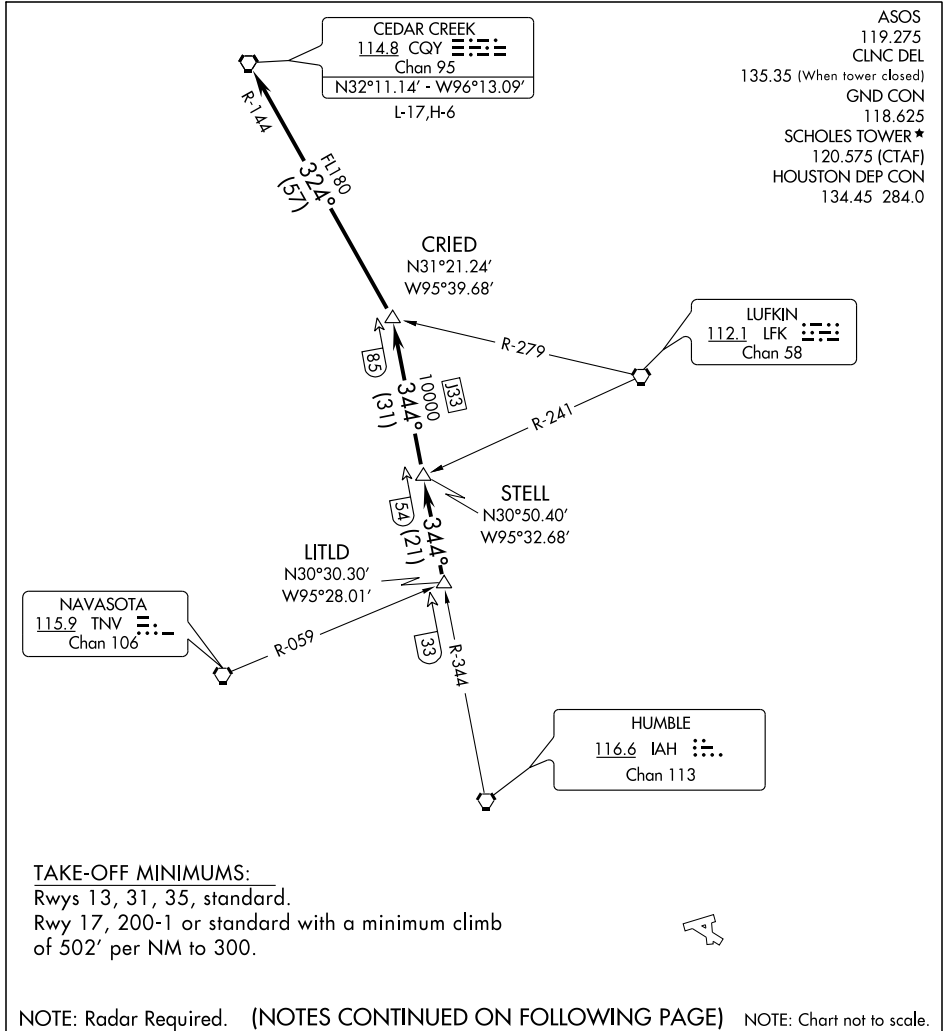


CRIED THREE DEPARTURE



SC-5, 22 OCT 2009 to 19 NOV 2009

SC-5, 22 OCT 2009 to 19 NOV 2009

TAKE-OFF MINIMUMS:
 Rwy 13, 31, 35, standard.
 Rwy 17, 200-1 or standard with a minimum climb
 of 502' per NM to 300.



NOTE: Radar Required. (NOTES CONTINUED ON FOLLOWING PAGE) NOTE: Chart not to scale.

DEPARTURE ROUTE DESCRIPTION

When entering controlled airspace, fly assigned heading for vectors to LITLD INT, maintain 4000. Expect filed altitude 10 minutes after departure. Thence
 via IAH R-344 to STELL INT, then via IAH R-344 to CRIED INT, then left turn via CQY R-144 to CQY VORTAC.

CRIED THREE DEPARTURE