

FRESNO, CALIFORNIA

AL-162 (FAA)

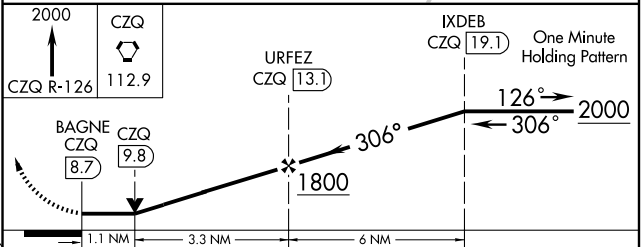
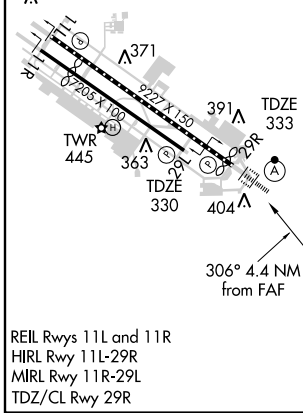
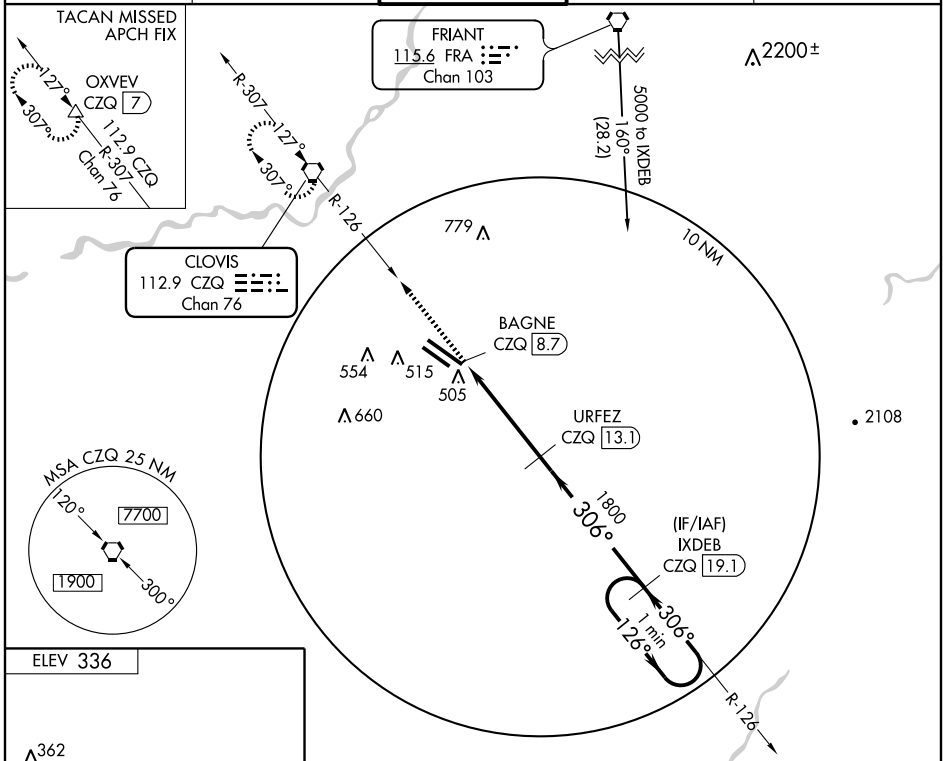
# VOR/DME or TACAN RWY 29R

VORTAC CZQ <b>112.9</b> Chan 76	APP CRS <b>306°</b>	Rwy 29R Idg <b>8915</b> TDZE <b>333</b> Apt Elev <b>336</b>	Rwy 29L Idg <b>7205</b> TDZE <b>330</b> Apt Elev <b>336</b>
---------------------------------------	------------------------	---	---

FRESNO YOSEMITE INTL (FAT)

**⚠** For inoperative ALSF-2, increase S-29R Cat E visibility to 1½.  
**⚠** MISSED APPROACH: Climb to 2000 via CZQ R-126 to CZQ VORTAC and hold. (TACAN aircraft continue climb to 3000 via CZQ R-307 to OXVEV/7 DME and hold (NW, RT, 127° inbound).

ATIS <b>121.35 273.6</b>	FRESNO APP CON <b>119.6 351.95</b>	FRESNO TOWER <b>118.2 251.1</b>	GND CON <b>121.7 348.6</b>	CLNC DEL <b>124.35 348.6</b>
-----------------------------	---------------------------------------	------------------------------------	-------------------------------	---------------------------------



CATEGORY	A	B	C	D	E
S-29R	760/24 427 (500-½)		760/40 427 (500-¾)	760/50 427 (500-1)	
SIDESTEP 29L	760-1 430 (500-1)		760-1½ 430 (500-1½)	760-2 430 (500-2)	
CIRCLING	820-1 484 (500-1)		820-1½ 484 (500-1½)	920-2 584 (600-2)	1140-2¾ 804 (900-2¾)

FRESNO, CALIFORNIA  
Amdt 1A 09295

36°47'N-119°43'W

FRESNO YOSEMITE INTL (FAT)

# VOR/DME or TACAN RWY 29R

SW-2, 22 OCT 2009 to 19 NOV 2009

SW-2, 22 OCT 2009 to 19 NOV 2009