


RNAV (GPS) RWY 29R

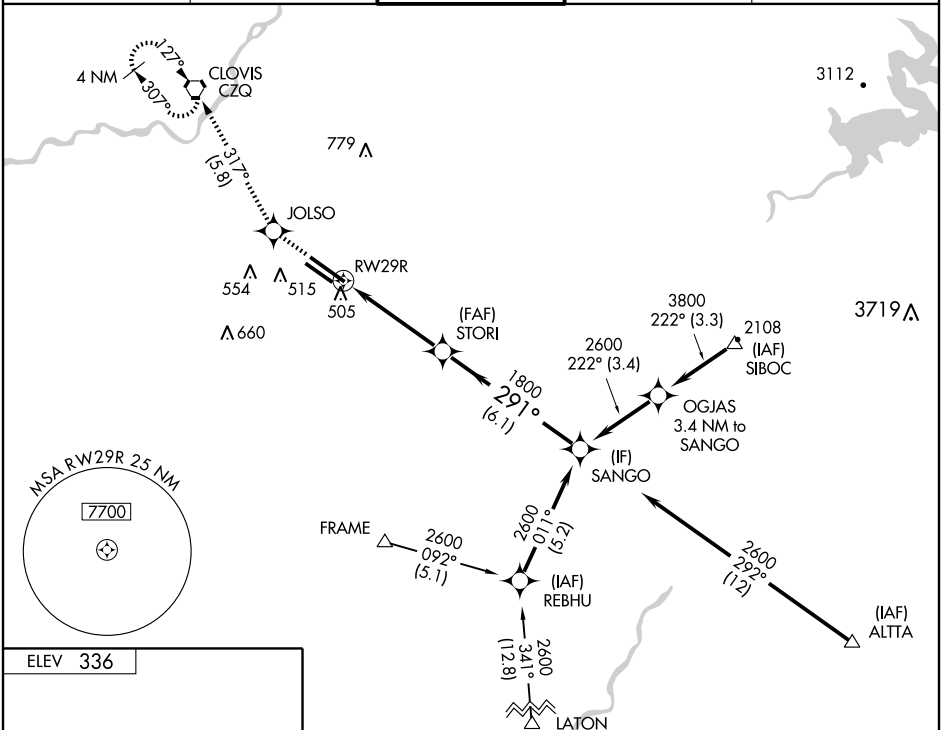
FRESNO YOSEMITE INTL (FAT)

WAAS CH 81803 W29A	APP CRS 291°	Rwy Idg TDZE Apt Elev	8915 333 336
--	------------------------	-----------------------------	---

▽ DME/DME RNP-0.3 NA.
Baro-VNAV NA below -15°C (5°F).
For inoperative ALSF-2, increase LPV visibility to RVR 4000, all Cats.

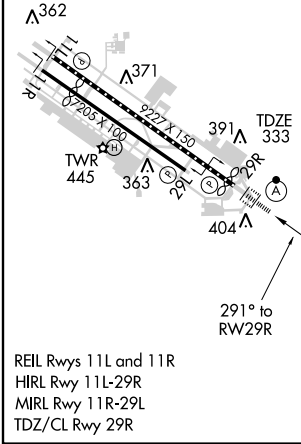
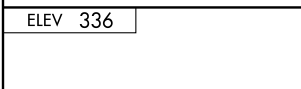
ALSF-2 
MISSED APPROACH: Climb to 2000 direct JOLSO and via 317° track to CZQ VORTAC and hold.

ATIS 121.35 273.6	FRESNO APP CON 119.6 351.95	FRESNO TOWER 118.2 251.1	GND CON 121.7 348.6	CLNC DEL 124.35 348.6
-----------------------------	---------------------------------------	------------------------------------	-------------------------------	---------------------------------

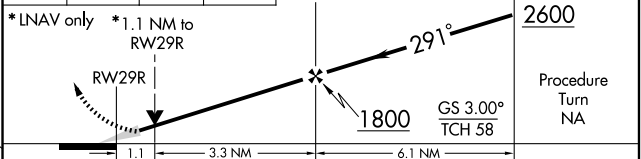


SW-2, 22 OCT 2009 to 19 NOV 2009

SW-2, 22 OCT 2009 to 19 NOV 2009



2000	JOLSO	trk 317°	CZQ	VGSI and RNAV glidepath not coincident. SANGO
------	-------	----------	-----	---



CATEGORY	A	B	C	D
LPV DA	590/24 257 (300-½)			
LNNAV/VNAV DA	760/50 427 (500-1)			
LNNAV MDA	760/24 427 (500-½)	760/40 427 (500-¾)		760/50 427 (500-1)
CIRCLING	820-1½ 484 (500-1½)		920-2 584 (600-2)	