

RNAV (GPS) RWY 29L

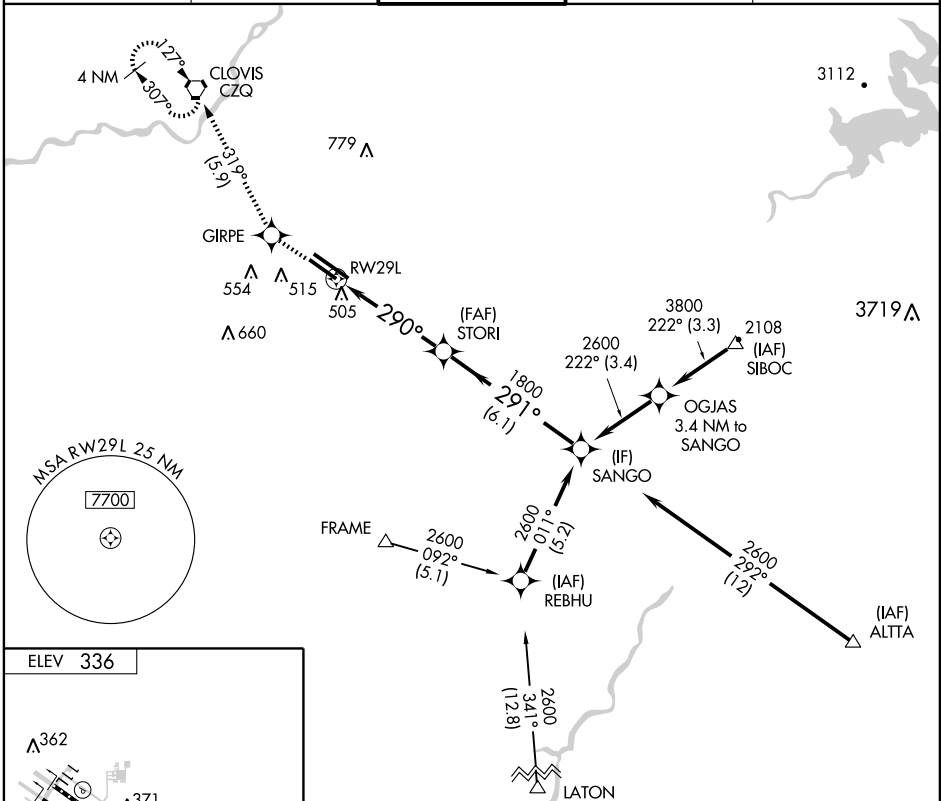
FRESNO YOSEMITE INTL (FAT)

APP CRS	Rwy Idg	7205
290°	TDZE	330
	Apt Elev	336

DME/DME RNP-0.3 NA.
Straight-in minimums NA at night.

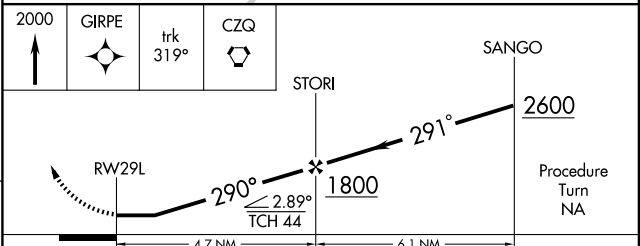
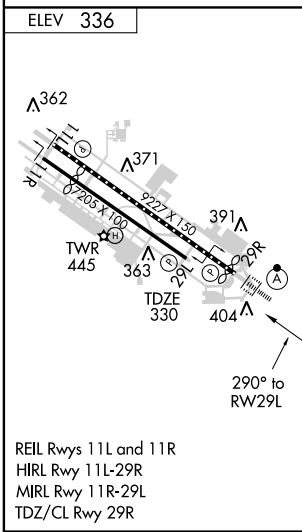
MISSED APPROACH: Climb to 2000 direct GIRPE and via 319° track to CZQ VORTAC and hold.

ATIS 121.35 273.6	FRESNO APP CON 119.6 351.95	FRESNO TOWER 118.2 251.1	GND CON 121.7 348.6	CLNC DEL 124.35 348.6
-----------------------------	---------------------------------------	------------------------------------	-------------------------------	---------------------------------



SW-2, 22 OCT 2009 to 19 NOV 2009

SW-2, 22 OCT 2009 to 19 NOV 2009



CATEGORY	A	B	C	D
LNVA MDA	760-1	430 (500-1)	760-1½ 430 (500-1½)	760-1½ 430 (500-1½)
CIRCLING	820-1	484 (500-1)	820-1½ 484 (500-1½)	920-2 584 (600-2)