

RNAV (GPS) RWY 11L

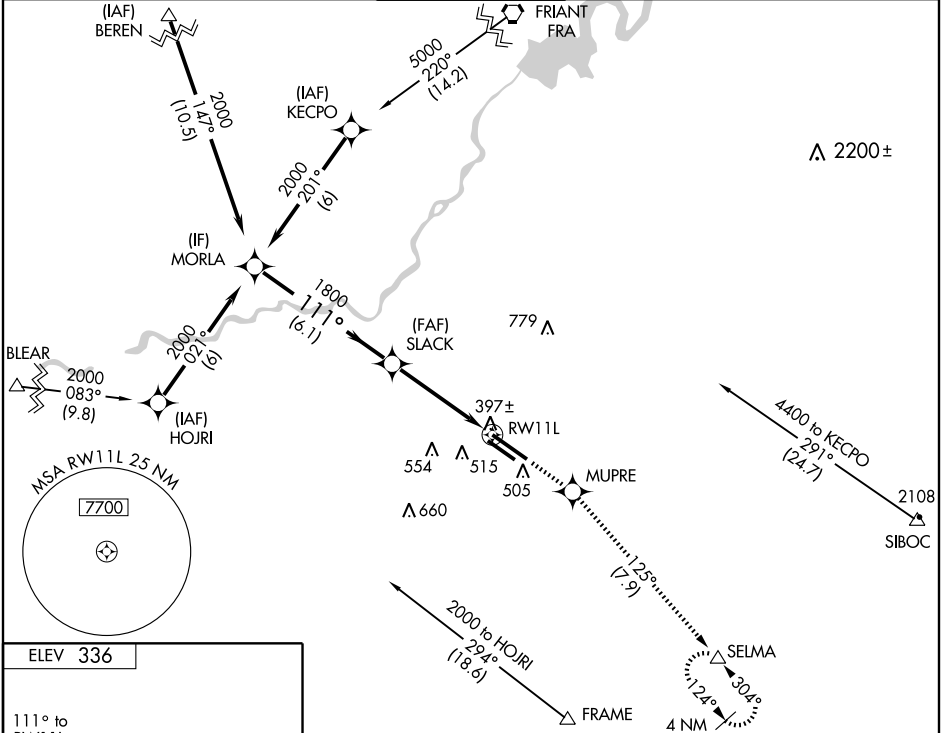
FRESNO YOSEMITE INTL (FAT)

WAAS CH 77505 W11A	APP CRS 111°	Rwy Idg TDZE Apt Elev	9227 336 336
--	------------------------	-----------------------------	---

DME/DME RNP-0.3 NA.
Baro-VNAV NA below -15°C (5°F).

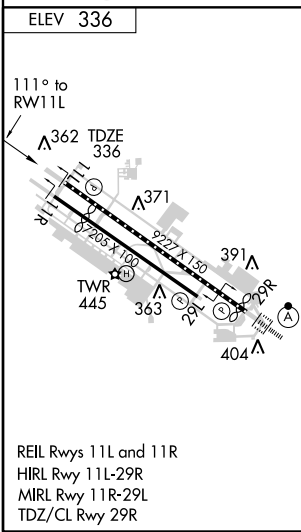
MISSED APPROACH: Climb to 2000 direct MUPRE and via 125° track to SELMA and hold.

ATIS 121.35 273.6	FRESNO APP CON 119.6 351.95	FRESNO TOWER 118.2 251.1	GND CON 121.7 348.6	CLNC DEL 124.35 348.6
-----------------------------	---------------------------------------	------------------------------------	-------------------------------	---------------------------------



SW-2, 22 OCT 2009 to 19 NOV 2009

SW-2, 22 OCT 2009 to 19 NOV 2009



MORLA	2000	MUPRE	trk 125°	SELMA
VGSI and descent angles not coincident.				
Procedure Turn NA	2000	SLACK	* 1 NM to RWY 11L	* LNAV only
GS 3.00°	111°	1800		
TCH 45	6.1 NM	3.4 NM	1 NM	
CATEGORY	A	B	C	D
LPV DA	590/50 254 (300-1)			
LNAV/VNAV DA	760-1½ 424 (500-1½)			
LNAV MDA	680/50 344 (400-1)			680/60 344 (400-1½)
CIRCLING	820-1	484 (500-1)	820-1½ 484 (500-1½)	920-2 584 (600-2)