

FRESNO, CALIFORNIA

AL-162 (FAA)

# ILS or LOC/DME RWY 29R

LOC/DME I-FAT <b>111.3</b> Chan 50	APP CRS <b>291°</b>	Rwy 29R Idg <b>8915</b> TDZE <b>333</b> Apt Elev <b>336</b>	Rwy 29L Idg <b>7205</b> TDZE <b>330</b> Apt Elev <b>336</b>
--	------------------------	---	---

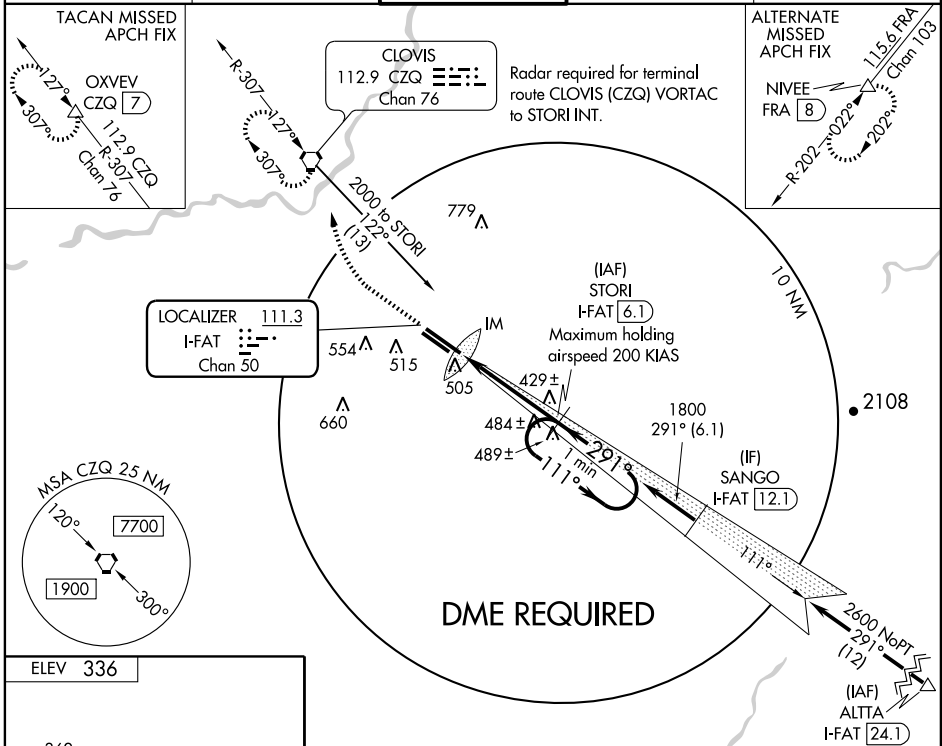
FRESNO YOSEMITE INTL (FAT)

**▼** For inoperative ALSF-2, increase S-ILS Cat E visibility to RVR 4000 and S-LOC Cat E visibility to RVR 6000.  
**▲** Hold in lieu of PT not authorized for Cat E aircraft.

ALSF-2 Rwy 29R

MISSED APPROACH: Climb to 800, then climbing right turn to 2000 direct CZQ VORTAC and hold. (TACAN aircraft climb to 3000 via CZQ VORTAC R-307 to OXVEV/CZQ 7 DME and hold NW, RT, 127° inbound.)

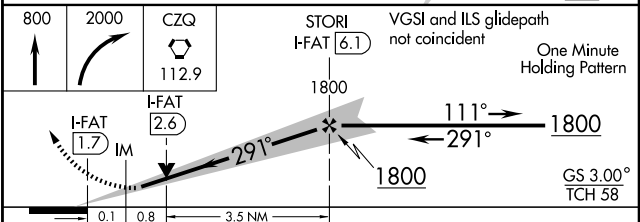
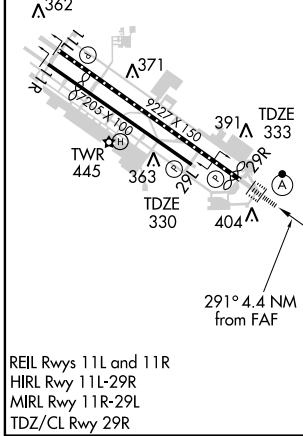
ATIS <b>121.35 273.6</b>	FRESNO APP CON <b>119.6 351.95</b>	FRESNO TOWER <b>118.2 251.1</b>	GND CON <b>121.7 348.6</b>	CLNC DEL <b>124.35 348.6</b>
-----------------------------	---------------------------------------	------------------------------------	-------------------------------	---------------------------------



SW-2, 22 OCT 2009 to 19 NOV 2009

SW-2, 22 OCT 2009 to 19 NOV 2009

ELEV 336
----------



CATEGORY	A	B	C	D	E
S-ILS 29R	533/18 200 (200-½)				533/24 200 (200-½)
S-LOC 29R	680/24 347 (400-½)			680/40 347 (400-¾)	
SIDESTEP RWY 29L	740-1	410 (500-1)	740-1½ 410 (500-1½)	740-2	410 (500-2)
CIRCLING	820-1	484 (500-1)	820-1½ 484 (500-1½)	920-2 584 (600-2)	1140-2¾ 804 (900-2¾)

FRESNO, CALIFORNIA  
Amdt 37 09295

36°47'N-119°43'W

# ILS or LOC/DME RWY 29R