

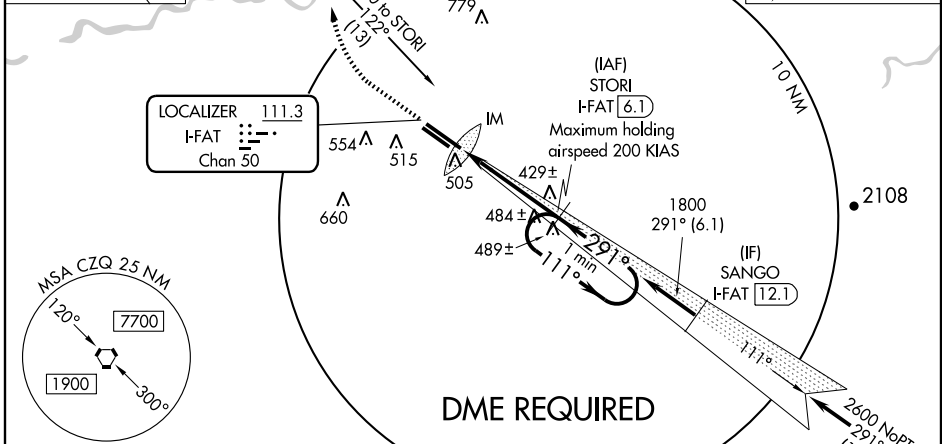
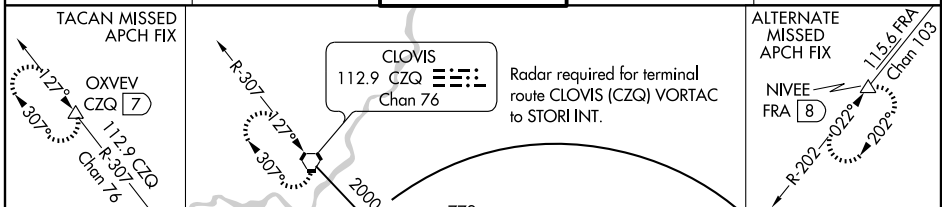
ILS RWY 29R (CAT III)

FRESNO YOSEMITE INTL (F'AT)

LOC/DME I-FAT 111.3 Chan 50	APP CRS 291°	Rwy Idg TDZE 333 Apt Elev 336	8915
--	------------------------	---	-------------

ALSF-2 	MISSED APPROACH: Climb to 800, then climbing right turn to 2000 direct CZQ VORTAC and hold. (TACAN aircraft climb to 3000 via CZQ VORTAC R-307 to OXVEV/ CZQ 7 DME and hold NW, RT, 127° inbound.)		
	ATIS 121.35 273.6	FRESNO APP CON 119.6 351.95	FRESNO TOWER 118.2 251.1

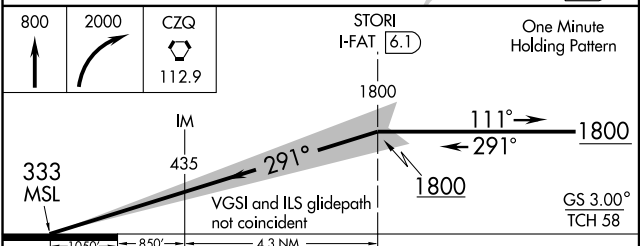
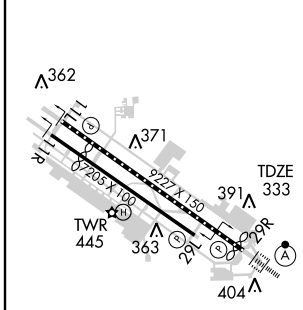
CLNC DEL 124.35 348.6



SW-2, 22 OCT 2009 to 19 NOV 2009

SW-2, 22 OCT 2009 to 19 NOV 2009

ELEV 336



CATEGORY	A	B	C	D
S-ILS 29R	CAT IIIa	RVR 07		
S-ILS 29R	CAT IIIb	RVR 06		
S-ILS 29R	CAT IIIc	NA		

CATEGORY III ILS - SPECIAL AIRCREW & AIRCRAFT CERTIFICATION REQUIRED