

FRESNO, CALIFORNIA

AL-162 (FAA)

ILS RWY 29R (CAT II)

FRESNO YOSEMITE INTL (F'AT)

LOC/DME I-FAT 111.3 Chan 50	APP CRS 291°	Rwy Idg TDZE Apt Elev	8915 333 336
--	------------------------	-----------------------------	---

	MISSED APPROACH: Climb to 800, then climbing right turn to 2000 direct CZQ VORTAC and hold. (TACAN aircraft climb to 3000 via CZQ VORTAC R-307 to OXVEV/ CZQ 7 DME and hold NW, RT, 127° inbound.)

ATIS 121.35 273.6	FRESNO APP CON 119.6 351.95	FRESNO TOWER 118.2 251.1	GND CON 121.7 348.6	CLNC DEL 124.35 348.6
-----------------------------	---------------------------------------	------------------------------------	-------------------------------	---------------------------------

TACAN MISSED APCH FIX

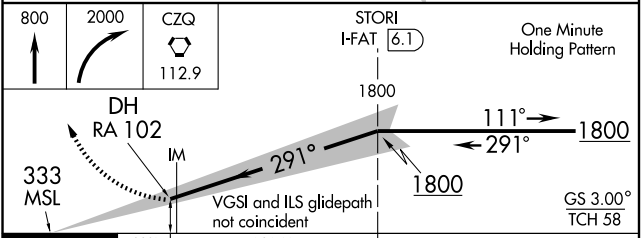
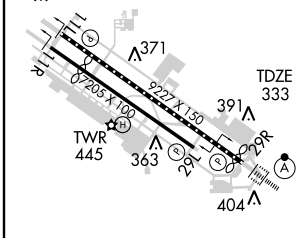
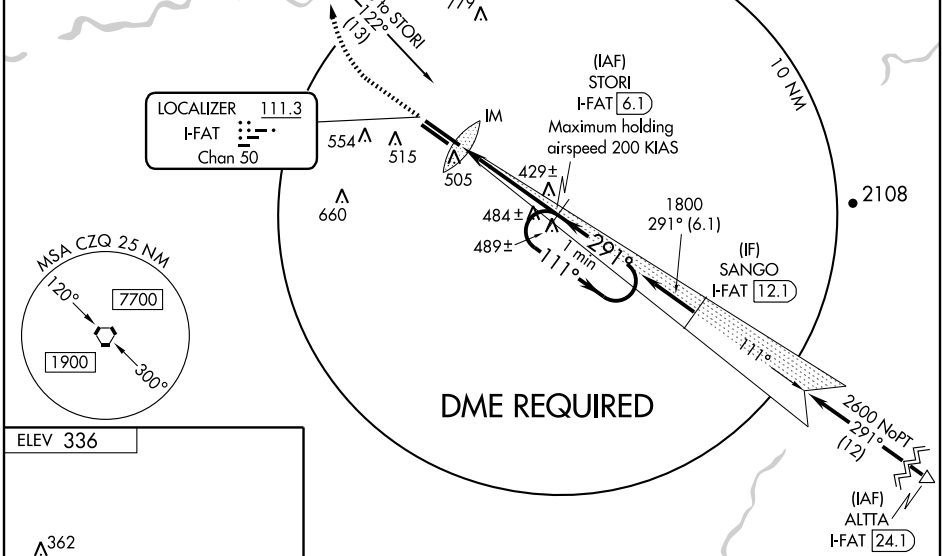
OXVEV CZQ 7
112.9 CZQ
R-307
Chan 76

CLOVIS
112.9 CZQ
Chan 76

Radar required for terminal route CLOVIS (CZQ) VORTAC to STORI INT.

ALTERNATE MISSED APCH FIX

NIVEE FRA 8
113.6 FRA
R-202
Chan 103



CATEGORY	A	B	C	D
S-ILS 29R	433/12 100 RA 102			

CATEGORY II ILS - SPECIAL AIRCREW & AIRCRAFT CERTIFICATION REQUIRED

REIL Rwy 11L and 11R
HIRL Rwy 11L-29R
MIRL Rwy 11R-29L
TDZ/CL Rwy 29R

FRESNO, CALIFORNIA
Amdt 37 09295

36°47'N-119°43'W

FRESNO YOSEMITE INTL (F'AT)
ILS RWY 29R (CAT II)

SW-2, 22 OCT 2009 to 19 NOV 2009

SW-2, 22 OCT 2009 to 19 NOV 2009