

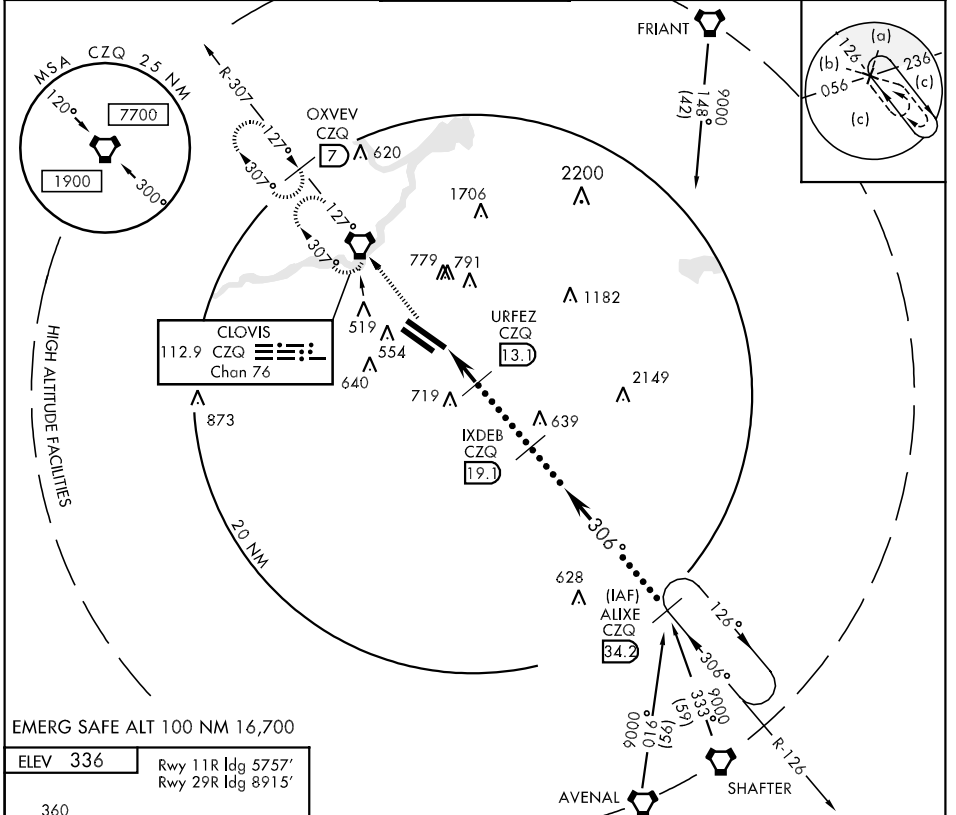
FRESNO, CALIFORNIA

HI-VOR/DME or TACAN RWY 29R

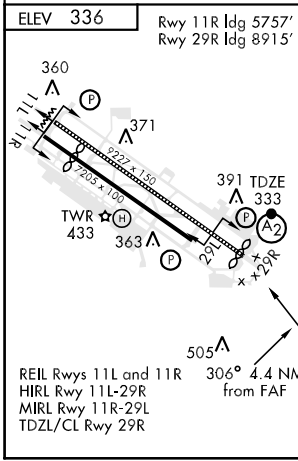
VORTAC CZQ 112.9 Chan 76	APCH CRS 306°	Rwy Idg TDZE Arpt Elev 8915 333 336	JAL-162 [USAF]	FRESNO YOSEMITE INTL (KFAT)
--	-------------------------	---	----------------	-----------------------------

▼ *When ALS inop, increase CAT C RVR to 60, CAT DE vis to 1½.
⚠ ALSF-2 MISSED APPROACH: Climb to 2000 via CZQ VORTAC R-126 to CZQ VORTAC and hold. (TACAN acct continue climb to 3000 via CZQ R-307 to OXVEV 7 DME and hold NW, RT 127° inbound).

ATIS 121.35 273.6	FRESNO APP CON 132.35 323.25	FRESNO TOWER 118.2 251.1	GND CON 121.7 348.6	CLNC DEL 124.35 348.6
-----------------------------	--	------------------------------------	-------------------------------	---------------------------------



EMERG SAFE ALT 100 NM 16,700



2000 R-126 CZQ BAGNE 8.7 9.8 URFEZ 13.1 IXDEB 19.1 ALIXE R-126 34.2 16,000 9000 4.4 NM 2.99° TCH 75	CATEGORY C D E	
	S-29R* 760/40 427 (500-34)	760/50 427 (500-1)
REIL Rwy 11L and 11R HIRL Rwy 11L-29R MIRL Rwy 11R-29L TDZL/CL Rwy 29R	SIDESTEP 29L 760-1½ 430 (500-1½)	
	760-2 430 (500-2)	1140-2¾ 804 (900-2¾)

FRESNO, CALIFORNIA 36°47'N-119°43'W FRESNO YOSEMITE INTL (KFAT)

Amdt 1 07354

HI-VOR/DME or TACAN RWY 29R

SW-2, 22 OCT 2009 to 19 NOV 2009

SW-2, 22 OCT 2009 to 19 NOV 2009