

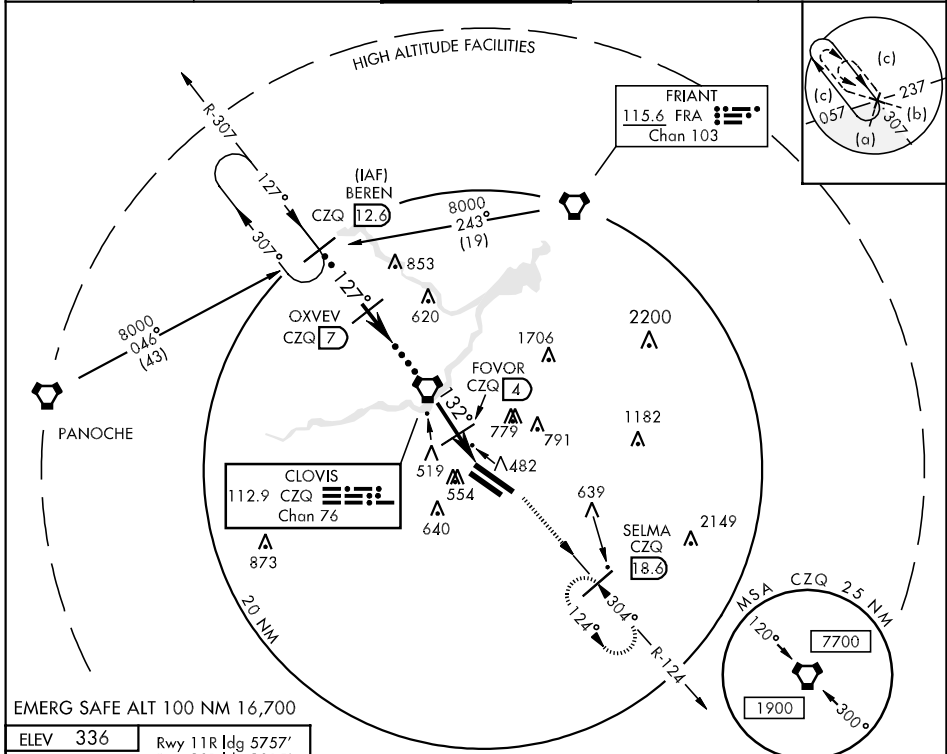
FRESNO, CALIFORNIA

HI-VOR/DME or TACAN RWY 11L

VORTAC CZQ 112.9 Chan 76	APCH CRS 132°	Rwy ldg TDZE 9227 336 Arpt Elev 336	JAL-162 [USAF]	FRESNO YOSEMITE INTL (KFAT)
--	-------------------------	---	----------------	-----------------------------

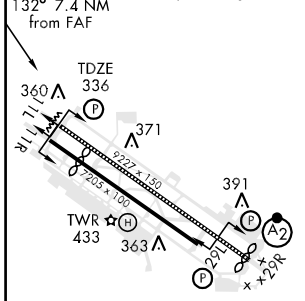
MISSED APPROACH: Climbing left turn to 2000 via CZQ R-124 to SELMA 18.6 DME and hold.

ATIS 121.35 273.6	FRESNO APP CON 119.6 351.95	FRESNO TOWER 118.2 251.1	GND CON 121.7 348.6	CLNC DEL 124.35 348.6
-----------------------------	---------------------------------------	------------------------------------	-------------------------------	---------------------------------



EMERG SAFE ALT 100 NM 16,700

ELEV 336	Rwy 11R ldg 5757'
132° 7.4 NM from FAF	Rwy 29R ldg 8915'



REIL Rws 11L and 11R
 HIRL Rwy 11L-29R
 MIRL Rwy 11R-29L
 TDZL/CL Rwy 29R



	4 NM	2 NM	0.9	0.5
CATEGORY	C	D	E	
S-11L	800/60 464 (500-1½)	800-1½ 464 (500-1½)	800-1¾ 464 (500-1¾)	
SIDESTEP 11R	800-1½ 467 (500-1½)	800-2	467 (500-2)	
CIRCLING	820-1½	920-2	1140-2¾	
	484 (500-1½)	584 (600-2)	804 (900-2¾)	

FRESNO, CALIFORNIA
 Amdt 1 07354

36°47'N-119°43'W

FRESNO YOSEMITE INTL (KFAT)

HI-VOR/DME or TACAN RWY 11L

SW-2, 22 OCT 2009 to 19 NOV 2009

SW-2, 22 OCT 2009 to 19 NOV 2009