

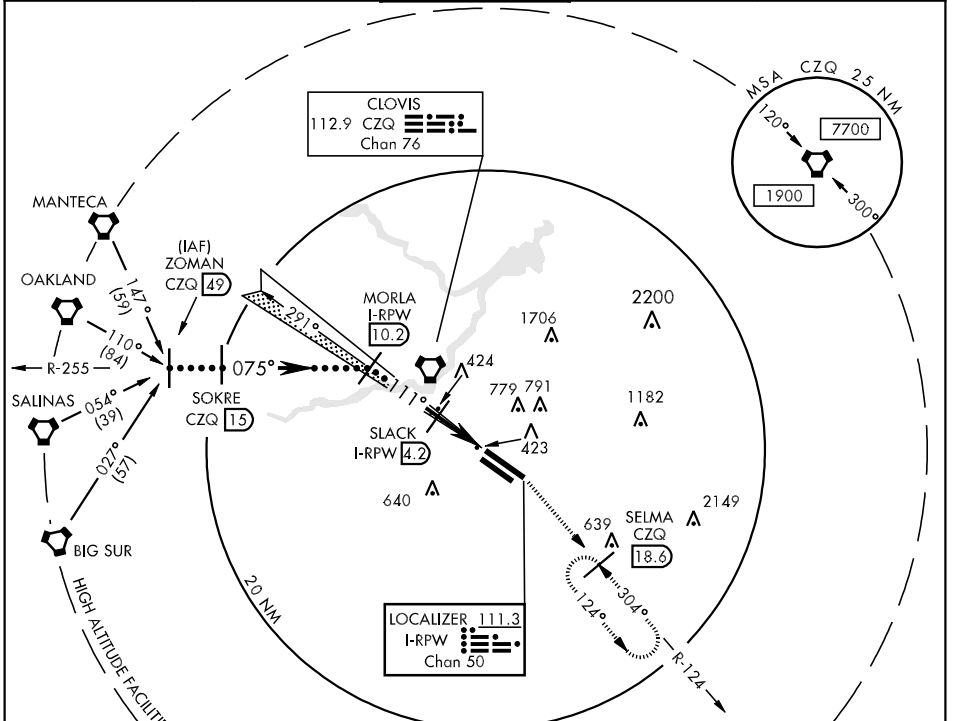
FRESNO, CALIFORNIA

# HI-LOC/DME RWY 11L

LOC/DME I-RPW <b>111.3</b> Chan 50	APCH CRS <b>111°</b>	Rwy ldg TDZE <b>9227</b> <b>336</b> Arpt Elev <b>336</b>	JAL-162 [USAF]	FRESNO YOSEMITE INTL (KFAT)
--	-------------------------	---	----------------	-----------------------------

MISSED APPROACH: Climb to 2000 via heading 110° and CZQ R-124 to SELMA 18.6 DME and hold.

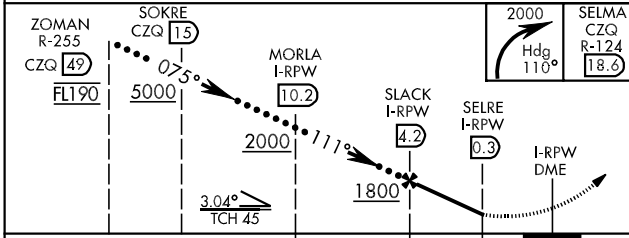
ATIS <b>121.35 273.6</b>	FRESNO APP CON <b>119.6 351.95</b>	FRESNO TOWER <b>118.2 251.1</b>	GND CON <b>121.7 348.6</b>	CLNC DEL <b>124.35 348.6</b>
-----------------------------	---------------------------------------	------------------------------------	-------------------------------	---------------------------------



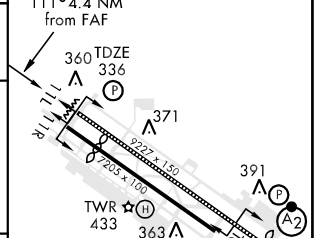
SW-2, 22 OCT 2009 to 19 NOV 2009

SW-2, 22 OCT 2009 to 19 NOV 2009

EMERG SAFE ALT 100 NM 16,700



ELEV 336	Rwy 11R ldg 5757'	Rwy 29R ldg 8915'
----------	-------------------	-------------------



CATEGORY	C	D	E
S-11L	680/50 344 (400-1)	680/60	344 (400-1½)
SIDE STEP RWY 11R	680-1½ 347 (400-1½)	680-2	347 (400-2)
CIRCLING	820-1½ 484 (500-1½)	920-2 584 (600-2)	1140-2¾ 804 (900-2¾)

REIL Rws 11L and 11R  
HIRL Rwy 11L-29R  
MIRL Rwy 11R-29L  
TDZL/CL Rwy 29R

FRESNO, CALIFORNIA  
Amdt 1 07354

36°47'N-119°43'W

FRESNO YOSEMITE INTL (KFAT)

# HI-LOC/DME RWY 11L