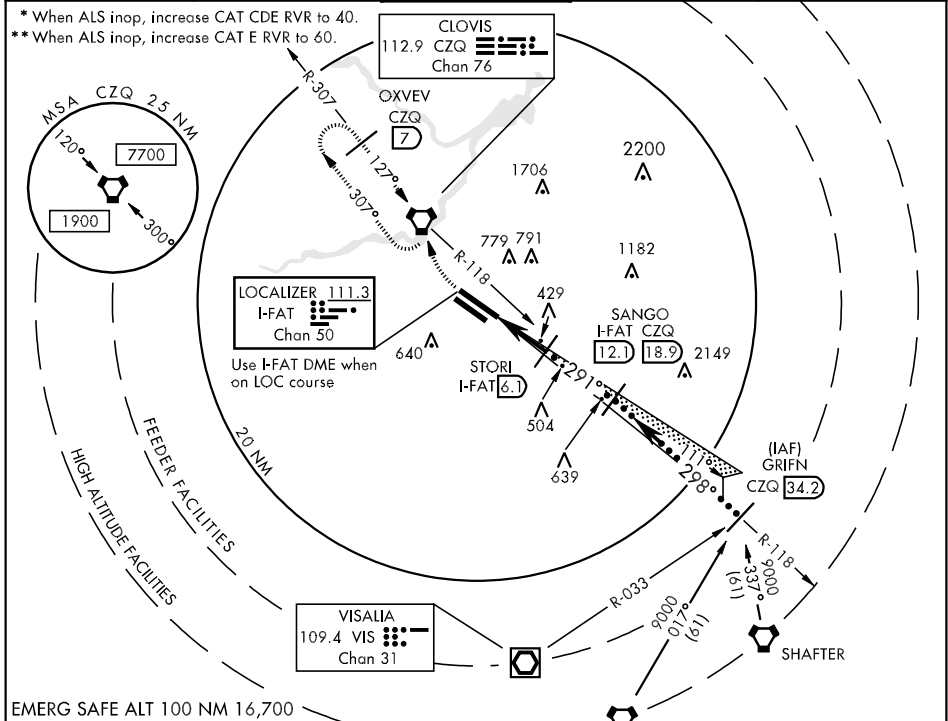


LOC/DME I-FAT 111.3 Chan 50	APCH CRS 291°	Rwy Idg TDZE Arpt Elev 8915 333 336	JAL-162 [USAF]	FRESNO YOSEMITE INTL (KFAT)
--	-------------------------	---	----------------	-----------------------------

ALSF-2 MISSED APPROACH: Climb to 800 then climbing right turn to 2000 direct CZQ VORTAC and hold. (TACAN aircraft continue climb to 3000 via CZQ R-307 to OXVEV/7 DME and hold northwest, right turns, 127° inbound.) or when directed by ATC, climb to 1800 via 290° heading for radar vectors.

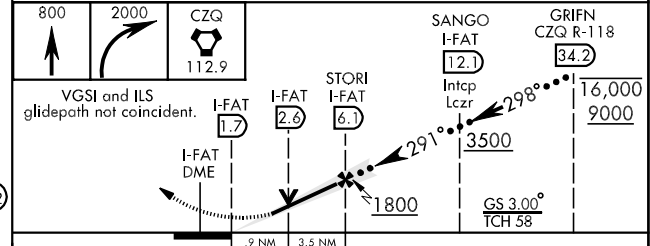
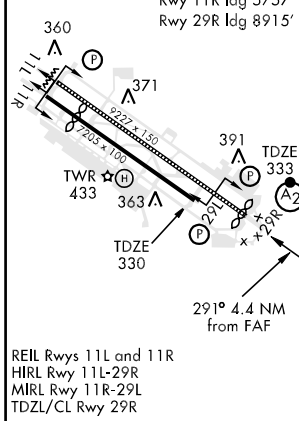
ATIS 121.35 273.6	FRESNO APP CON 132.35 323.25	FRESNO TOWER 118.2 251.1	GND CON 121.7 348.6	CLNC DEL 124.35 348.6
-----------------------------	--	------------------------------------	-------------------------------	---------------------------------

* When ALS inop, increase CAT CDE RVR to 40.
** When ALS inop, increase CAT E RVR to 60.



EMERG SAFE ALT 100 NM 16,700

ELEV 336	Rwy 11R Idg 5757'	Rwy 29R Idg 8915'
----------	-------------------	-------------------



CATEGORY	C	D	E
S-ILS 29R*	533/18 200	(200-¾)	533/24 200 (200-½)
S-LOC 29R**	680/24 347 (400-½)	680/40 347	(400-¾)
SIDE STEP RWY 29L	680-1½ 350 (400-½)	680-2 350	(400-2)
CIRCLING	820-1½ 484 (500-½)	920-2 584 (600-2)	1140-2¾ 804 (900-2¾)

SW-2, 22 OCT 2009 to 19 NOV 2009

SW-2, 22 OCT 2009 to 19 NOV 2009