

# COALDALE ONE DEPARTURE

SL-162 (FAA)

FRESNO YOSEMITE INTL (FAT)  
FRESNO, CALIFORNIA

ATIS 121.35 273.6  
CLNC DEL  
124.35 348.6  
GND CON  
121.7 348.6  
FRESNO TOWER  
118.2 251.1  
FRESNO DEP CON  
119.6 351.95

COALDALE  
117.7 OAL   
Chan 124  
N38°00.20'-W117°46.23'  
L-9, H-3

FRIANT  
115.6 FRA   
Chan 103

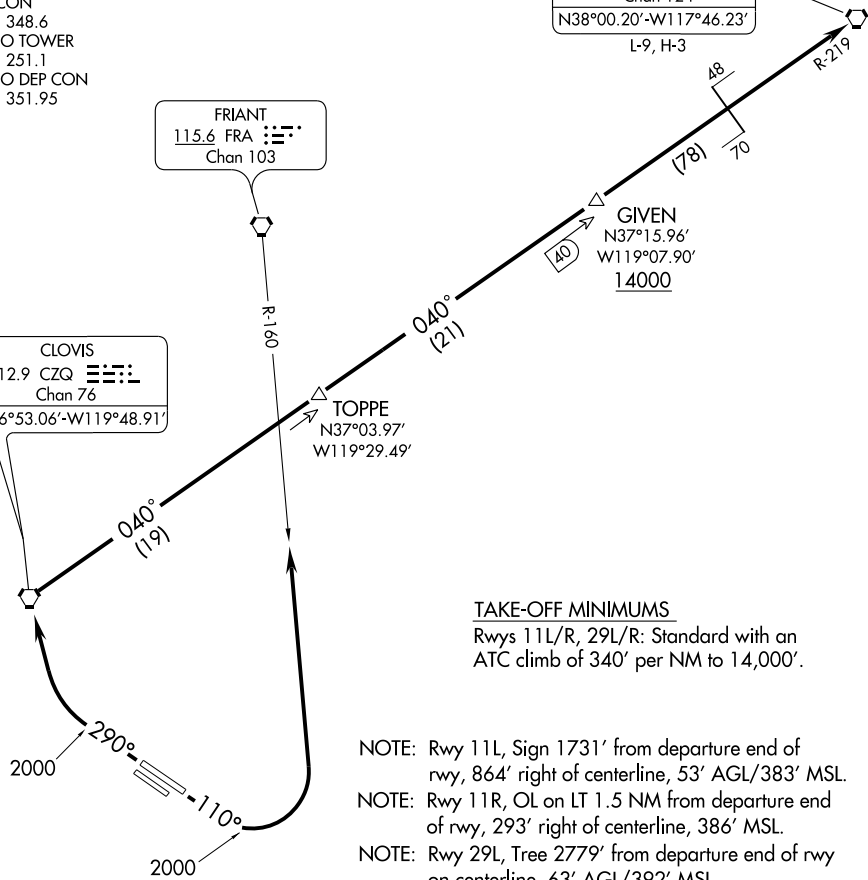
CLOVIS  
112.9 CZQ   
Chan 76  
N36°53.06'-W119°48.91'

TOPPE  
N37°03.97'  
W119°29.49'

GIVEN  
N37°15.96'  
W119°07.90'  
14000

SW-2, 22 OCT 2009 to 19 NOV 2009

SW-2, 22 OCT 2009 to 19 NOV 2009



TAKE-OFF MINIMUMS  
Rwys 11L/R, 29L/R: Standard with an ATC climb of 340' per NM to 14,000'.

- NOTE: Rwy 11L, Sign 1731' from departure end of rwy, 864' right of centerline, 53' AGL/383' MSL.
- NOTE: Rwy 11R, OL on LT 1.5 NM from departure end of rwy, 293' right of centerline, 386' MSL.
- NOTE: Rwy 29L, Tree 2779' from departure end of rwy on centerline, 63' AGL/392' MSL.
- NOTE: Rwy 29R, Trees 1298' from departure end of rwy, 775' right of centerline, 50' AGL/397' MSL.

NOTE: Chart not to scale.

## DEPARTURE ROUTE DESCRIPTION

TAKE-OFF RUNWAYS 11L/R: Climb via 110° heading to 2000', then climbing left turn via FRA R-160 and CZQ R-040. Thence . . . .

TAKE-OFF RUNWAYS 29L/R: Climb via 290° heading to 2000', then climbing right turn direct CZQ VORTAC. Thence . . . .

. . . . Intercept and proceed via CZQ R-040 and OAL R-219 to OAL VORTAC. Cross GIVEN DME at or above 14000'. Expect clearance to filed altitude after GIVEN DME.