

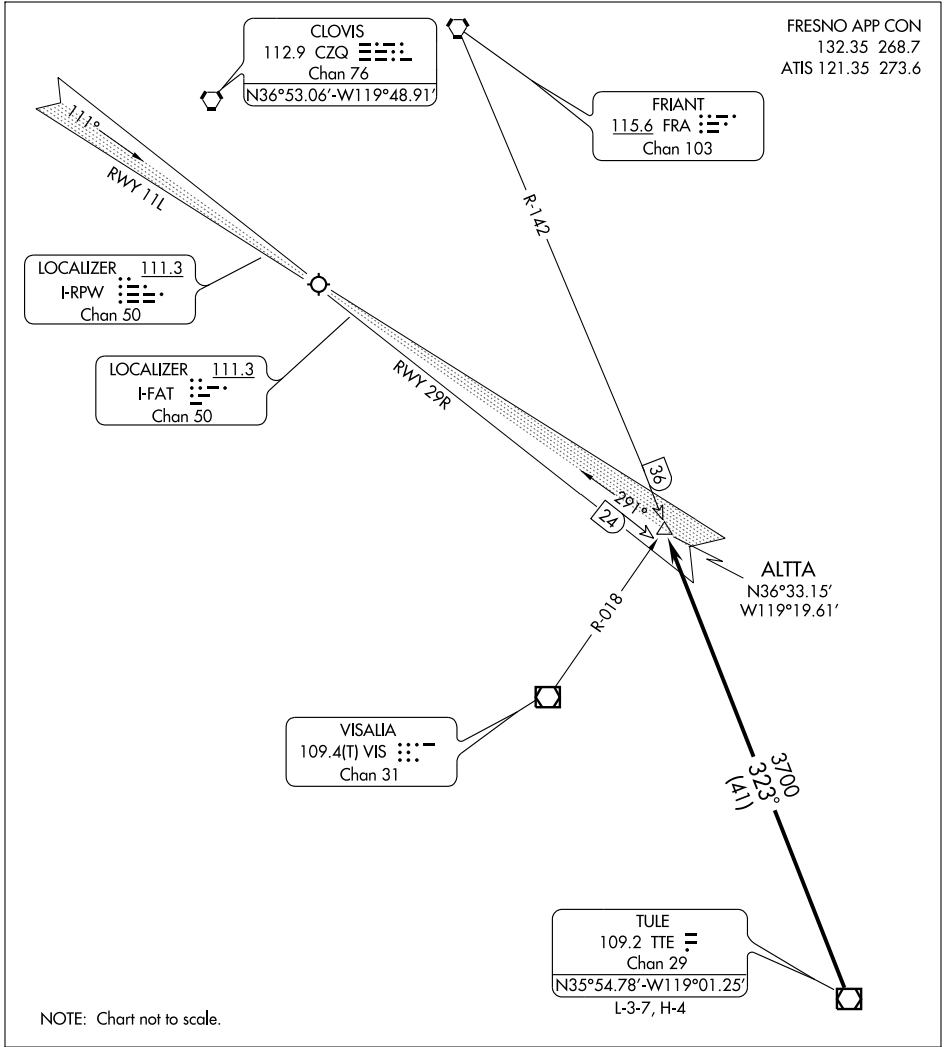
(TTE.ALTA8) 08101

ALTA EIGHT ARRIVAL

FRESNO YOSEMITE INTL
FRESNO, CALIFORNIA

ST-162 (FAA)

FRESNO APP CON
132.35 268.7
ATIS 121.35 273.6



NOTE: Chart not to scale.

From over TTE VOR/DME via TTE R-323 and FRA R-142 to ALTA DME fix. Expect ILS or LOC Rwy 29R approach. For Rwy 11L operations: Expect routing via CZQ VORTAC and radar vectors to Fresno Localizer Rwy 11L approach.

LOST COMMUNICATIONS: Rwy 11L: Execute VOR/DME or TACAN Rwy 11L approach.

ALTA EIGHT ARRIVAL

(TTE.ALTA8) 08101

FRESNO, CALIFORNIA
FRESNO YOSEMITE INTL

SW-2, 22 OCT 2009 to 19 NOV 2009

SW-2, 22 OCT 2009 to 19 NOV 2009