

GPS RWY 30

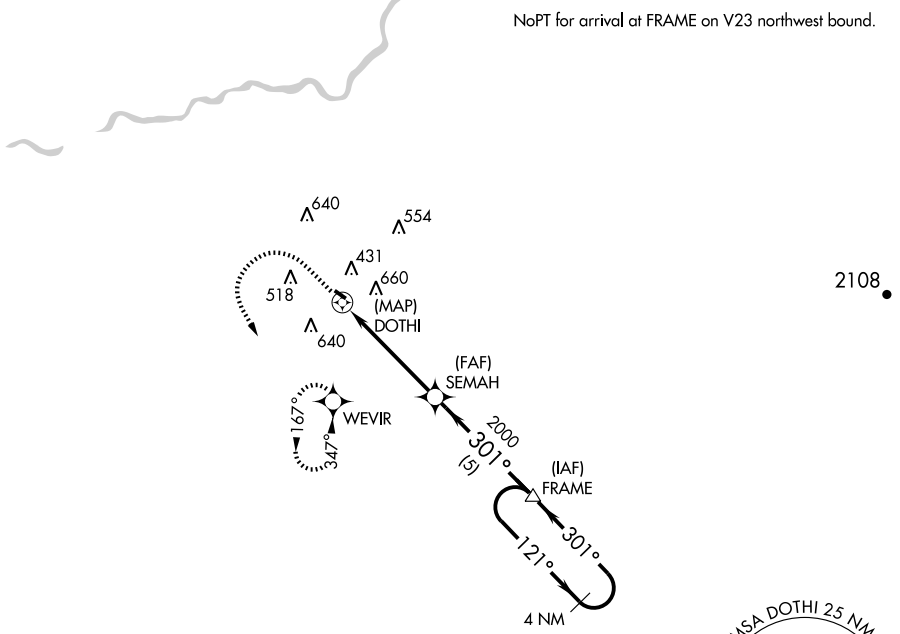
FRESNO CHANDLER EXECUTIVE (FCH)

APP CRS 301°	Rwy Idg 3090
	TDZE 279
	Apt Elev 280

<p>NA If local altimeter setting not received, use Fresno Yosemite Intl altimeter setting and increase all MDAs 20 feet.</p>	<p>MISSED APPROACH: Climb to 1000 then climbing left turn to 2000 direct WEVIR WP and hold.</p>
---	--

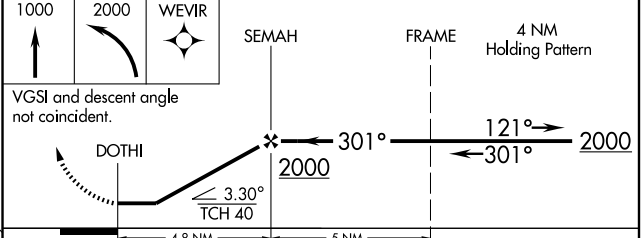
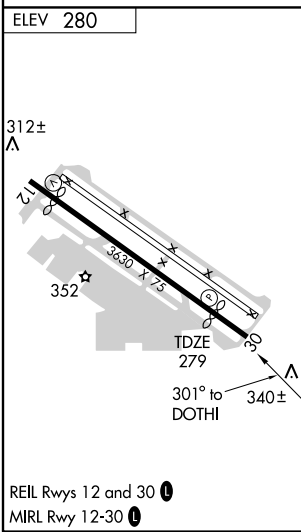
<p>AWOS-3 135.225</p>	<p>FRESNO APP CON 119.0 323.25</p>	<p>UNICOM 123.0 (CTAF) 0</p>
----------------------------------	---	---

NoPT for arrival at FRAME on V23 northwest bound.



SW-2, 22 OCT 2009 to 19 NOV 2009

SW-2, 22 OCT 2009 to 19 NOV 2009



CATEGORY	A	B	C	D
S-30	900-1	621 (700-1)	900-1 ³ / ₄ 621 (700-1 ³ / ₄)	NA
CIRCLING	1020-1	740 (800-1)	1020-2 740 (800-2)	NA