

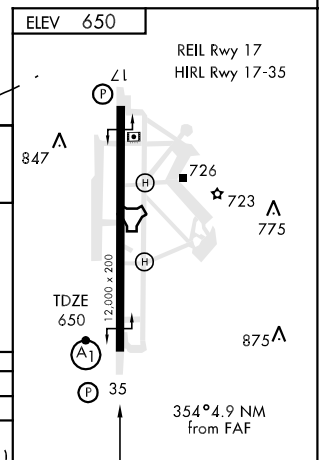
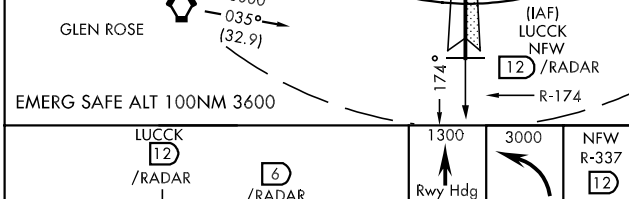
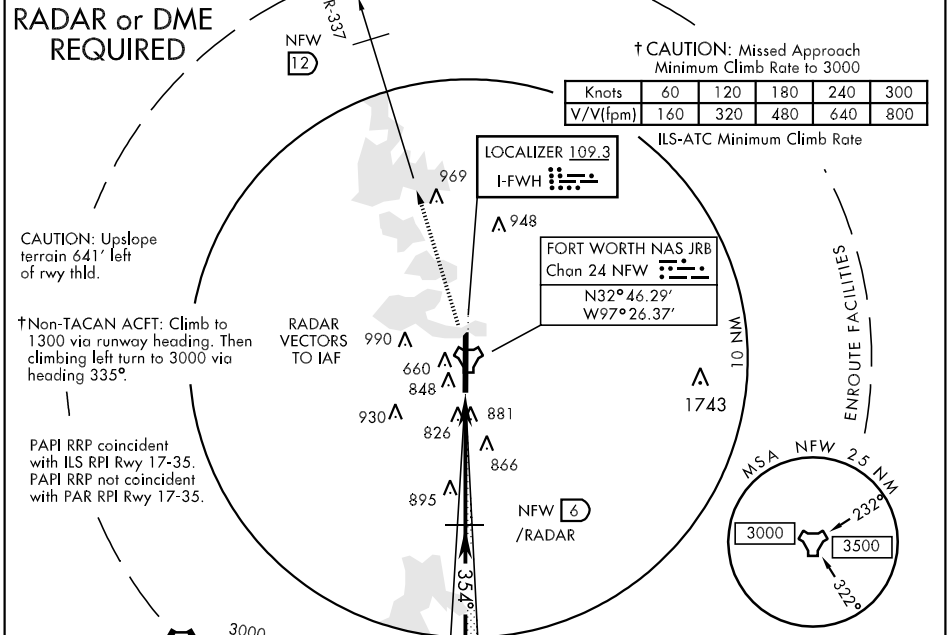
LOC I-FWH <b>109.3</b>	APCH CRS <b>354°</b>	Rwy Idg TDZE Arpt Elev <b>12,000</b> <b>650</b> <b>650</b>
---------------------------	-------------------------	---

AL-160 [USN] FORT WORTH NAS JRB (CARSWELL FLD) (NFW)

▼ **\*\*** When ALS inop, increase vis CAT CDE ¼ mile.  
**\*\*\*** When ALS inop, increase vis CAT AB ¼ mile, CAT CDE ½ mile.  
**\*\*\*** Circling not authorized E of Rwy 17-35.

ALSF-1 
 † MISSED APPROACH: Climb to 1300 via runway heading. Then climbing left turn to 3000, intercept the NFW R-337 to 12 DME.

ATIS ★ <b>273.675</b>	REGIONAL APP CON <b>125.8 257.95</b>	NAVY FORT WORTH TOWER ★ <b>120.95 269.325 284.725</b>	NAVY FORT WORTH GND CON <b>126.4 254.325 279.575</b>	ASR/PAR
--------------------------	---	--	---	---------



CATEGORY	A	B	C	D	E
S-ILS 35*	900-¾		250	(300-¾)	
S-LOC 35**	1140-¾	490	(500-¾)	1140-1	1140-1½
CIRCLING***	1220-1	570 (600-1)	1240-1½	1300-2	1300-2½
			590(600-1½)	650 (700-2)	650(700-2½)
S-PAR 35*	900-¾	250	(300-¾)	GS 3.00°	

LOC FAF to MAP 4.4 NM					
Knots	60	90	120	150	180
Min:Sec	4:24	2:56	2:12	1:46	1:28

FORT WORTH, TEXAS 32° 46'N-97° 26'W FORT WORTH NAS JRB (CARSWELL FLD)(NFW)

SC-2, 22 OCT 2009 to 19 NOV 2009

SC-2, 22 OCT 2009 to 19 NOV 2009