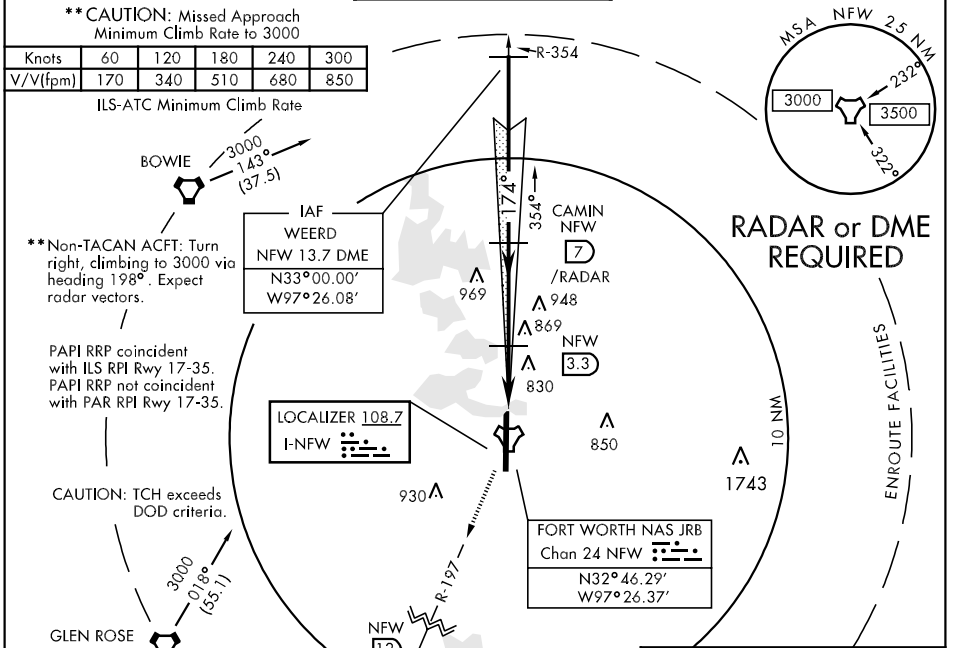


LOC I-NFW <b>108.7</b>	APCH CRS <b>174°</b>	Rwy Idg <b>12,000</b> TDZE <b>636</b> Arpt Elev <b>650</b>
---------------------------	-------------------------	--

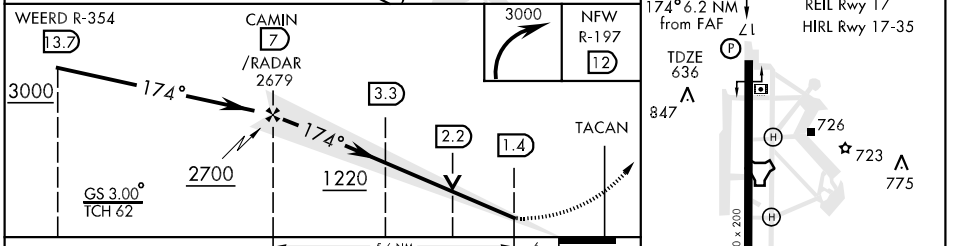
AL-160 [USN] FORT WORTH NAS JRB (CARSWELL FLD) (NFW)

**\*Circling not authorized E of Rwy 17-35.** **\*\* MISSED APPROACH: Turn right climbing 3000, out the NFW R-197 to 12 DME.**

ATIS ★ <b>273.575</b>	REGIONAL APP CON <b>125.8 257.95</b>	NAVY FORT WORTH TOWER ★ <b>120.95 269.325 284.725</b>	NAVY FORT WORTH GND CON <b>126.4 254.325 279.575</b>	ASR/PAR
--------------------------	---	--	---	---------



ELEV 650



CATEGORY	A	B	C	D	E
S-ILS 17	836-3/4	200	(200-3/4)		
S-LOC/DME 17	1080-1 444(500-1)	1080-1 1/4 444(500-1 1/4)	1080-1 1/2 444(500-1 1/2)		
S-LOC 17	1220-1 584 (600-1)	1220-1 1/2 584(600-1 1/2)	1220-1 3/4 584(600-1 3/4)	1220-2 584 (600-2)	
CIRCLING *	1220-1 570 (600-1)	1240-1 1/2 590(600-1 1/2)	1300-2 650 (700-2)	1300-2 1/2 650(700-2 1/2)	
S-PAR 17	836-3/4	200	(200-3/4)	GS 3.0°	

LOC FAF to MAP 5.6 NM					
Knots	60	90	120	150	180
Min:Sec	5:35	3:43	2:47	2:14	1:51

FORT WORTH, TEXAS 32° 46'N-97° 26'W FORT WORTH NAS JRB (CARSWELL FLD)(NFW)

SC-2, 22 OCT 2009 to 19 NOV 2009

SC-2, 22 OCT 2009 to 19 NOV 2009