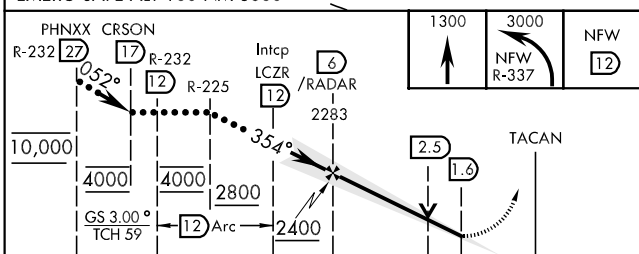
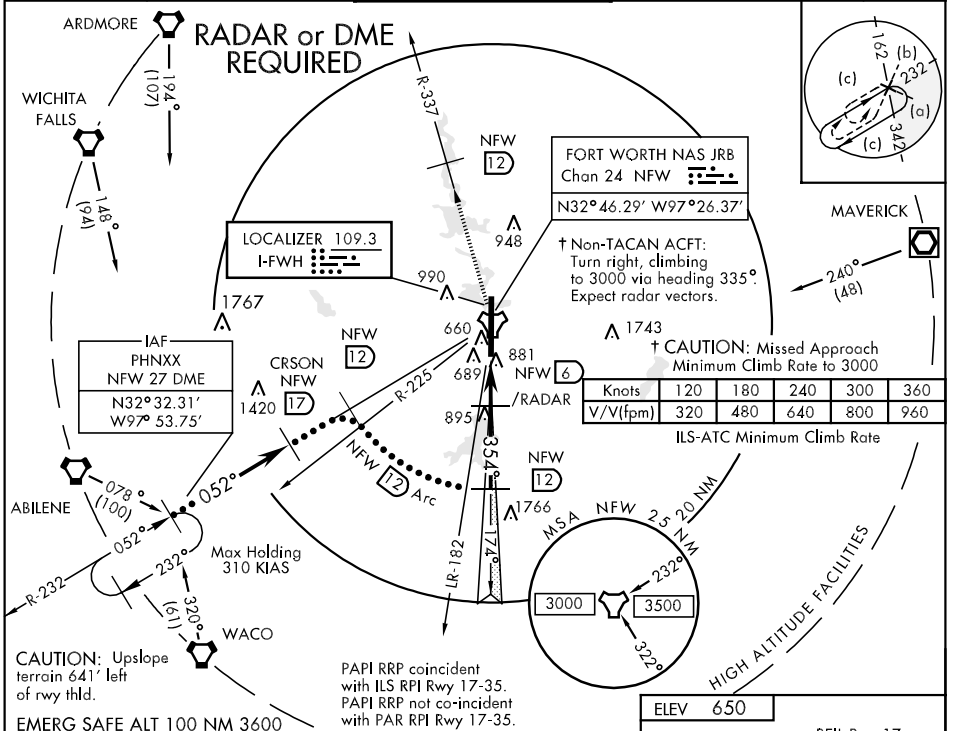


LOC I-FWH <b>109.3</b>	APCH CRS <b>354°</b>	Rwy Idg <b>12,000</b> TDZE <b>650</b> Arpt Elev <b>650</b>	JAL-160 [USN]	FORT WORTH NAS JRB (CARSWELL FLD) (NFW)
---------------------------	-------------------------	--	---------------	---

\*When ALS inop, increase vis 1/4 mile.  
 \*\*When ALS inop, increase vis 1/2 mile.  
 \*\*\*Circling not authorized E of Rwy 17-35.

ALSF-1 MISSED APPROACH: Climb to 1300 via runway heading. Then turn left climbing to 3000, intercept the NFW R-337 to 12 DME.

ATIS ★ <b>273.675</b>	REGIONAL APP CON <b>125.8 257.95</b>	NAVY FORT WORTH TOWER ★ <b>120.95 269.325 284.725</b>	NAVY FORT WORTH GND CON <b>126.4 254.325 279.575</b>	ASR/PAR
--------------------------	---	--	---	---------



CATEGORY	C	D	E
S-ILS 35*	900-3/4	250 (300-3/4)	
S-LOC 35**	1140-3/4 490 (500-3/4)	1140-1 490 (500-1)	1140-1 1/4 490 (500-1 1/4)
CIRCLING***	1240-1 1/2 590 (600-1 1/2)	1300-2 650 (700-2)	1300-2 1/4 650 (700-2 1/4)
S-PAR 35*	900-3/4	250 (300-3/4)	GS 3.00°

FAF to MAP 4.4 NM					
Knots	120	140	160	180	200
Min:Sec	2:12	1:53	1:39	1:28	1:19

SC-2, 22 OCT 2009 to 19 NOV 2009

SC-2, 22 OCT 2009 to 19 NOV 2009