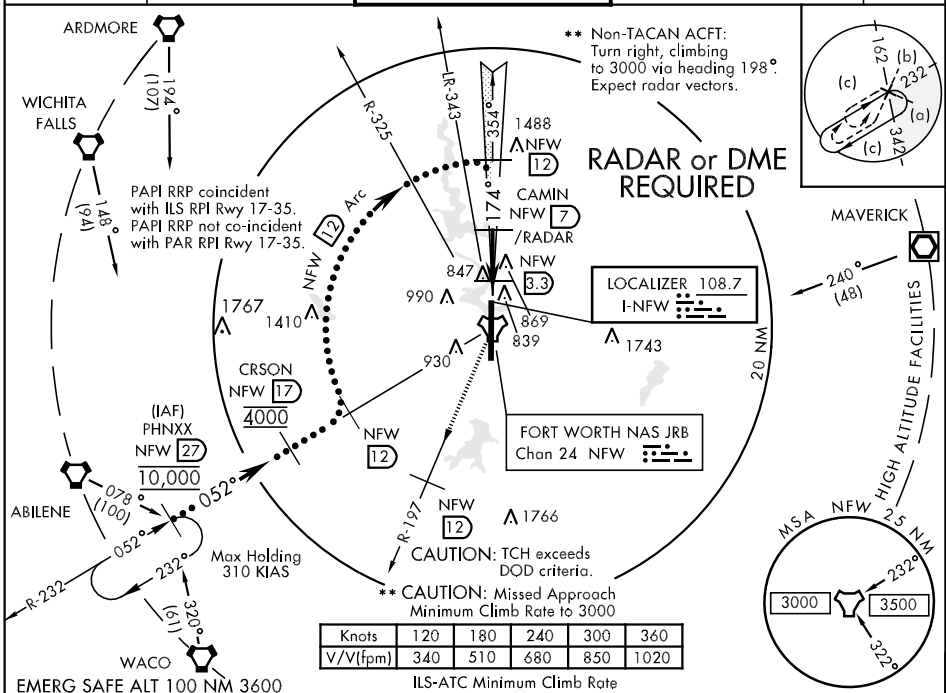


LOC I-NFW 108.7	APCH CRS 174°	Rwy Idg TDZE Arpt Elev 12,000 636 650	JAL-160 [USN]	FORT WORTH NAS JRB (CARSWELL FLD) (NFW)
---------------------------	-------------------------	---	---------------	---

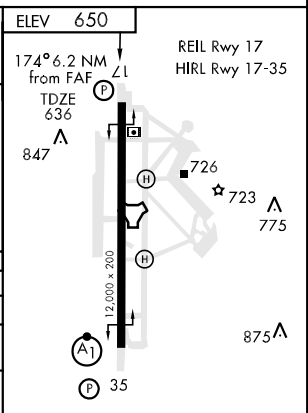
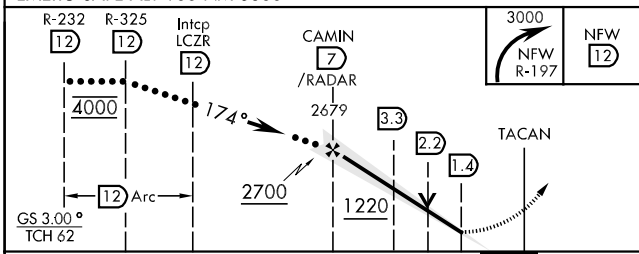
* Circling not authorized E of Rwy 17-35. ** MISSED APPROACH: Turn right climbing to 3000 via NFW R-197 to 12 DME.

ATIS ★ 273.575	REGIONAL APP CON 125.8 257.95	NAVY FORT WORTH TOWER ★ 120.95 269.325 284.725	NAVY FORT WORTH GND CON 126.4 254.325 279.575	ASR/PAR
--------------------------	---	--	---	---------



SC-2, 22 OCT 2009 to 19 NOV 2009

SC-2, 22 OCT 2009 to 19 NOV 2009



CATEGORY	C	D	E
S-ILS 17	836-3/4	200 (200-3/4)	
S-LOC/DME 17	1080-1 1/4 444 (500-1 1/4)	1080-1 1/2 444	(500-1 1/2)
S-LOC 17	1220-1 1/2 584 (600-1 1/2)	1220-1 1/4 584 (600-1 1/4)	1220-2 584 (600-2)
CIRCLING*	1240-1 1/2 590 (600-1 1/2)	1300-2 650 (700-2)	1300-2 1/4 650 (700-2 1/4)
S-PAR 17	836-3/4	200 (200-3/4)	GS 3.00°

FAF to MAP 5.6 NM					
Knots	120	140	160	180	200
Min:Sec	2:48	2:24	2:06	1:52	1:41