

# RNAV (GPS) RWY 16

FORT WORTH MEACHAM INTL (FTW)

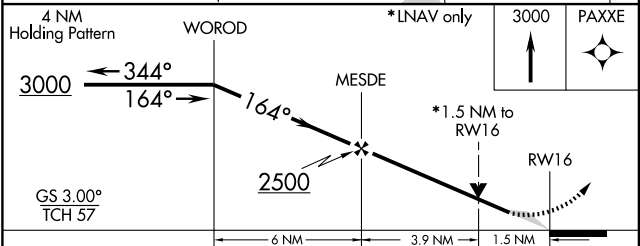
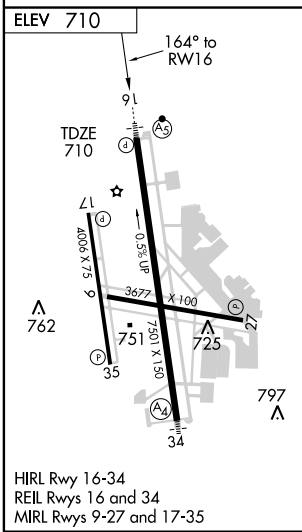
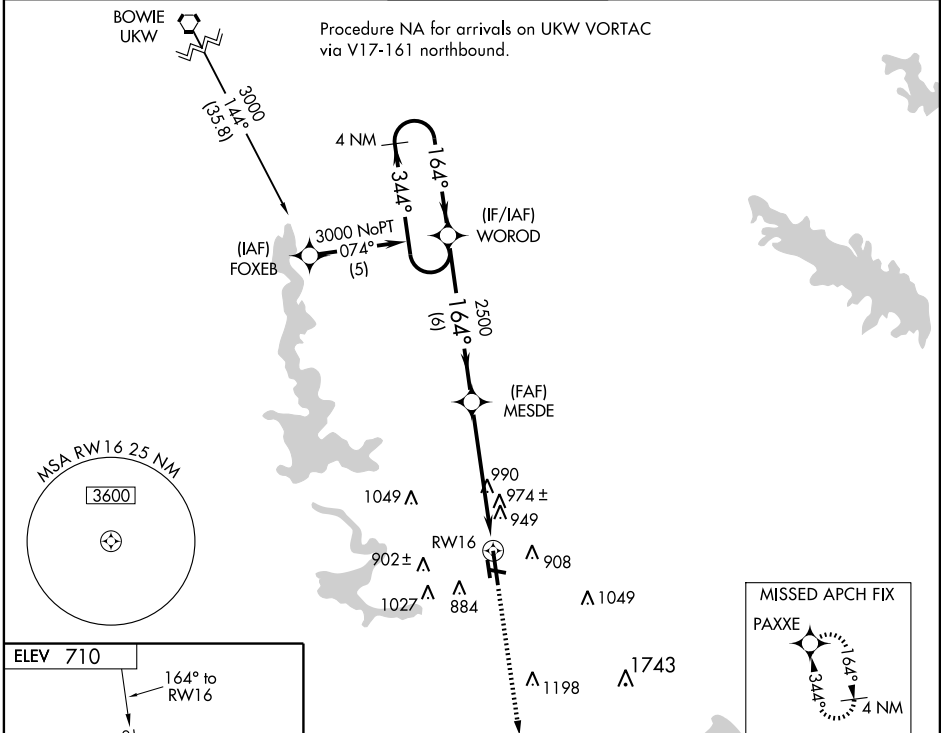
WAAS CH <b>42612</b> <b>W16A</b>	APP CRS <b>164°</b>	Rwy ldg <b>7501</b> TDZE <b>710</b> Apt Elev <b>710</b>
--	------------------------	---

**⚠** Circling to RW17 NA at night. For uncompensated Baro-VNAV systems, LNAV/VNAV NA below -16°C (4°F) or above 47°C (116°F). DME/DME RNP-0.3 NA.

**MALSR** 

**MISSED APPROACH:** Climb to 3000 direct PAXXE and hold.

ATIS <b>120.7</b>	REGIONAL APP CON (North) <b>118.1 306.95</b> (South) <b>135.975 379.9</b>	MEACHAM TOWER <b>118.3 257.8</b>	GND CON <b>121.9</b>	CLNC DEL <b>124.65</b>
----------------------	---	-------------------------------------	-------------------------	---------------------------



CATEGORY	A	B	C	D
LPV DA		910/24	200 (200-1/2)	
LNAV/VNAV DA		1284-1 1/2	574 (600-1 1/2)	
LNAV MDA	1240/24	530 (600-1/2)	1240/50 530 (600-1)	1240/60 530 (600-1 1/4)
CIRCLING	1260-1	550 (600-1)	1280-1 1/2 570 (600-1 1/2)	1300-2 590 (600-2)

SC-2, 22 OCT 2009 to 19 NOV 2009

SC-2, 22 OCT 2009 to 19 NOV 2009