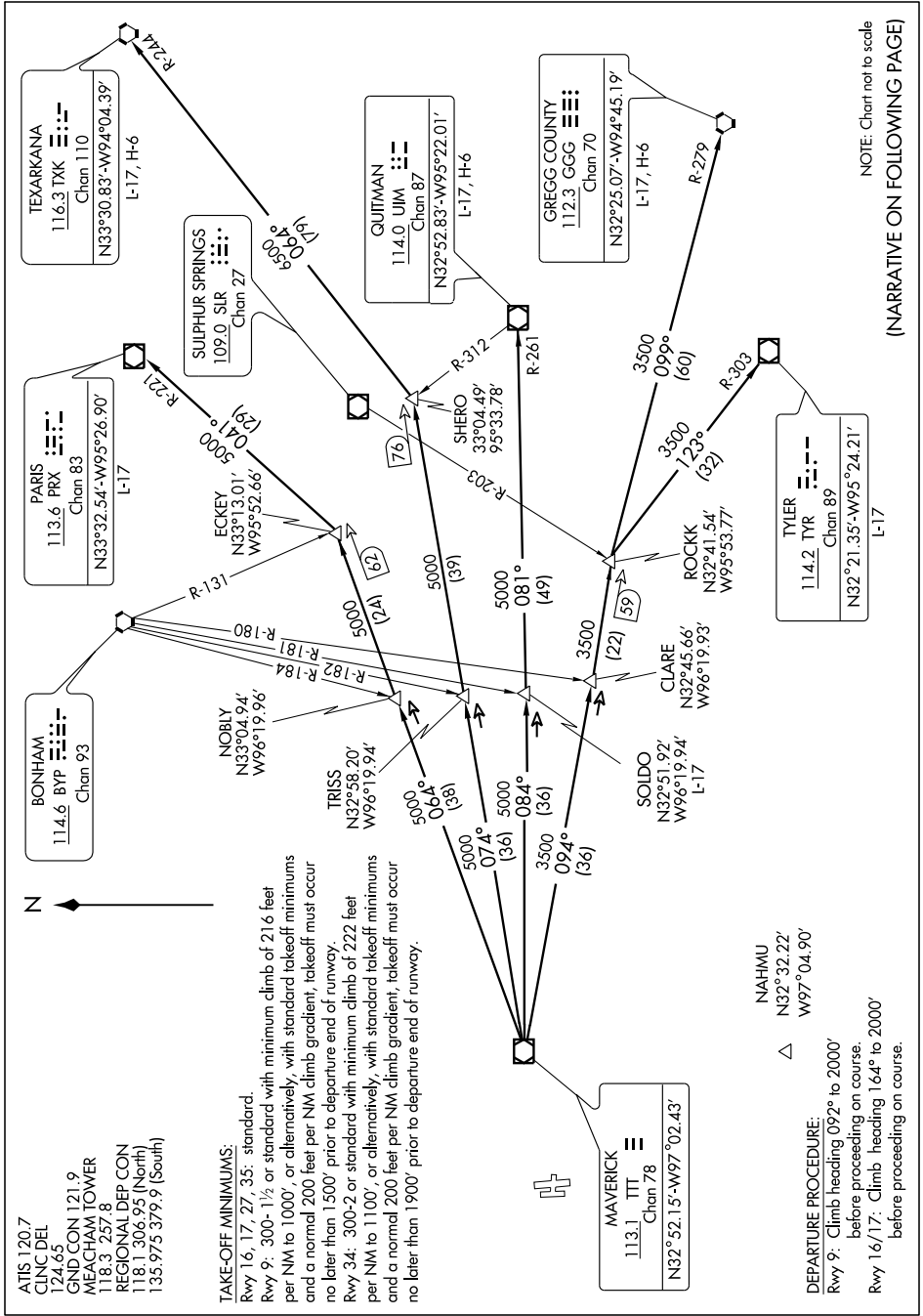


HUBBARD SIX DEPARTURE

SL-159 (FAA)

FORT WORTH, TEXAS

SC-2, 22 OCT 2009 to 19 NOV 2009



NOTE: Chart not to scale
(NARRATIVE ON FOLLOWING PAGE)

SC-2, 22 OCT 2009 to 19 NOV 2009

HUBBARD SIX DEPARTURE

FORT WORTH, TEXAS

ATIS 120.7
 CINC DEL 124.65
 GND CON 121.9
 MEACHAM TOWER 118.3 257.8
 REGIONAL DEP CON 118.1 306.95 (North)
 135.975 379.9 (South)

TAKE-OFF MINIMUMS:

Rwy 16, 17, 27, 35: standard.
 Rwy 9: 300-1½ or standard with minimum climb of 216 feet per NM to 1000', or alternatively, with standard takeoff minimums and a normal 200 feet per NM climb gradient, takeoff must occur no later than 1500' prior to departure end of runway.
 Rwy 34: 300-2 or standard with minimum climb of 222 feet per NM to 1100', or alternatively, with standard takeoff minimums and a normal 200 feet per NM climb gradient, takeoff must occur no later than 1900' prior to departure end of runway.

NAHMU
 N32°32.22'
 W97°04.90'

DEPARTURE PROCEDURE:

Rwy 9: Climb heading 092° to 2000' before proceeding on course.
 Rwy 16/17: Climb heading 164° to 2000' before proceeding on course.