

# VOR RWY 13

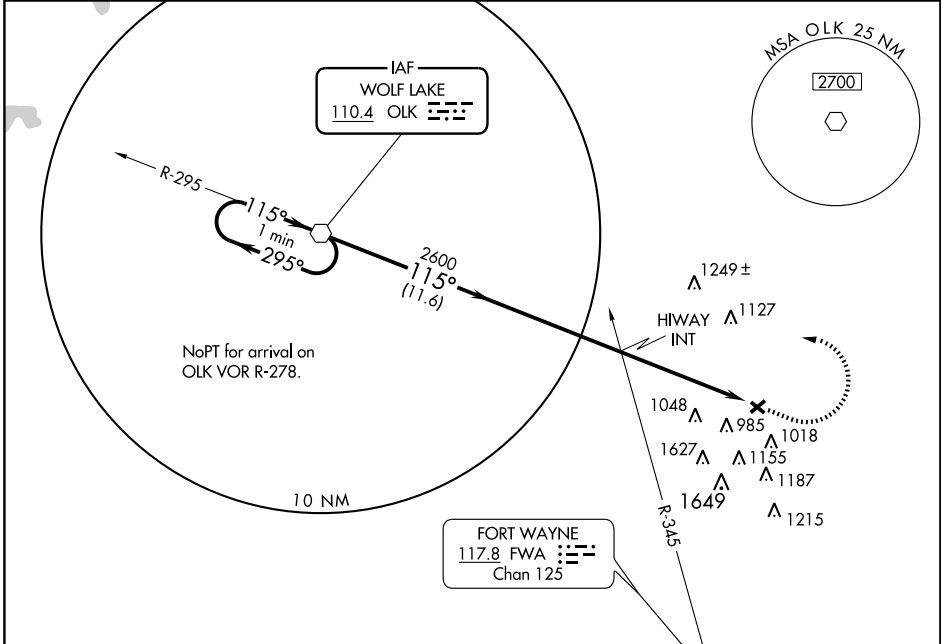
FORT WAYNE/ SMITH FIELD (SMD)

VOR OLK <b>110.4</b>	APP CRS <b>115°</b>	Rwy Idg TDZE Apt Elev	<b>2203</b> <b>834</b> <b>834</b>
-------------------------	------------------------	-----------------------------	---

▼ Straight-in minimums not authorized at night. When local altimeter setting not received, use Fort Wayne Intl altimeter setting and increase all MDA 40 feet and Circling Cat C visibility ¼ mile.

▲ MISSED APPROACH: Climb to 1900, then climbing left turn to 2600 direct OLK VOR and hold.

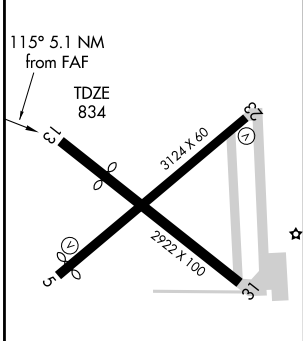
AWOS-3 <b>124.55</b>	FORT WAYNE APP CON <b>127.2 284.6</b>	UNICOM <b>122.8</b> (CTAF)
-------------------------	--	-------------------------------



EC-2, 22 OCT 2009 to 19 NOV 2009

EC-2, 22 OCT 2009 to 19 NOV 2009

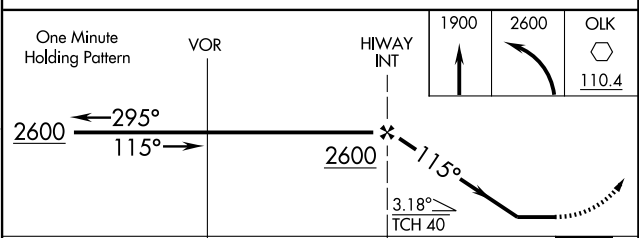
ELEV 834	Rwy 13 ldg 2203'
	Rwy 5 ldg 2925'



LIRL Rwy 5-23

FAF to MAP 5.1 NM

Knots	60	90	120	150	180
Min:Sec	5:06	3:24	2:33	2:02	1:42



CATEGORY	A		B		C		D
	1360-1	526 (600-1)	1360-1½	526 (600-1½)	1360-1½	526 (600-1½)	NA
S-13	1360-1	526 (600-1)	1360-1½	526 (600-1½)	1400-1½	566 (600-1½)	NA
CIRCLING	1400-1	566 (600-1)	1400-1½	566 (600-1½)	1400-1½	566 (600-1½)	NA