


VOR or TACAN RWY 5

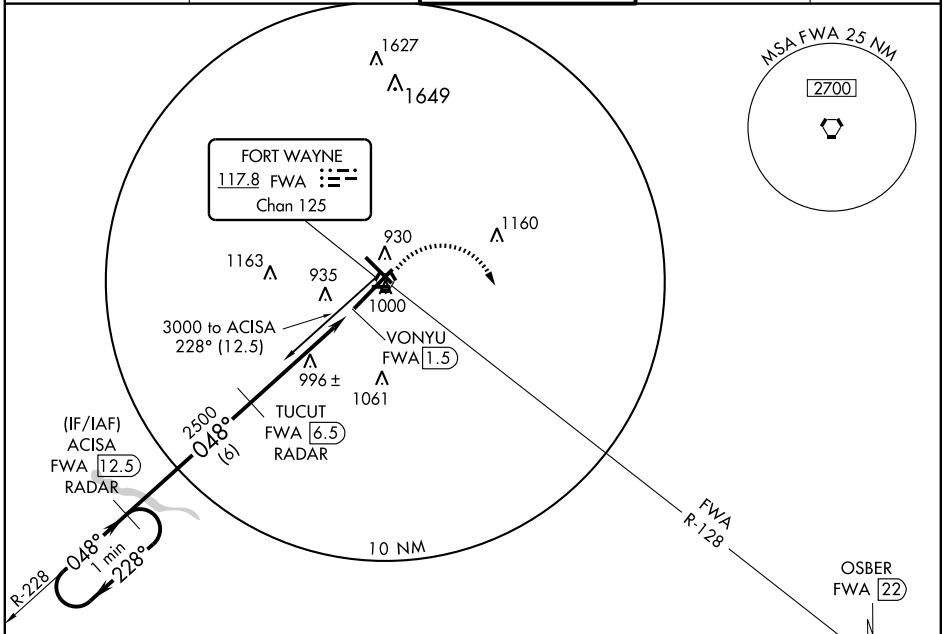
FORT WAYNE INTL (FWA)

VORTAC FWA 117.8 Chan 125	APP CRS 048°	Rwy Idg 11981 TDZE 814 Apt Elev 814
---	------------------------	--

ALSIF-2
 For Inoperative ALSIF-2, increase S-5 Cat E visibility 1/2 mile.
ASR DME or RADAR Required.

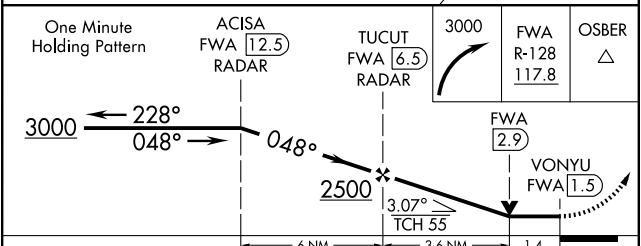
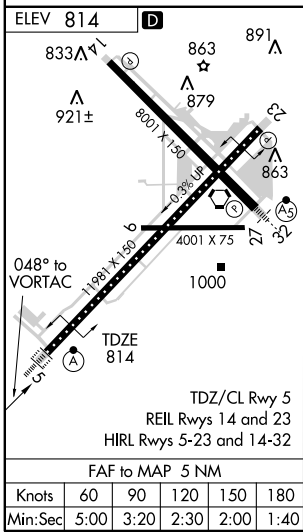
MISSED APPROACH: Climbing right turn to 3000 via FWA VORTAC R-128 to OSBER INT/FWA 22 DME and hold.

ATIS 121.25 349.0	FORT WAYNE APP CON 127.2 284.6	FORT WAYNE TOWER 119.1 272.725	GND CON 121.9 348.6	CLNC DEL 124.75
-----------------------------	--	--	-------------------------------	---------------------------



EC-2, 22 OCT 2009 to 19 NOV 2009

EC-2, 22 OCT 2009 to 19 NOV 2009



CATEGORY	A	B	C	D	E
S-5	1320/24	506 (600-1/2)	1320/50	506 (600-1)	1320/60 506 (600-1 1/4)
CIRCLING	1320-1	506 (600-1)	1320-1 1/2 506 (600-1 1/2)	1380-2 566 (600-2)	1520-2 1/2 706 (800-2 1/2)