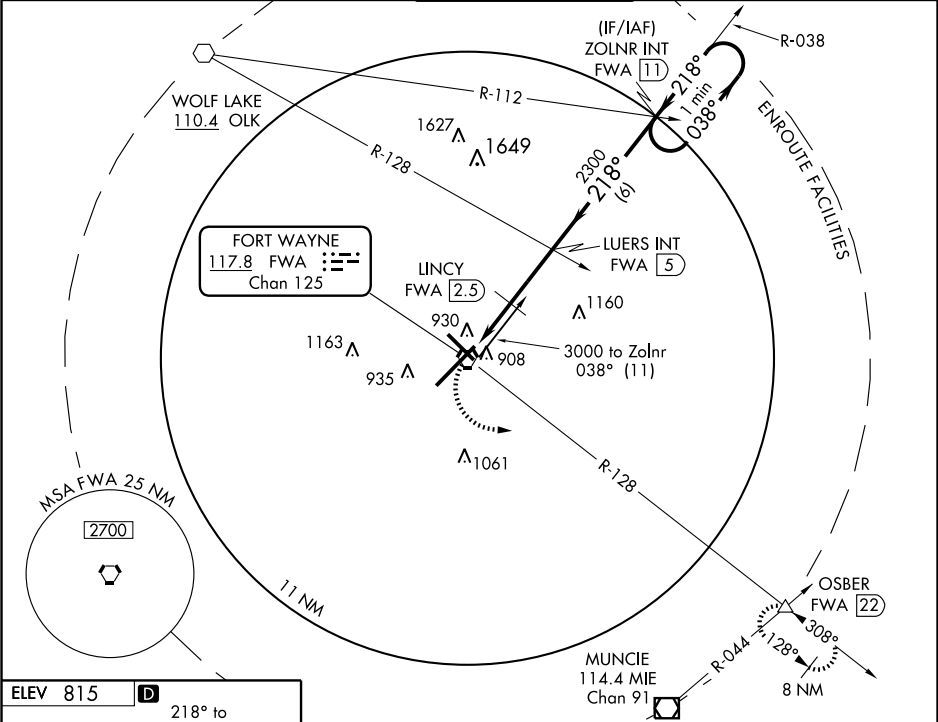


VOR or TACAN RWY 23

FORT WAYNE INTL (F'WA)

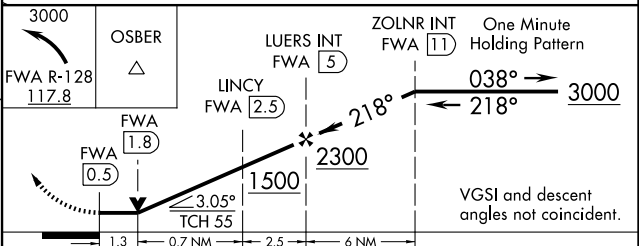
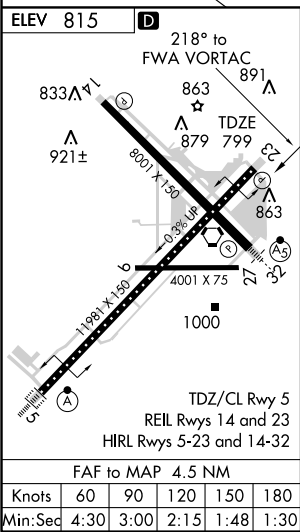
VORTAC FWA 117.8 Chan 125	APP CRS 218°	Rwy Idg TDZE Apt Elev	11981 799 815
--	------------------------	-----------------------------	--

ASR		MISSED APPROACH: Climbing left turn to 3000 via FWA R-128 to OSBER Int/22 DME and hold.		
ATIS 121.25 349.0	FORT WAYNE APP CON 127.2 284.6	FORT WAYNE TOWER 119.1 272.725	GND CON 121.9 348.6	CLNC DEL 124.75



EC-2, 22 OCT 2009 to 19 NOV 2009

EC-2, 22 OCT 2009 to 19 NOV 2009



CATEGORY	A	B	C	D	E
S-23	1500-1 701 (700-1)		1500-2 701 (700-2)	1500-2¼ 701 (700-2¼)	1500-2½ 701 (700-2½)
CIRCLING	1500-1 685 (700-1)		1500-2 685 (700-2)	1500-2¼ 685 (700-2¼)	1500-2½ 705 (800-2½)
LYNCY FIX MINIMUMS					
S-23	1300-1 501 (500-1)		1300-1½ 501 (500-1½)		1300-1¾ 501 (500-1¾)
CIRCLING	1320-1 505 (600-1)		1320-1½ 505 (600-1½)	1380-2 565 (600-2)	1520-2½ 705 (800-2½)