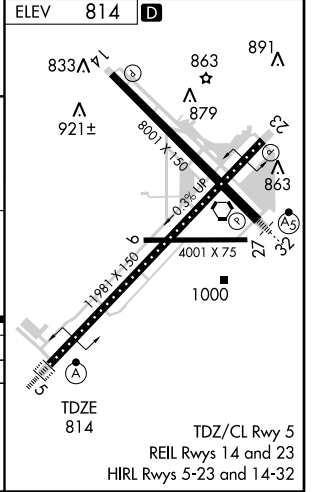
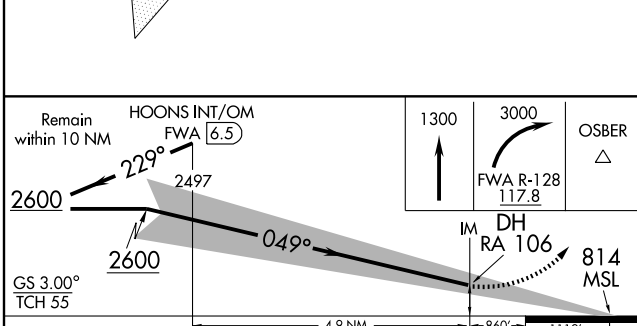
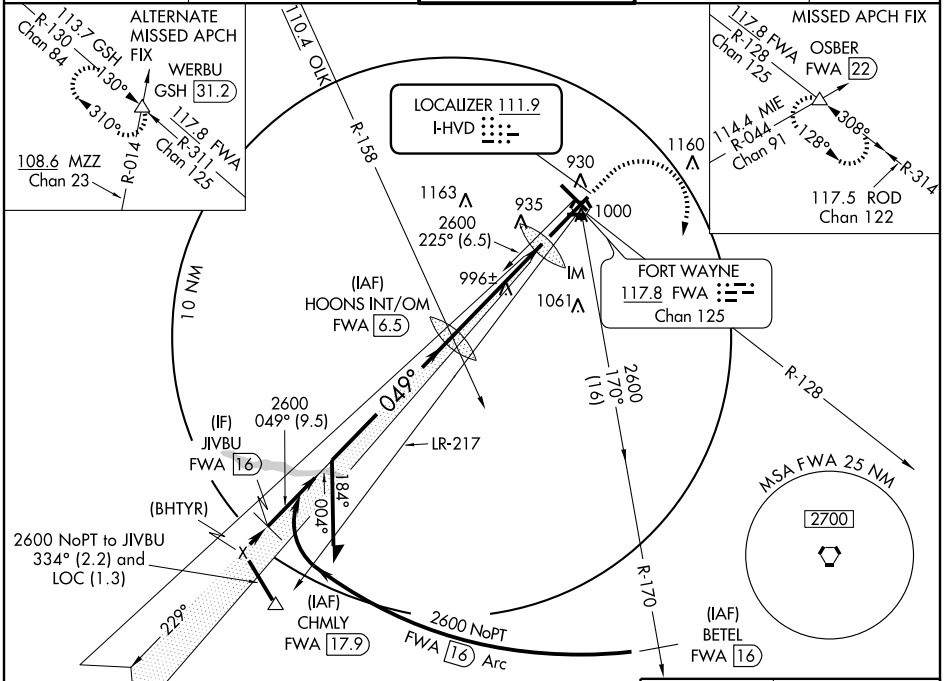


**ILS RWY 5 (CAT II)**  
FORT WAYNE INTL (FWA)

LOC I-HVD <b>111.9</b>	APP CRS <b>049°</b>	Rwy Idg TDZE Apt Elev	<b>11981</b> <b>814</b> <b>814</b>
---------------------------	------------------------	-----------------------------	--

		MISSED APPROACH: Climb to 1300 then climbing right turn to 3000 via FWA R-128 to OSBER INT/FWA 22 DME and hold.

ATIS <b>121.25 349.0</b>	FORT WAYNE APP CON <b>127.2 284.6</b>	FORT WAYNE TOWER <b>119.1 272.725</b>	GND CON <b>121.9 348.6</b>	CLNC DEL <b>124.75</b>
-----------------------------	--	--	-------------------------------	---------------------------



CATEGORY	A	B	C	D
S-ILS 5		914/12	100 RA 106	

**CATEGORY II ILS - SPECIAL AIRCREW & AIRCRAFT CERTIFICATION REQUIRED**

EC-2, 22 OCT 2009 to 19 NOV 2009

EC-2, 22 OCT 2009 to 19 NOV 2009