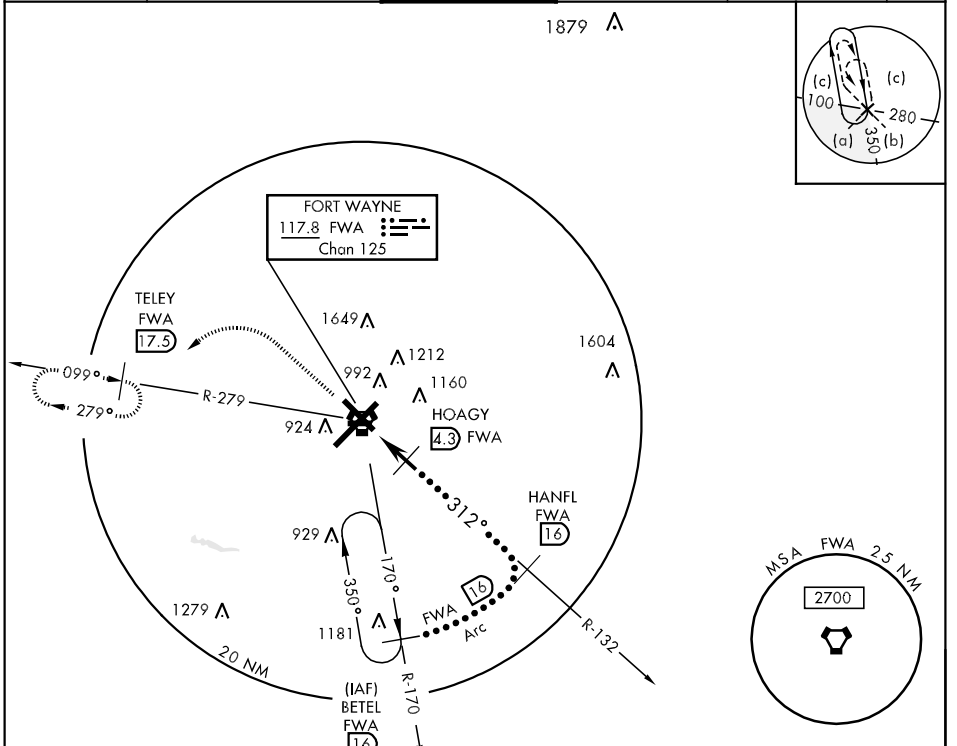


VORTAC FWA <b>117.8</b> Chan <b>125</b>	APCH CRS <b>312°</b>	Rwy Idg TDZE <b>8001</b> <b>800</b> Arpt Elev <b>814</b>	JAL-156 [USAF]	FORT WAYNE INTL (KFWA)
---	-------------------------	---	----------------	------------------------

▼ \* When ALS is inop, increase CAT C RVR to 60, vis to 1½ miles, CAT DE vis to 1½ miles.

MALSR MISSED APPROACH: Climb to 3000, then left turn via FWA R-279 to TELEY INT (FWA 17.5 DME) and hold.

ATIS <b>121.25 349.0</b>	FORT WAYNE APP CON <b>127.2 284.6</b>	FORT WAYNE TOWER <b>119.1 272.725</b>	GND CON <b>121.9 348.6</b>	CLNC DEL <b>124.75</b>	ASR
-----------------------------	--	--	-------------------------------	---------------------------	-----



ELEV 814

EMERG SAFE ALT 100 NM 3100

3000  $\uparrow$  FWA R-279

TELEY FWA 17.5

VGSI and descent angle not coincident.

HANFL R-132 16

BETEL R-170 16

HOAGY 4.3

8000

2400

2200

312°

3.14° TCH 55

4.1 NM

VORTAC

833  $\Delta$ , 863  $\Delta$ , 891  $\Delta$ , 852  $\Delta$ , 921  $\Delta$ , 879  $\Delta$ , 903  $\Delta$ , 863  $\Delta$ , 821  $\Delta$

8001 x 150

4001 x 75

11991 x 150

TDZE 800

312° to FWA VORTAC

CATEGORY	C	D	E
S-32 *	1260/40 460 (500-34)	1260/50	460 (500-1)
CIRCLING	1300-1½ 486 (500-1½)	1380-2 566 (600-2)	1520-2½ 706 (800-2½)

TDZ/CL Rwy 5  
REIL Rwy 14 and 23  
HIRL Rwy 5-23 and 14-32

EC-2, 22 OCT 2009 to 19 NOV 2009

EC-2, 22 OCT 2009 to 19 NOV 2009